

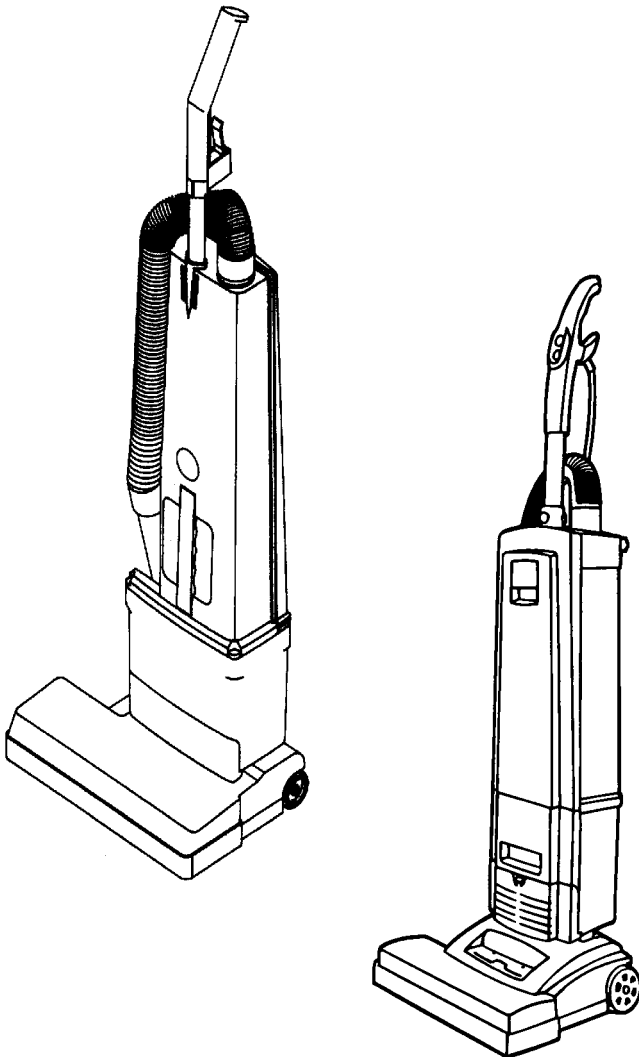
FLOOR EQUIPMENT PARTS.COM

SECTION CONTENTS

<u>MODEL No.</u>	<u>PAGE No.</u>
RY5500	6-2 THRU 6-9
RY6900	6-10 THRU 6-12

[MODEL No.](#)

RY5500
RY6900

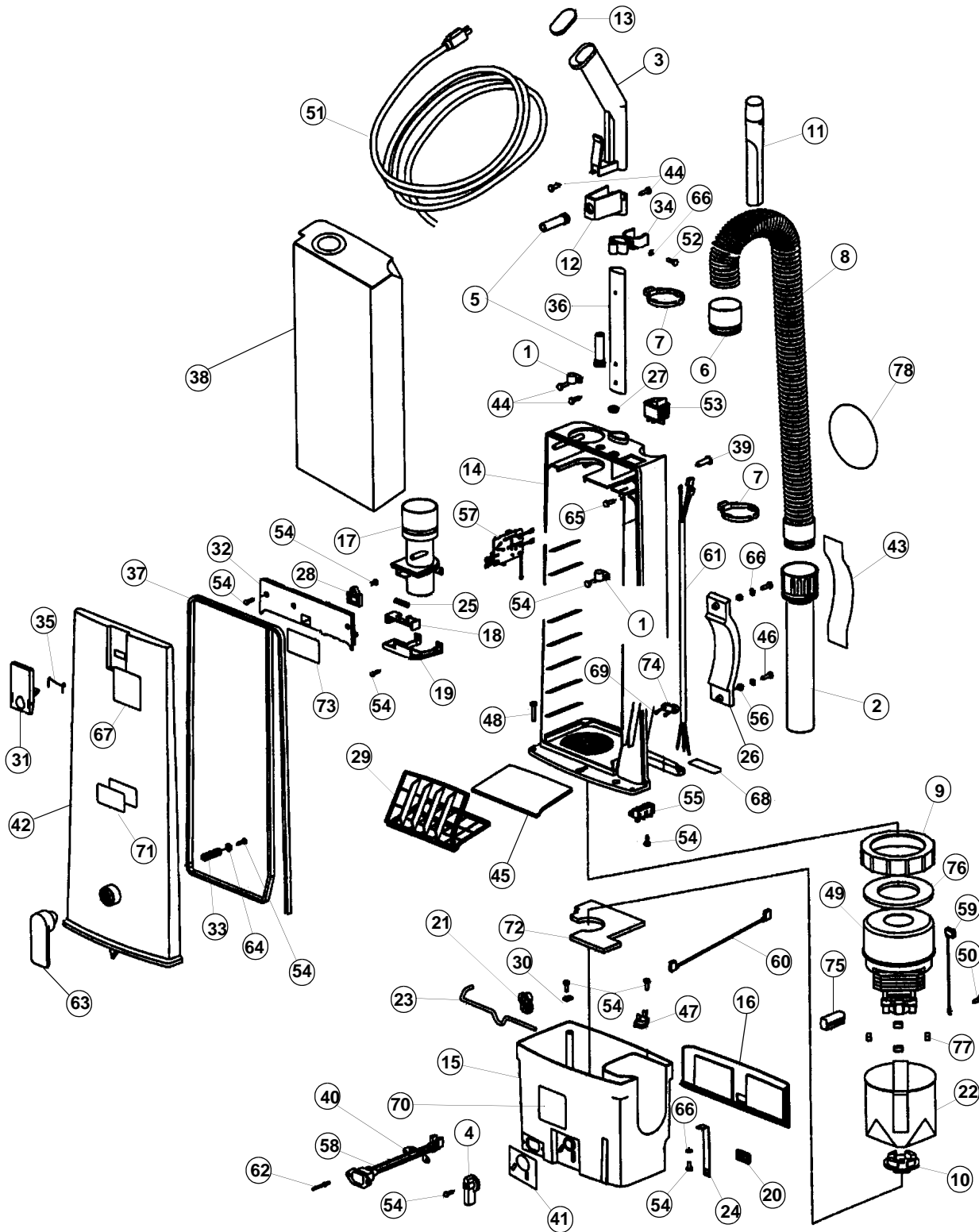


- * PRICING, SPECIFICATION'S, AND PRODUCT AVAILABILITY ARE SUBJECT TO CHANGE WITHOUT NOTICE. PRICING IS FOB FACTORY, GLENWILLOW, OH
- * ALL INFORMATION CONTAINED WITHIN THIS SERVICE MANUAL IS PROPRIETARY INFORMATION OF TTI FLOOR CARE NORTH AMERICA.
- * **WARNING:** TO REDUCE THE RISK OF ELECTRICAL SHOCK OR INJURY, ALWAYS DISCONNECT THE APPLIANCE CORD FROM THE ELECTRICAL OUTLET OR REMOVE BATTERY PRIOR TO SERVICING THE UNIT.

ASSEMBLY SCHEMATIC

MODEL NO.

RY5500



PART LISTING / PRICE LIST

****THE PARTS LIST FOR THIS UNIT ARE CONSIDERED NON-DISCOUNTABLE PARTS****

MODEL No.

RY5500

Item	Part Number	Model's To Fit	Part Description
1	250039	RY5500	PLASTIC CLAMP 5/16
2	370012G	RY5500	WAND
3	370014	RY5500	UPPER HANDLE
4	370019	RY5500	HOUSING RELEASE KNOB
5	370026	RY5500	STRAIN RELIEF
6	370027G	RY5500	HOSE LOCK ADAPTOR
7	370029G	RY5500	HOSE LOCK RING
8	370036G	RY5500	UPPER HOSE
9	370057	RY5500	MOTOR GASKET
10	370072	RY5500	MOTOR DAMPENER
11	370097	RY5500	CREVICE TOOL
12	370137	RY5500	STRAIN RELIEF HOUSING
13	370138	RY5500	HANDLE CAP
14	370173SP	RY5500	FRONT PANEL HOUSING
15	370175B	RY5500	MOTOR HOUSING
16	370213	RY5500	FILTER DOOR ASSEMBLY
17	370177	RY5500	HOSE COUPLING CONNECTOR - ORANGE
18	370178	RY5500	CLIP - BAG LATCH
19	370179	RY5500	COVER - BAG LATCH
20	370181B	RY5500	BUTTON - FILTER COVER
21	370182	RY5500	LOCK AND RELEASE CAM
22	370183	RY5500	MOTOR COVER
23	370184	RY5500	WIRE FORM - LOCK RELEASE
24	370185	RY5500	SPRING - COVER BUTTON
25	370186	RY5500	SPRING - BAG LATCH
26	370187	RY5500	CARRYING HANDLE
27	370188	RY5500	LENS - BAG FULL INDICATOR LIGHT
28	370189	RY5500	LATCH COVER
29	370190	RY5500	FILTER FRAME
30	370191	RY5500	HOLD DOWN TAB
31	370192	RY5500	LATCH
32	370193	RY5500	COVER - ELECTRONICS
33	370195	RY5500	SPRING - CORD HOOK

PART LISTING / PRICE LIST

****THE PARTS LIST FOR THIS UNIT ARE CONSIDERED NON-DISCOUNTABLE PARTS****

MODEL No.

RY5500

Item	Part Number	Model's To Fit	Part Description
34	370196G	RY5500	ACCESSORY TOOL CLIP
35	370197	RY5500	SPRING - BAG COVER LATCH
36	370198	RY5500	LOWER HANDLE
37	370199	RY5500	BACK PANEL GASKET
38	370221PKG	RY5500	BAG - 10 PACK
	53638	RY5500	HOSPITAL BAG - 10 PACK
39	711401	RY5500	RIVIT
40	370204	RY5500	BACKER PLATE
41	715171	RY5500	BASE RELEASE - DECAL
42	370206	RY5500	REAR HOUSING COVER
43	715172	RY5500	CARRYING HANDLE - DECAL
44	711168	RY5500	SCREW 10-32 X .37
45	730203PKG	RY5500	FOAM FILTER - 10 PK
46	710130	RY5500	SCREW 8-32 X .62
47	740250	RY5500	THERMODISC
48	710362	RY5500	SCREW 10-32 X 1.25
49	740704	RY5500	MOTOR
50	711124	RY5500	SCREW 10 X .37
51	740705	RY5500	POWER CORD
52	711161	RY5500	SCREW 10 X .75
53	740711	RY5500	SWITCH
54	711181	RY5500	SCREW 8 X .50
55	740726	RY5500	TERMINAL
56	711372	RY5500	NUT 8-32
57	740734	RY5500	PC BOARD
58	740728	RY5500	AC POWER RECEPTACLE
59	740730	RY5500	GROUNDING WIRE ASSEMBLY
60	740731	RY5500	WIRE ASSEMBLY
61	741011	RY5500	WIRE HARNESS
62	4104419AA	RY5500	RIVIT POP
63	370194	RY5500	CORD HOOK
64	712320	RY5500	WASHER
65	710355	RY5500	SCREW 10-32 X .50

PART LISTING / PRICE LIST

****THE PARTS LIST FOR THIS UNIT ARE CONSIDERED NON-DISCOUNTABLE PARTS****

MODEL No.

RY5500

Item	Part Number	Model's To Fit	Part Description
66	711502	RY5500	FLAT WASHER
67	715154	RY5500	CAUTION - DECAL
68	715155	RY5500	INSERT HOSE - DECAL
69	710128	RY5500	SCREW .25-20 X .50
70	N.A.	RY5500	DATA PLATE
71	715015	RY5500	WARNING - DECAL
72	370207	RY5500	INSULATOR PAD
73	715178	RY5500	DECAL BAG INSTALL
74	190010	RY5500	STRAIN RELIEF
75	370068	RY5500	CARBON BRUSH
76	450209	RY5500	MOTOR GASKET
77	370149	RY5500	MOTOR COVER GASKET
78	715412	RY5500	ROYAL LOGO - DECAL

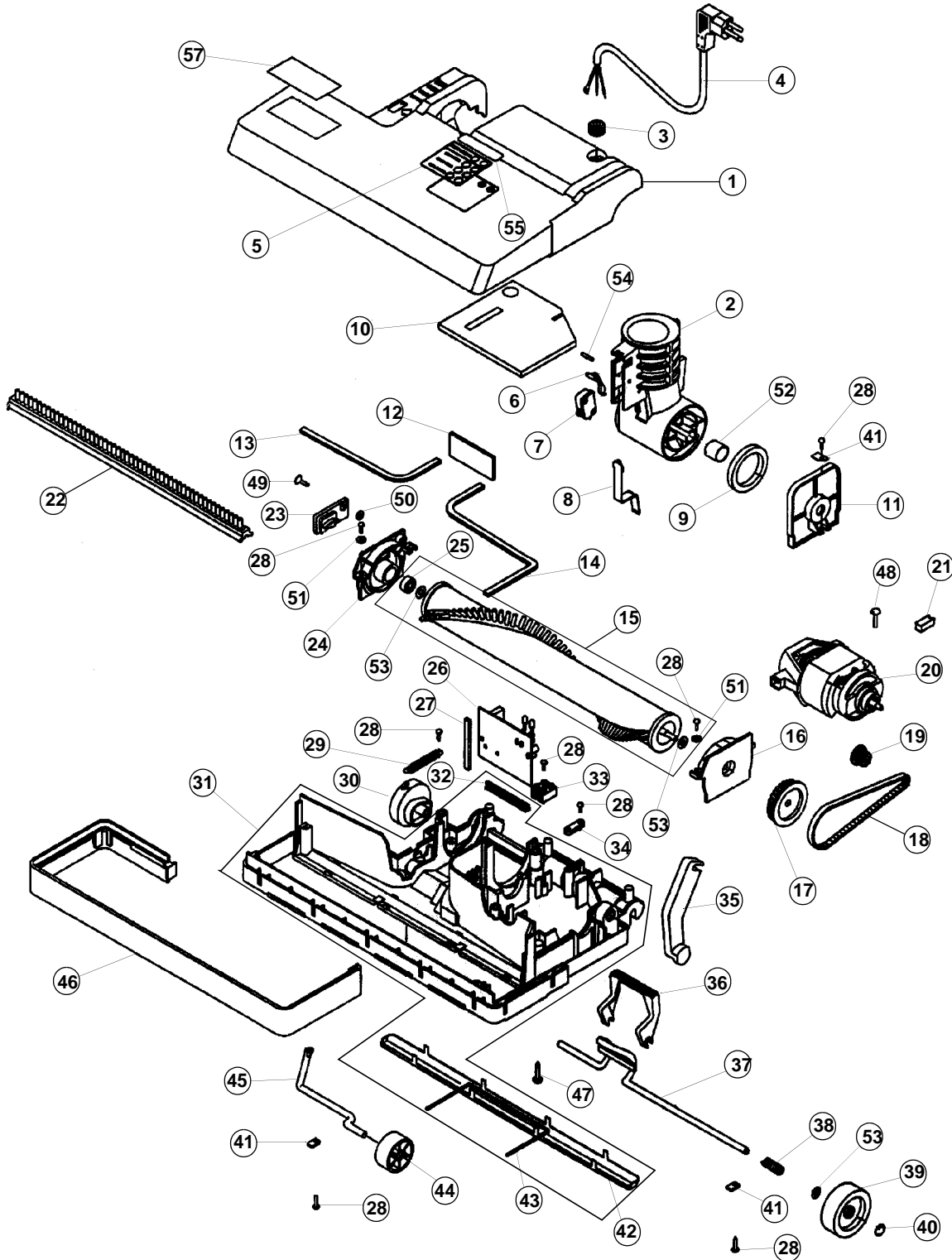
MISCELLANEOUS ACCESSORIES

Item	Part Number	Model's To Fit	Part Description
	370104	RY5500	ROUND DUSTING BRUSH
	370098	RY5500	UPHOLSTERY TOOL
	370350	RY5500	EXTENSION WAND

ASSEMBLY SCHEMATIC

MODEL NO.

RY5500
POWER HEAD



PART LISTING / PRICE LIST

****THE PARTS LIST FOR THIS UNIT ARE CONSIDERED NON-DISCOUNTABLE PARTS****

MODEL No.

**RY5500
POWER HEAD**

Item	Part Number	Model's To Fit	Part Description
1	37006SP	RY5500	BASE COVER ASSEMBLY
2	370141	RY5500	COUPLING PIVOT HOUSING ASSEMBLY
3	370088	RY5500	GROMMET
4	740729	RY5500	POWER CORD
5	715146	RY5500	BRUSH MONITOR - DECAL
6	370030	RY5500	SWITCH FINGER
7	740701	RY5500	SWITCH
8	370059	RY5500	COVER - COUPLING PIVOT SWITCH
9	370203	RY5500	FELT RING FLANGE
10	370210	RY5500	INSULATOR PAD
11	370008	RY5500	COUPLING PIVOT PLATE
12	370085	RY5500	FELT STRIP - BASE COVER
13	370091	RY5500	GASKET - INTAKE COVER 8"
14	370090	RY5500	GASKET - INTAKE COVER 11"
15	370277	RY5500	BRUSH ASSEMBLY 14"
16	370022	RY5500	END PLATE / DRIVE - BRUSH
17	370052	RY5500	BRUSH DRIVE PULLEY
18	370043	RY5500	BELT
19	370209	RY5500	DRIVE PULLEY - MOTOR
20	740700	RY5500	BRUSH MOTOR
21	370069	RY5500	CARBON BRUSH
22	370083	RY5500	BRUSH STRIP ASSEMBLY
23	370044	RY5500	BRUSH STRIP DOOR
24	370023	RY5500	END PLATE / IDLE - BRUSH
25	370077	RY5500	BEARING - BRUSH
26	740719	RY5500	ELECTRONIC CONTROL
27	370092	RY5500	3" CUSHION - C.B.
28	711181	RY5500	SCREW 8 X .50
29	370076	RY5500	SPRING - FRONT AXLE
30	370032	RY5500	HEAD CAM
31	370151	RY5500	BASE ASSEMBLY
32	370152	RY5500	RUBBER STRIP
33	740036	RY5500	TERMINAL BLOCK

PART LISTING / PRICE LIST

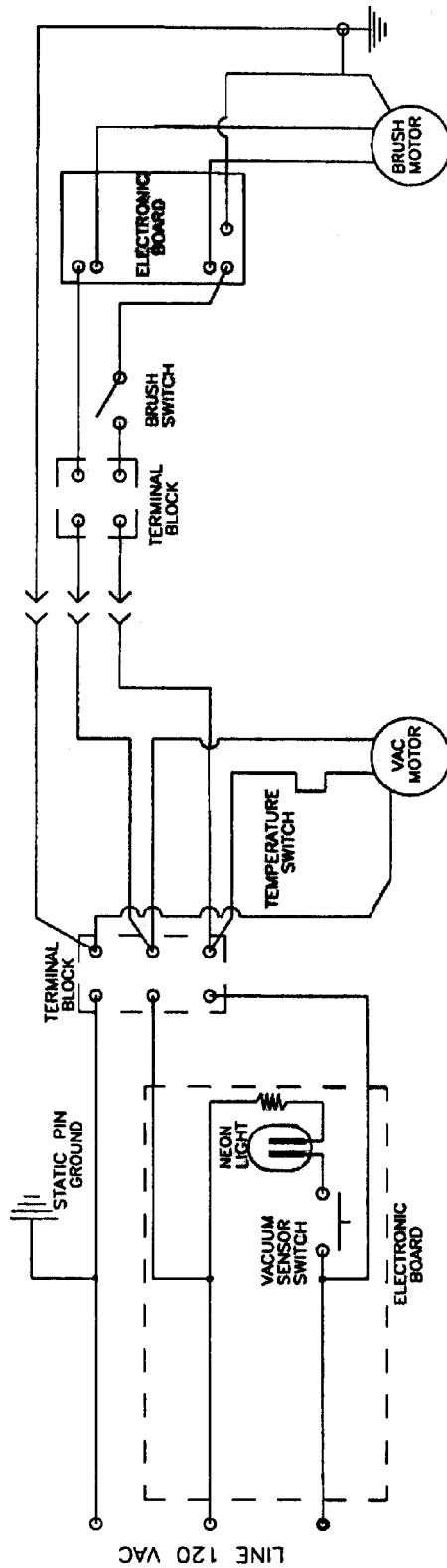
****THE PARTS LIST FOR THIS UNIT ARE CONSIDERED NON-DISCOUNTABLE PARTS****

MODEL No.

RY5500
POWER HEAD

Item	Part Number	Model's To Fit	Part Description
34	370064	RY5500	COVER - STRAIN RELIEF
35	370180	RY5500	SIDE ARM SUPPORT
36	370021	RY5500	FOOT RELEASE PEDAL
37	370045	RY5500	REAR AXLE
38	370273	RY5500	SPRING - AXLE
39	370009	RY5500	2" WHEEL
40	370074	RY5500	WHEEL HUBCAP
41	370075	RY5500	AXLE RETAINER - PLATE
42	370047	RY5500	BRUSH PROTECTOR / GUARD - METAL ORDER #31 370151
43	370071	RY5500	WIRE FORM - BRUSH PROTECTOR
44	370031	RY5500	1 1/2" WHEEL
45	370050	RY5500	WHEEL AXLE
46	370040	RY5500	BUMPER
47	710362	RY5500	SCREW 10-32 X 1.25
48	710130	RY5500	SCREW 8-32 X .62
49	710010	RY5500	SCREW 6-32 X .37
50	370084	RY5500	PUSHNUT BOLT RETAINER
51	711502	RY5500	FLAT WASHER #8
52	370172	RY5500	BUSH BEARING COUPLING
53	711577	RY5500	FLAT WASHER .25
54	370113	RY5500	STRAIGHT KNURLED PIN
55	715156	RY5500	CAUTION - DECAL
56	711523	RY5500	WAVEY WASHER
57	715434	RY5500	ROYAL - DECAL

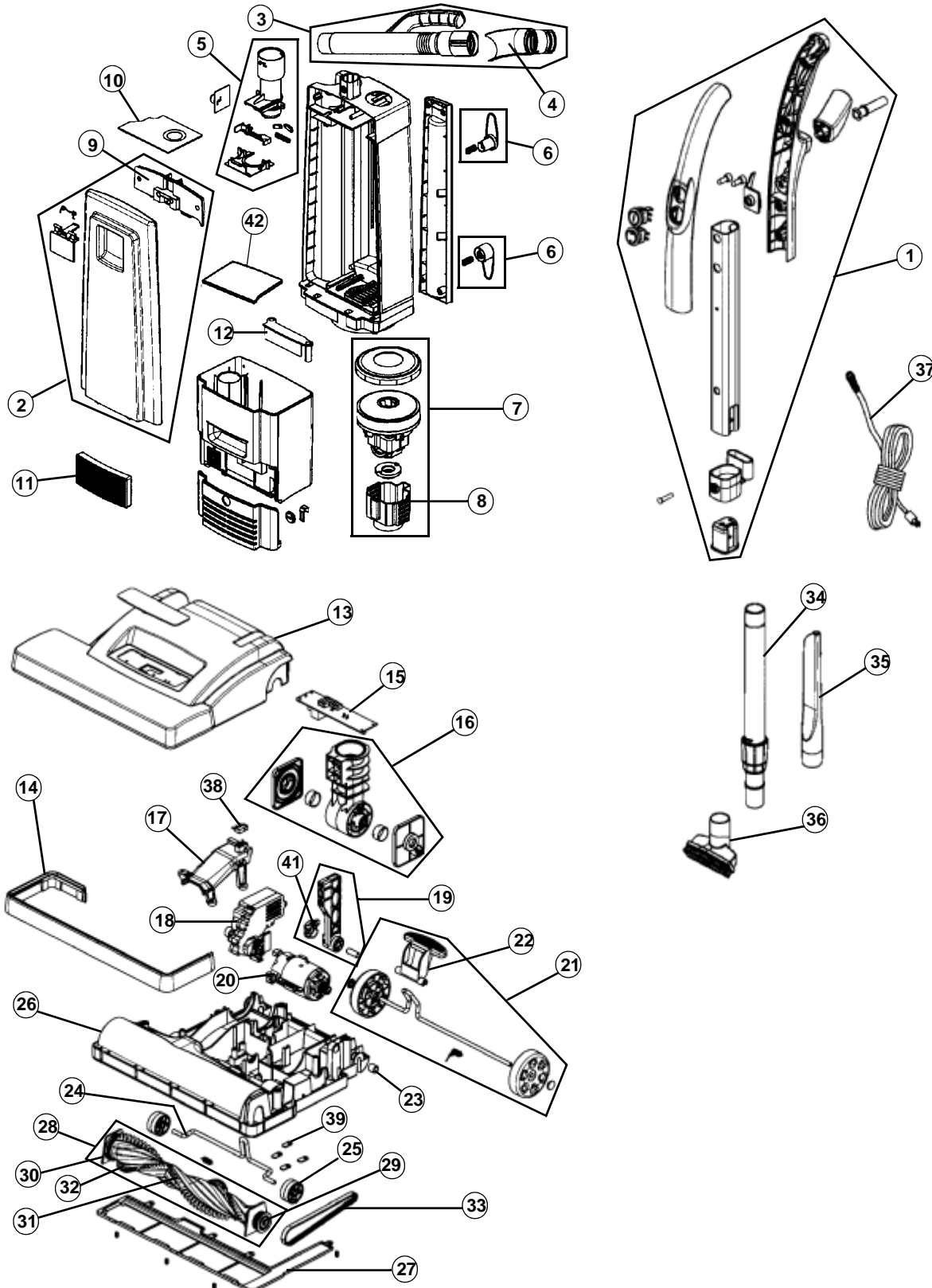
WIRING SCHEMATIC



MODEL No.

RY5500

ASSEMBLY SCHEMATIC



MODEL NO.

RY6900

PART LISTING / PRICE LIST

MODEL No.

RY6900

Item	Part Number	Model's To Fit	Part Description
1	2JS0500600	RY6900	HANDLE ASSEMBLY
2	2JS0900000	RY6900	FRONT PANEL ASSEMBLY
3	2JS0400600	RY6900	HOSE ASSEMBLY
4	1JS0405000	RY6900	UPPER HOSE CUFF
5	1JS0905000	RY6900	BAG MOUNT ADAPTOR
6	1JS0570000	RY6900	CORD HOOK
7	2JS0210000	RY6900	MOTOR ASSEMBLY
8	1JS0220000	RY6900	BLOWER MOTOR SHROUD
9	1JS0906000	RY6900	BACK PANEL SENSOR COVER
10	1JS0370000	RY6900	TYPE N BAG
	3JS0370001	RY6900	TYPE N BAG - 7 PACK
	3JS0371001	RY6900	TYPE N BAG - 10 PACK
11	2JS0360000	RY6900	F-14 FILTER / EXHAUST
12	2JS0510000	RY6900	CARRYING HANDLE - COVER
13	2JS0020600	RY6900	NOZZLE COVER ASSEMBLY - BLACK
14	1JS0030000	RY6900	BUMPER
15	2JS0100000	RY6900	P.C.B.
16	1JS0900000	RY6900	NOZZLE BASE AIR DUCT ASSEMBLY
17	1JS0901000	RY6900	CHANNEL COVER WITH SEAL
18	2JS0160000	RY6900	GEAR BOX
19	1JS0125000	RY6900	PIVOT BAR
20	2JS0004000	RY6900	BRUSH ROLL MOTOR
21	2JS0009000	RY6900	HANDLE RELEASE / REAR WHEEL ASSEMBLY
22	1JS0902000	RY6900	RELEASE PEDAL
23	1JS0903000	RY6900	PIVOT BAR BUSHING
24	1JS0126000	RY6900	WIRE FORM
25	2JS0130600	RY6900	FRONT ROLLER WHEEL - WIRE FORM
26	2JS0010600	RY6900	NOZZLE BASE
27	1JS0015000	RY6900	NOZZLE GUARD
28	2JS0050000	RY6900	BRUSH ROLL ASSEMBLY
29	2JS0060000	RY6900	BRUSH ROLL END CAP PULLY
30	1JS0075000	RY6900	END CAP
31	1JS0056000	RY6900	BRISTLE STRIP - LONG



COMMERCIAL UPRIGHT DUAL MOTOR

6

PART LISTING / PRICE LIST

Item	Part Number	Model's To Fit	Part Description
32	1JS0052000	RY6900	BRISTLE STRIP - SHORT
	3JS0057001	RY6900	BRISTLE STRIPS PACKAGE 2 LONG / 2 SHORT
33	1JS0904000	RY6900	GEARED TIMING BELT
34	2JS0420600	RY6900	EXTENSION WAND
35	1JS0908000	RY6900	CREVICE TOOL
36	1JS0907000	RY6900	DUSTING BRUSH
37	1JS0600000	RY6900	EXTENSION CORD
38	1LJ0205000	RY6900	MICRO SWITCH
39	1LS0120000	RY6900	WIRE FORM CLAMP
40	2JS0090600	RY6900	REAR WHEEL AND HANDLE RELEASE PEDAL ASSEMBLY
41	1JS0120000	RY6900	PIVOT BAR SUPPORT
42	1JS0369000	RY6900	BAG CHAMBER FILTER

MODEL No.

RY6900