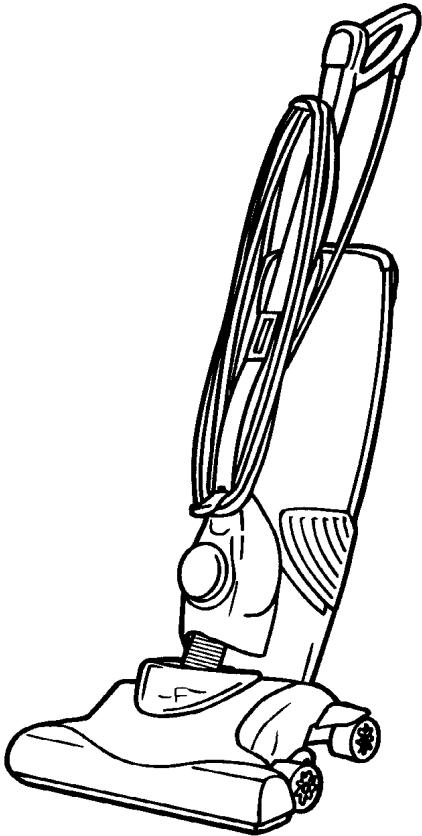


**FLOOREQUIPMENTPARTS.COM**



## SECTION CONTENTS

<u>MODEL No.</u>	<u>PAGE No.</u>
RY9000	18-2 THRU 18-5
RY9100	18-2 THRU 18-5
RY9200	18-2 THRU 18-5
ACCESSORIES	18-6

## MODEL No.

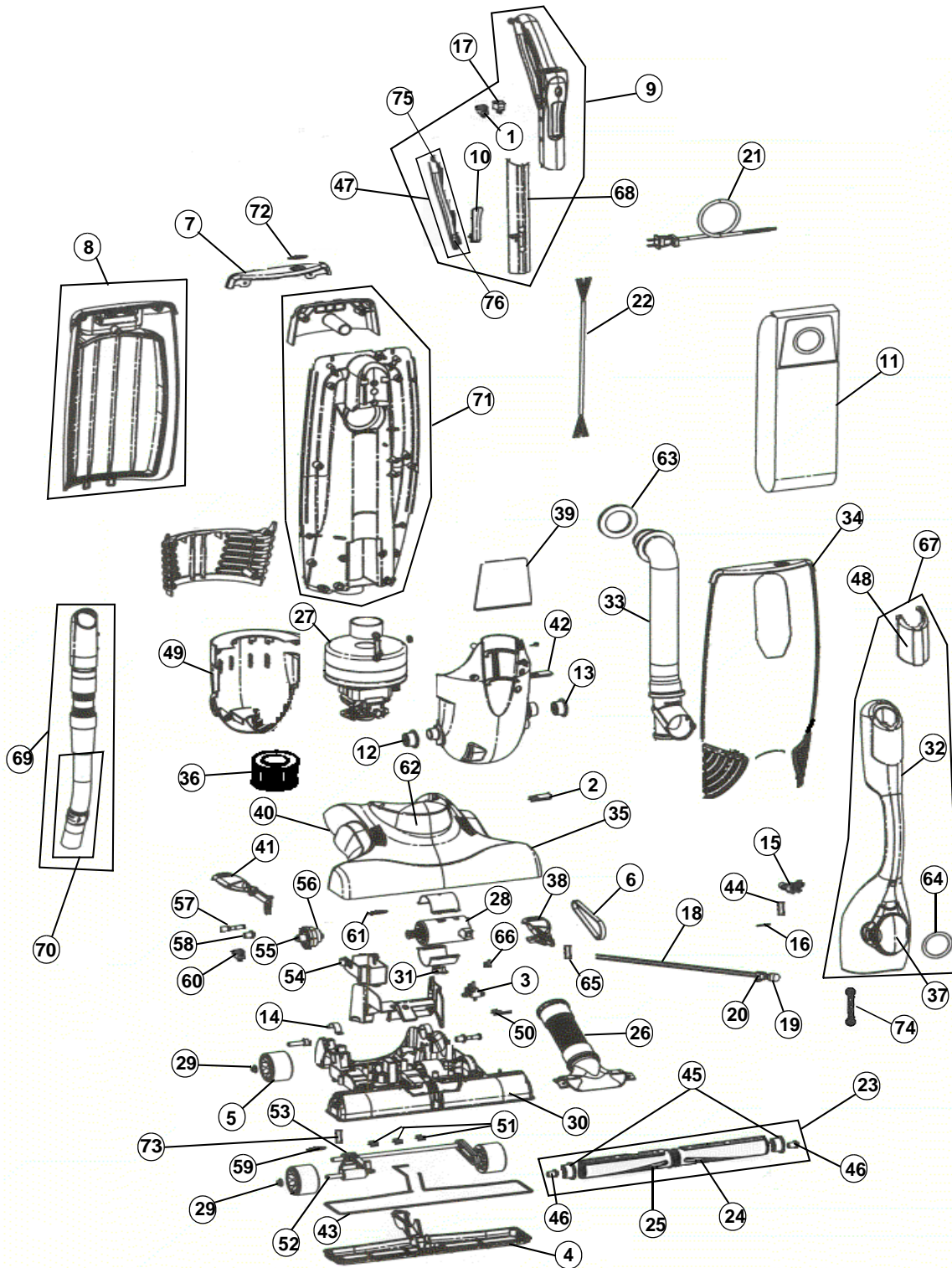
RY9000  
RY9100  
RY9200

- \* PRICING, SPECIFICATION'S, AND PRODUCT AVAILABILITY ARE SUBJECT TO CHANGE WITHOUT NOTICE. PRICING IS FOB FACTORY, GLENWILLOW, OH
- \* ALL INFORMATION CONTAINED WITHIN THIS SERVICE MANUAL IS PROPRIETARY INFORMATION OF TTI FLOOR CARE NORTH AMERICA.
- \* **WARNING:** TO REDUCE THE RISK OF ELECTRICAL SHOCK OR INJURY, ALWAYS DISCONNECT THE APPLIANCE CORD FROM THE ELECTRICAL OUTLET OR REMOVE BATTERY PRIOR TO SERVICING THE UNIT.

## ASSEMBLY SCHEMATIC

MODEL NO.

RY9000  
RY9100  
RY9200



## PART LISTING / PRICE LIST

### MODEL No.

Item	Part Number	Model's To Fit	Part Description
1	1912040600	RY9000, RY9100, RY9200	POWER SWITCH
2	1UA0239000	RY9000, RY9100, RY9200	RECTIFIER ASSEMBLY
3	1912495000	RY9000, RY9100, RY9200	BRUSHROLL MICRO SWITCH
4	1UA0012600	RY9000, RY9100, RY9200	NOZZLE GUARD
5	1UA0015M00	RY9000, RY9100, RY9200	ROLLER
6	1UA0025600	RY9000, RY9100, RY9200	COG BELT
7	1UA0173AZ0	RY9000	BAG CHAMBER TOP ASSY w/o FBI
	2UA0073000	RY9100, RY9200	BAG CHAMBER TOP ASSY w/FBI
8	2UA0075600	RY9000, RY9100, RY9200	BAG CHAMBER DOOR ASSEMBLY
9	2UA0085BB0	RY9000, RY9100, RY9200	UPPER HANDLE ASSEMBLY
10	1UA0089BB0	RY9000, RY9100, RY9200	UPPER CORD HOOK
11	3115016000	RY9000, RY9100	TYPE U ROYAL AIRE BAG - 7 PACK
	1UA1909000	RY9200	TYPE U HEPA BAG
12	1UA0108600	RY9000, RY9100, RY9200	PIVOT RING w/o HOLE
13	1UA0109600	RY9000, RY9100, RY9200	PIVOT RING w/HOLE
14	1UA0110000	RY9000, RY9100, RY9200	PIVOT CLAMP
15	1UA0111BB0	RY9000, RY9100, RY9200	LOWER CORD HOOK
16	1UA0112000	RY9000, RY9100, RY9200	LOWER CORD HOOK SPRING
17	1UA0206000	RY9000, RY9100, RY9200	BRUSHROLL SHUT OFF SWITCH
18	2UA0207000	RY9000, RY9100, RY9200	SOCKET ASSEMBLY
19	1920906000	RY9000, RY9100, RY9200	#906 BULB
20		RY9000, RY9100, RY9200	SOCKET CLIP
21	1UA0211M00	RY9000, RY9100, RY9200	POWER CORD
22	1UA0242000	RY9000, RY9100, RY9200	INTERNAL CORD
23	2UA0340000	RY9000, RY9100, RY9200	BRUSHROLL ASSEMBLY
24	1UA0348000	RY9000, RY9100, RY9200	RIGHT BRISTLE STRIP (1 EACH)
25	1UA0349000	RY9000, RY9100, RY9200	LEFT BRISTLE STRIP (1 EACH)
26	2UA0158000	RY9000, RY9100, RY9200	LOWER HOSE ASSEMBLY
27	2UA0215000	RY9000, RY9100	BLOWER MOTOR ASSEMBLY
	2UA0200000	RY9200	BLOWER MOTOR ASSY - SINGLE
28	2UA0431000	RY9000, RY9100, RY9200	BRUSH MOTOR ASSEMBLY
29	1710102000	RY9000, RY9100, RY9200	WHEEL RETAINER
30	2UA0010000	RY9000, RY9100, RY9200	NOZZLE BASE - ONLY
31	1UA0210000	RY9000, RY9100, RY9200	BRUSH MOTOR CIRCUIT BREAKER
32	1UA0121AZ0	RY9000, RY9100, RY9200	LOWER HANDLE TUBE - PLASTIC
33		RY9000, RY9100, RY9200	LOWER DIRT TUBE GASKET

RY9000  
RY9100  
RY9200

## PART LISTING / PRICE LIST

### MODEL No.

RY9000  
RY9100  
RY9200

Item	Part Number	Model's To Fit	Part Description
34		RY9000	BAG CHAMBER FRONT COVER
		RY9100	BAG CHAMBER FRONT COVER
		RY9200	BAG CHAMBER FRONT COVER
35	1UA0062M00	RY9000, RY9100, RY9200	BUMPER
36	2UA0130000	RY9000, RY9100, RY9200	HEPA FILTER ASSEMBLY
37	1UA0117BB0	RY9000, RY9100, RY9200	HOSE ACCESSORY DOOR - POLISHED
38	1UA0027000	RY9000, RY9100, RY9200	HANDLE RELEASE PEDAL
39	1UA0074000	RY9000, RY9100, RY9200	BAG CHAMBER FILTER
40	1UA0005000	RY9000, RY9100, RY9200	NOZZLE COVER
41	1UA0029000	RY9000, RY9100, RY9200	HEIGHT ADJUSTMENT PEDAL
42	1UA0155000	RY9000, RY9100, RY9200	THRESHOLD STOP
43	1UA0165000	RY9000, RY9100, RY9200	BASE GASKET
44	1UA0310000	RY9000, RY9100, RY9200	ROLL PIN
45	1UA0347000	RY9000, RY9100, RY9200	RUBBER END CAP - <b>ORDER 2UA0340000</b>
46	1UA0346000	RY9000, RY9100, RY9200	NUT
47	2UA0153000	RY9000, RY9100, RY9200	UPPER CORD HOOK RELEASE AND BUTTON LEVER ASSEMBLY <b>ORDER 2UA0085BB0</b>
48	1UA0233BB0	RY9000, RY9100, RY9200	HANDLE COVER W/SCREWS
49	1UA0066000	RY9000, RY9100, RY9200	REAR MOTOR HOUSING
50	2UA0214000	RY9000, RY9100, RY9200	THERMAL FUSE ASSEMBLY
51	1UA0020000	RY9000, RY9100, RY9200	FRONT AXLE BRACKET
52	1UA0022000	RY9000, RY9100, RY9200	FRONT AXEL STUD
53	1UA0023000	RY9000, RY9100, RY9200	HEIGHT ADJUSTMENT BRACKET
54	1UA0050000	RY9000, RY9100, RY9200	HEIGHT ADJUSTMENT HOUSING
55	1UA0051000	RY9000, RY9100, RY9200	HEIGHT ADJUSTMENT CAM
56	1UA0052000	RY9000, RY9100, RY9200	HEIGHT ADJUST RATCHET WHEEL
57	1UA0053000	RY9000, RY9100, RY9200	HEIGHT ADJUSTMENT PIVOT BOLT
58	1UA0054000	RY9000, RY9100, RY9200	BUSHING
59	1UA0056000	RY9000, RY9100, RY9200	HEIGHT ADJUST RETURN SPRING
60	1UA0058000	RY9000, RY9100, RY9200	RATCHET STOP
61	1UA0060000	RY9000, RY9100, RY9200	HEIGHT ADJUST POSITION SPRING
62	1UA0064000	RY9000, RY9100, RY9200	HEAD LIGHT LENS
63	1UA0084000	RY9000, RY9100, RY9200	UPPER DIRT TUBE GASKET
64		RY9000, RY9100, RY9200	HOSE ACCESSORY DOOR GASKET
65	1UA0126000	RY9000, RY9100, RY9200	BRUSH RESET BUTTON

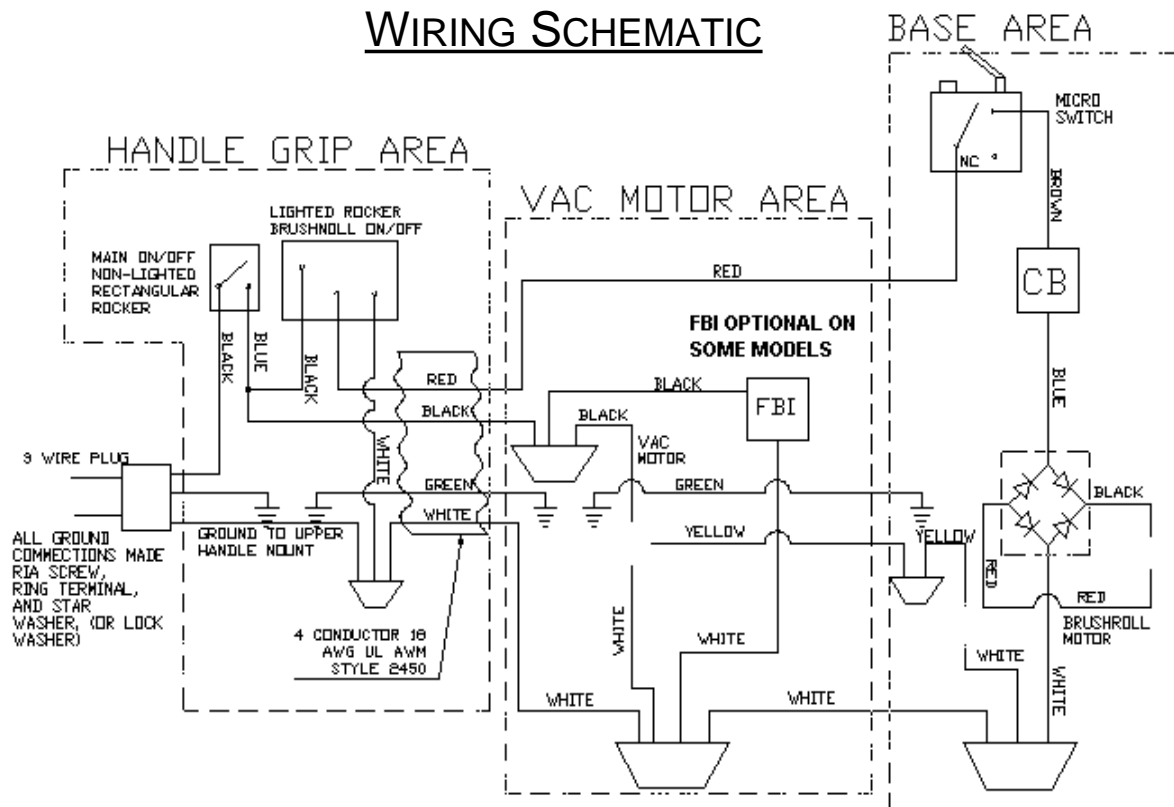
## PART LISTING / PRICE LIST

MODEL No.

RY9000  
RY9100  
RY9200

Item	Part Number	Model's To Fit	Part Description	Net Cost	List Cost
66	1UA0312000	RY9000, RY9100, RY9200	HANDLE RELEASE PEDAL SPRING	.62	1.03
67	2UA0121BB0	RY9000, RY9100, RY9200	COMPLETE LOWER HANDLE ASSEMBLY - PLASTIC	34.30	57.17
68	1UA0085BB0	RY9000, RY9100, RY9200	UPPER HANDLE TUBE	17.46	29.10
69	2UA0186000	RY9000, RY9100, RY9200	HOSE w/PLASTIC WAND ASSEMBLY	37.32	62.20
70	2UA1410000	RY9000, RY9100, RY9200	CURVED WAND & BLEED VALVE ASSEMBLY	N.L.A.	N.L.A.
71	1UA0075600	RY9000, RY9100, RY9200	BAG CHAMBER ASSEMBLY	37.02	61.70
72	1UA0204000	RY9100, RY9200	FULL BAG INDICATOR LENS	.62	1.03
73	1UA0055000	RY9100, RY9200	HGT ADJUST OVERLOAD SPRING	5.84	9.73
74	1UA0116000	RY9000, RY9100, RY9200	ACCESSORY DOOR RETAINER	.62	1.03
75	1UA0152M00	RY9000, RY9100, RY9200	RELEASE BUTTON - UPPER CORD HOOK	.46	.77
76	1UA0153000	RY9000, RY9100, RY9200	RELEASE LEVER - UPPER CORD HOOK	.21	.35

## WIRING SCHEMATIC



## ACCESSORIES

### MODEL No.

RY9000  
RY9100  
RY9200

PART NUMBER	MODEL'S To FIT	PART DESCRIPTION
<b>M306</b>	<b>RY9000, RY9100, RY9200</b>	<b>ATTACHMENT KIT</b>
1402803600	RY9000, RY9100, RY9200	EXTENSION WAND
1502801600	RY9000, RY9100, RY9200	CREVICE TOOL
3050282600	RY9000, RY9100, RY9200	ROUND DUSTING BRUSH
3097682600	RY9000, RY9100, RY9200	10" FLOOR BRUSH NOZZLE
3098584600	RY9000, RY9100, RY9200	UPHOLSTERY TOOL
2UA0186000	RY9000, RY9100, RY9200	STRETCH HOSE ASSEMBLY W/PLASTIC WAND
<b>M307</b>	<b>RY9000, RY9100, RY9200</b>	<b>ATTACHMENT KIT</b>
2UA0180600	RY9000, RY9100, RY9200	ATTACHMENT STORAGE BAG
1258801800	RY9000, RY9100, RY9200	CREVICE TOOL - BURGUNDY
2041076B00	RY9000, RY9100, RY9200	LOWER WAND ASSEMBLY
2041077000	RY9000, RY9100, RY9200	UPPER WAND ASSEMBLY
3097282B00	RY9000, RY9100, RY9200	ROUND DUSTING BRUSH ASSEMBLY
3415582B00	RY9000, RY9100, RY9200	UPHOLSTERY TOOL 6"
3415682B00	RY9000, RY9100, RY9200	10" FLOOR BRUSH ASSEMBLY
2UA0186000	RY9000, RY9100, RY9200	STRETCH HOSE ASSEMBLY W/PLASTIC WAND