

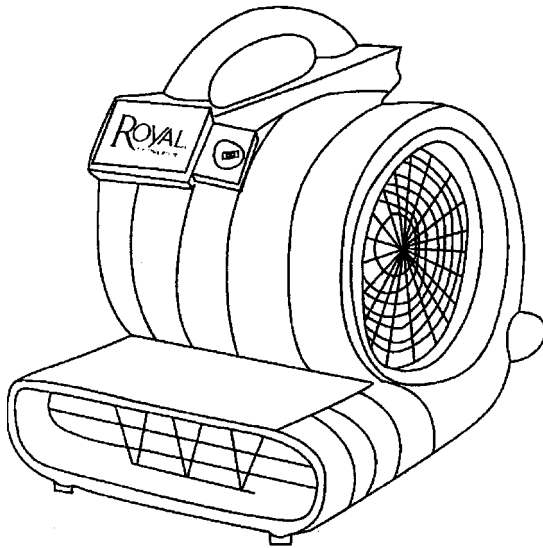
## SECTION CONTENTS

<u>MODEL No.</u>	<u>PAGE No.</u>
RYC100	15-2 THRU 15-3

[MODEL No.](#)

RYC100

**FLOOREQUIPMENTPARTS.COM**

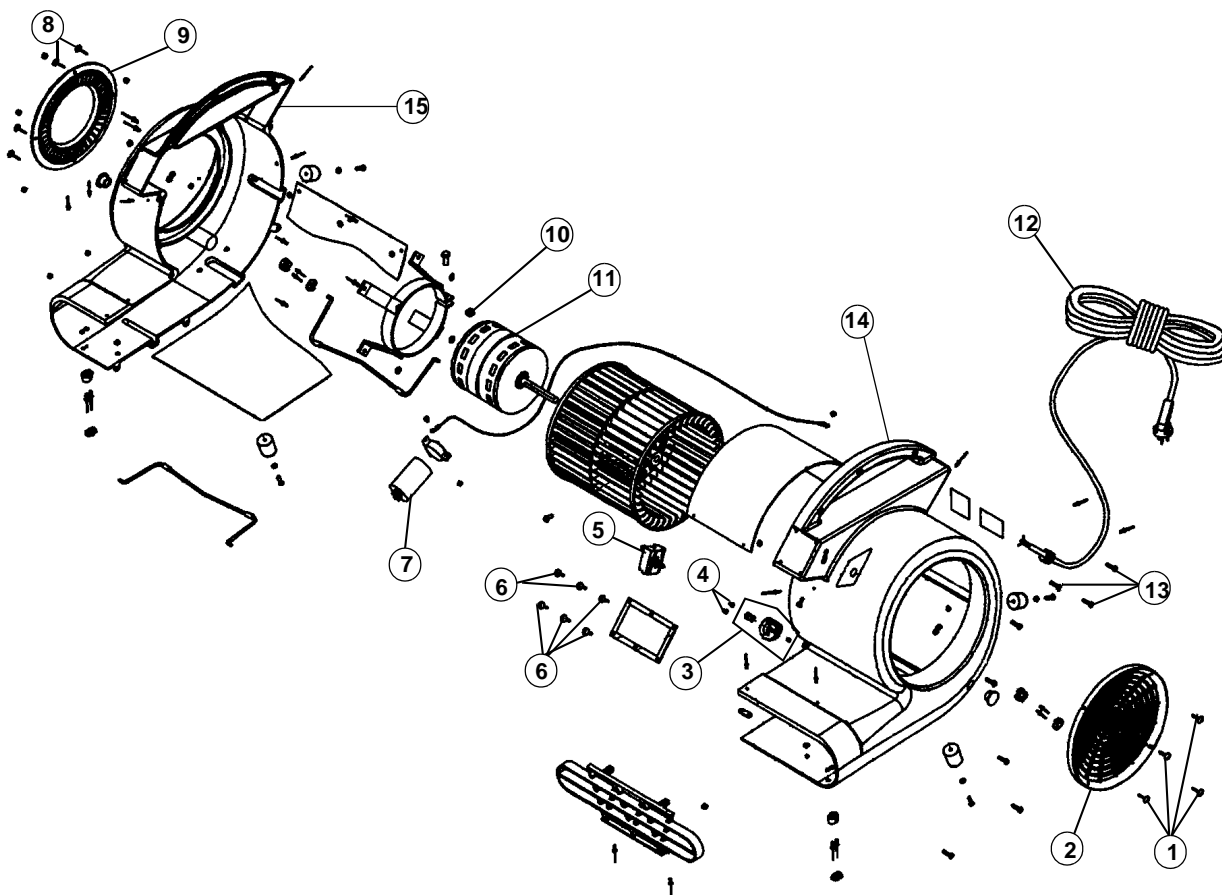


- \* PRICING, SPECIFICATION'S, AND PRODUCT AVAILABILITY ARE SUBJECT TO CHANGE WITHOUT NOTICE. PRICING IS FOB FACTORY, GLENWILLOW, OH
- \* ALL INFORMATION CONTAINED WITHIN THIS SERVICE MANUAL IS PROPRIETARY INFORMATION OF TTI FLOOR CARE NORTH AMERICA.
- \* **WARNING:** TO REDUCE THE RISK OF ELECTRICAL SHOCK OR INJURY, ALWAYS DISCONNECT THE APPLIANCE CORD FROM THE ELECTRICAL OUTLET OR REMOVE BATTERY PRIOR TO SERVICING THE UNIT.

## ASSEMBLY SCHEMATIC

MODEL NO.

RYC100



**PART LISTING / PRICE LIST**

MODEL No.

RYC100

Item	Part Number	Models To Fit	Part Description
1	V V13649	RYC100	SELF TAPPING SCREW 4 X 25
2	V V30107	RYC100	LEFT INTAKE VENT
3	V V30015	RYC100	KNOB REPLACEMENT KIT
4	V V13658	RYC100	FLAT HEAD SCREW M-5 X 20
5	V V30180	RYC100	SWITCH
6	V V13608A	RYC100	SELF TAPPING SCREW M-4 X 12
7	V V30143	RYC100	CAPACITOR
8	V V13640	RYC100	SELF TAPPING SCREW M-4 X 16
9	V V30110	RYC100	RIGHT INTAKE VENT
10	VF13503	RYC100	LOCK NUT M-8 X 5.7
11	YQ61000	RYC100	MOTOR
12	VA65001R	RYC100	POWER CORD - ORANGE 50'
13	V V13636	RYC100	SCREW M-5 X 30
14	VF30101RY	RYC100	RIGHT HOUSING
15	VF30100RY	RYC100	LEFT HOUSING
	V VTHNDL	RYC100	HANDLE & WHEEL KIT ACCESSORY KIT