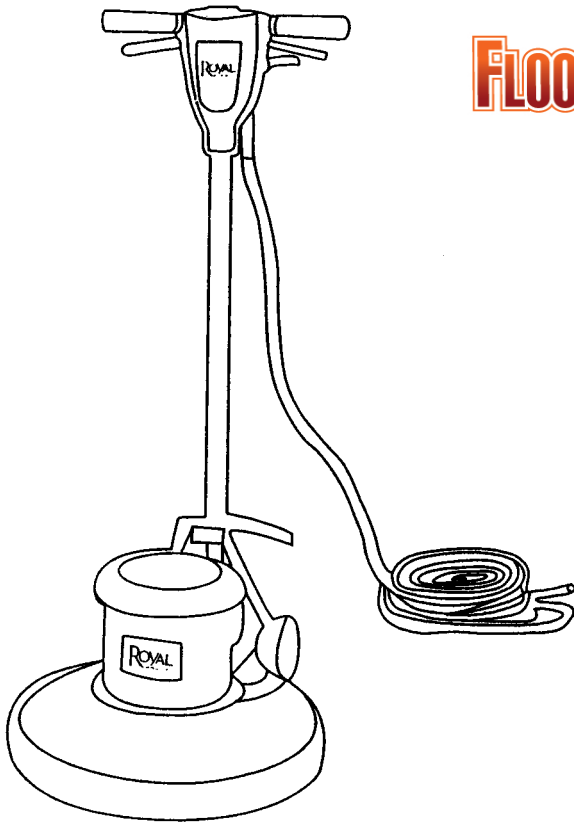


SECTION CONTENTS

<u>MODEL No.</u>	<u>PAGE No.</u>
RYC200	13-2 THRU 13-5
RYC250	13-2 THRU 13-5

[MODEL No.](#)

RYC200
RYC250



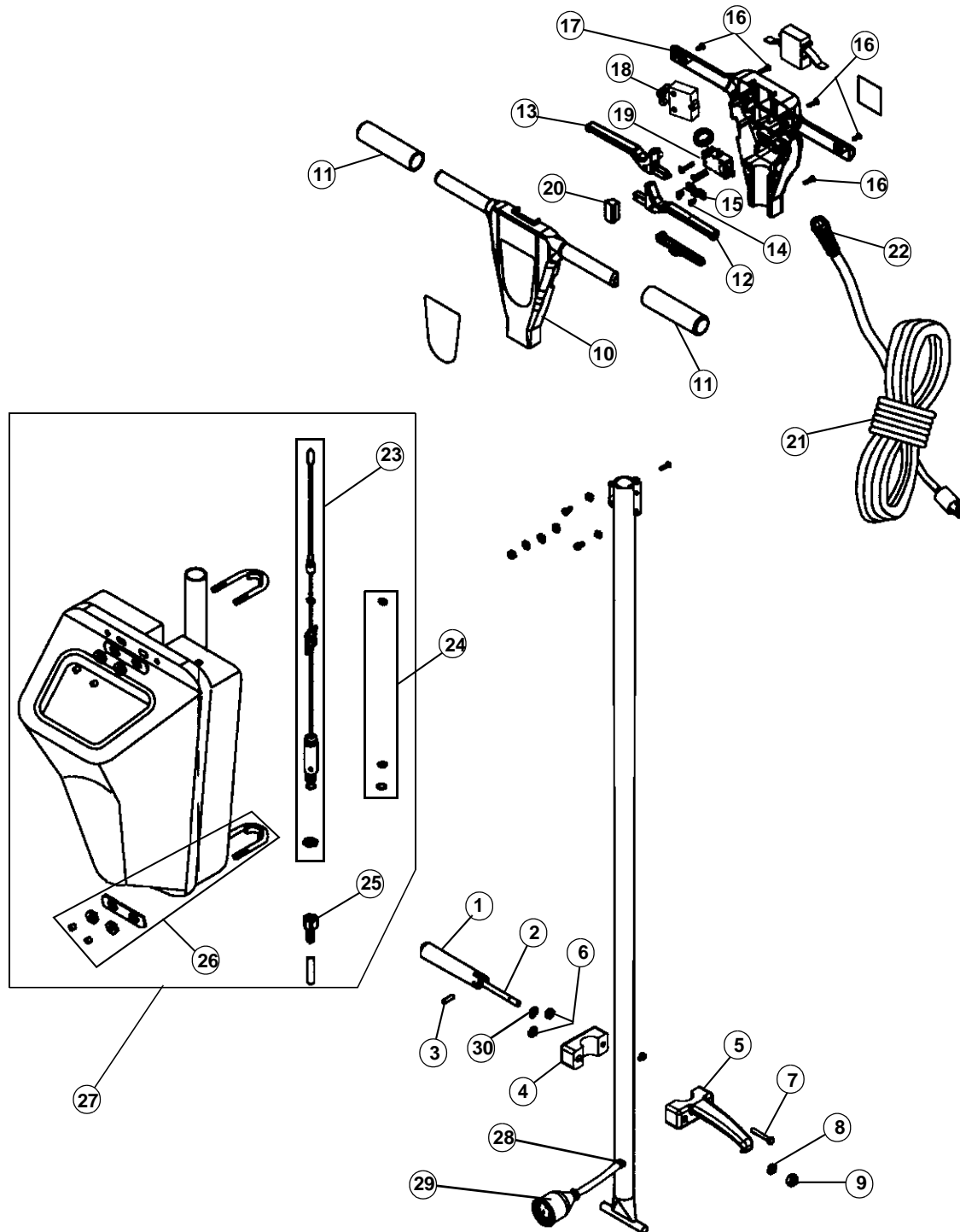
FLOOREQUIPMENTPARTS.COM

- * PRICING, SPECIFICATION'S, AND PRODUCT AVAILABILITY ARE SUBJECT TO CHANGE WITHOUT NOTICE. PRICING IS FOB FACTORY, GLENWILLOW, OH
- * ALL INFORMATION CONTAINED WITHIN THIS SERVICE MANUAL IS PROPRIETARY INFORMATION OF TTI FLOOR CARE NORTH AMERICA.
- * **WARNING:** TO REDUCE THE RISK OF ELECTRICAL SHOCK OR INJURY, ALWAYS DISCONNECT THE APPLIANCE CORD FROM THE ELECTRICAL OUTLET OR REMOVE BATTERY PRIOR TO SERVICING THE UNIT.

ASSEMBLY SCHEMATIC

MODEL NO.

RYC200
RYC250



PART LISTING / PRICE LIST

Item	Part Number	Models To Fit	Part Description
1	AS312215	RYC200, RYC250	HANDLE RELEASE
2	VF30015	RYC200, RYC250	HANDLE RELEASE BOLT
3	VF30017	RYC200, RYC250	SCREW
4	VF30014	RYC200, RYC250	COVER, HOOK
5	VF30013	RYC200, RYC250	CORD HOOK
6	VF13503	RYC200, RYC250	LOCK NUT M-8 X 5.7
7	VF14114	RYC200, RYC250	SCREW M-5 X 55
8	VF13517	RYC200, RYC250	PLAIN WASHER
9	VF13504	RYC200, RYC250	LOCK NUT M-10
10	AS312208	RYC200, RYC250	FRONT HANDLE COVER
11	VF48310	RYC200, RYC250	HANDLE GRIP
12	AS312210	RYC200, RYC250	LEFT LEVER SWITCH
13	AS312211	RYC200, RYC250	RIGHT LEVER SWITCH
14	V V13661	RYC200, RYC250	SCREW M-4 X 12
15	VF48309	RYC200, RYC250	CLAMP BLOCK
16	GT13009	RYC200, RYC250	SCREW M-5 X 30
17	AS312209	RYC200, RYC250	REAR HANDLE COVER
18	VF99012	RYC200, RYC250	CIRCUIT BREAKER 12 AMP
	VF99010C	RYC200, RYC250	CIRCUIT BREAKER 17 AMP
19	VF99023	RYC200, RYC250	SWITCH ASSEMBLY
20	AS312203	RYC200, RYC250	PLUG
21	VF45126	RYC200, RYC250	ORANGE CORD
	VF45119	RYC200, RYC250	YELLOW CORD
22	AS22009	RYC200, RYC250	STRAIN RELIEF
23	VF40200	RYC200, RYC250	VALVE ASSEMBLY KIT
24	VF40001	RYC200, RYC250	TANK SEAL KIT
25	VF40132	RYC200, RYC250	OUTLET POPPET
26	VF40000	RYC200, RYC250	TANK MOUNTING KIT
27	MC020	RYC200, RYC250	SOLUTION TANK
28	VF50120	RYC200, RYC250	GROMMET
29	AS41901	RYC200, RYC250	MALE PLUG PROTECTOR - SMALL
30	VF30018	RYC200, RYC250	WASHER

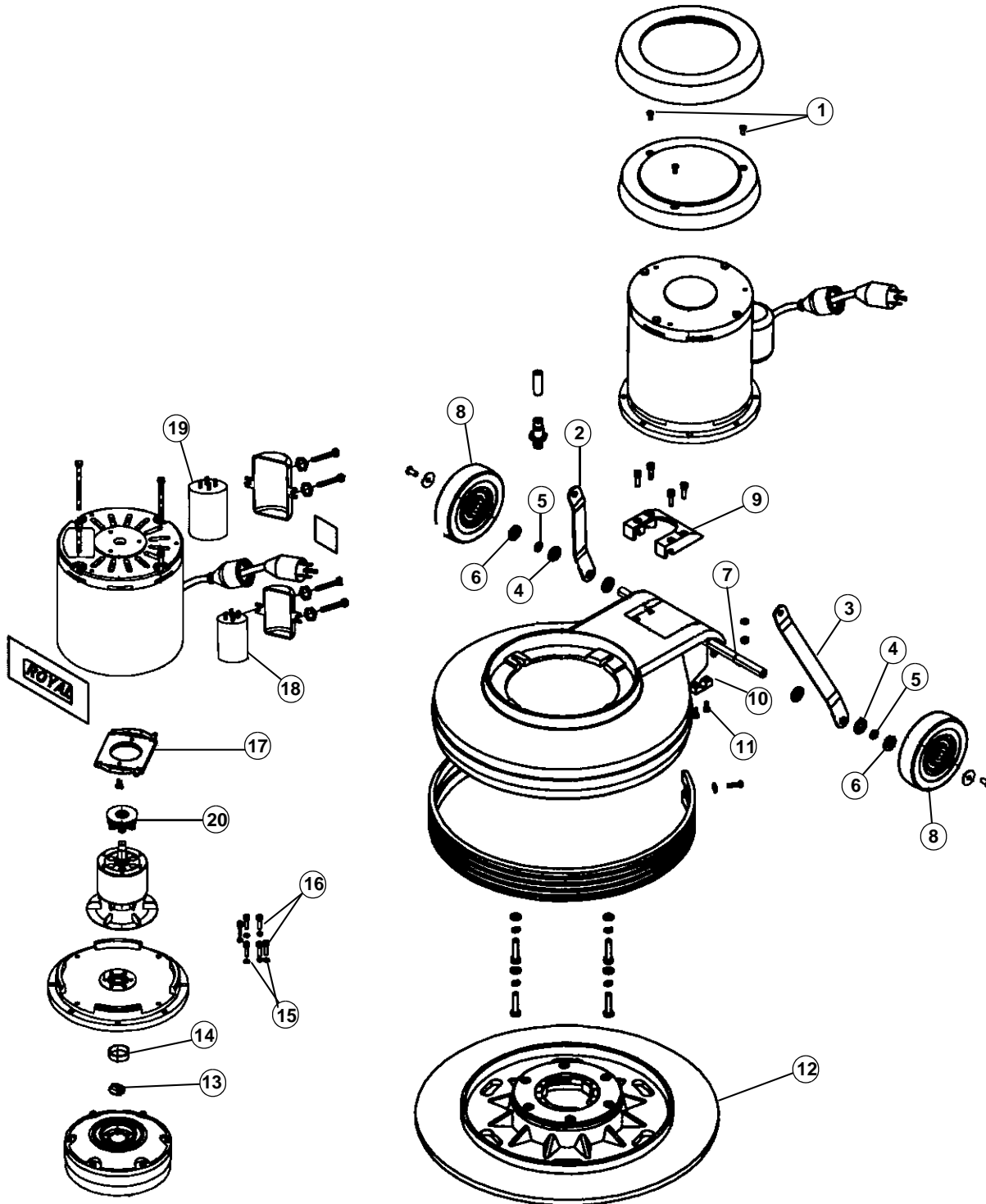
MODEL No.

RYC200
RYC250

ASSEMBLY SCHEMATIC

MODEL NO.

RYC200
RYC250



PART LISTING / PRICE LIST

MODEL No.

RYC200
RYC250

Item	Part Number	Models To Fit	Part Description
1	VA13474	RYC200, RYC250	SCREW M-5 X 16
2	VF30019	RYC200, RYC250	HANDLE BRACKET, RIGHT
3	VF30020	RYC200, RYC250	HANDLE BRACKET, LEFT
4	V V20274	RYC200, RYC250	PLAIN WASHER
5	VF13520	RYC200, RYC250	SMALL LOCK WASHER
6	VF50119	RYC200, RYC250	LARGE LOCK WASHER
7	VF30026	RYC200, RYC250	WHEEL AXLE
8	VF48202	RYC200, RYC250	WHEEL - 5"
9	AS312201	RYC200, RYC250	HANDLE PLATE GUIDE
10	GV40235	RYC200, RYC250	CLAMP BLOCK - AXLE
11	V V13621	RYC200, RYC250	SELF TAPPING SCREW 5 X 20
12	MFVF002	RYC200, RYC250	PAD HOLDER - 17"
	MFVF015	RYC200, RYC250	PAD HOLDER - 20"
13	VF99021	RYC200, RYC250	COUPLING
14	MT01102	RYC200, RYC250	SLEEVE
15	V V13601	RYC200, RYC250	LOCK WASHER
16	V V13636	RYC200, RYC250	SCREW M-5 X 30
17	YCQ10300B	RYC200, RYC250	STATIONARY SWITCH
18	VF999854	RYC200, RYC250	RUNNING CAPACITOR
19	VF999805	RYC200, RYC250	START UP CAPACITOR
20	YCQ10300A	RYC200, RYC250	CENTRIFUGAL SWITCH