

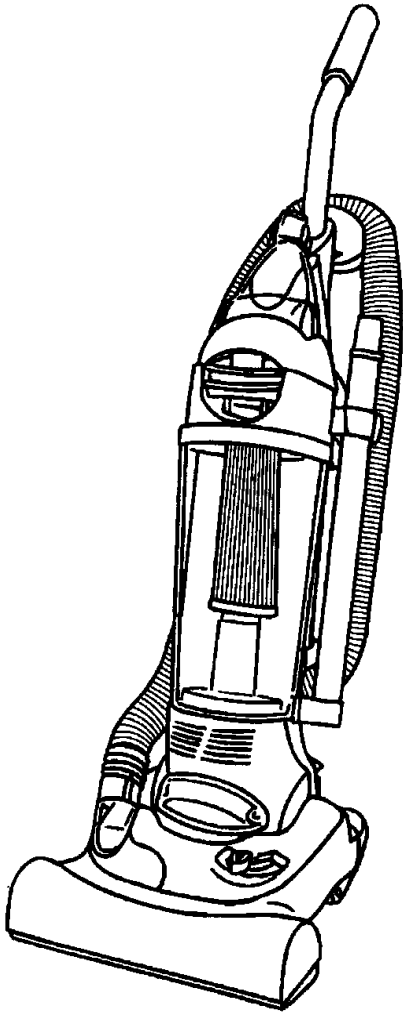
SECTION CONTENTS

<u>MODEL No.</u>	<u>PAGE No.</u>
RY6100	12-2 THRU 12-4

[MODEL No.](#)

RY6100

FLOOREQUIPMENTPARTS.COM

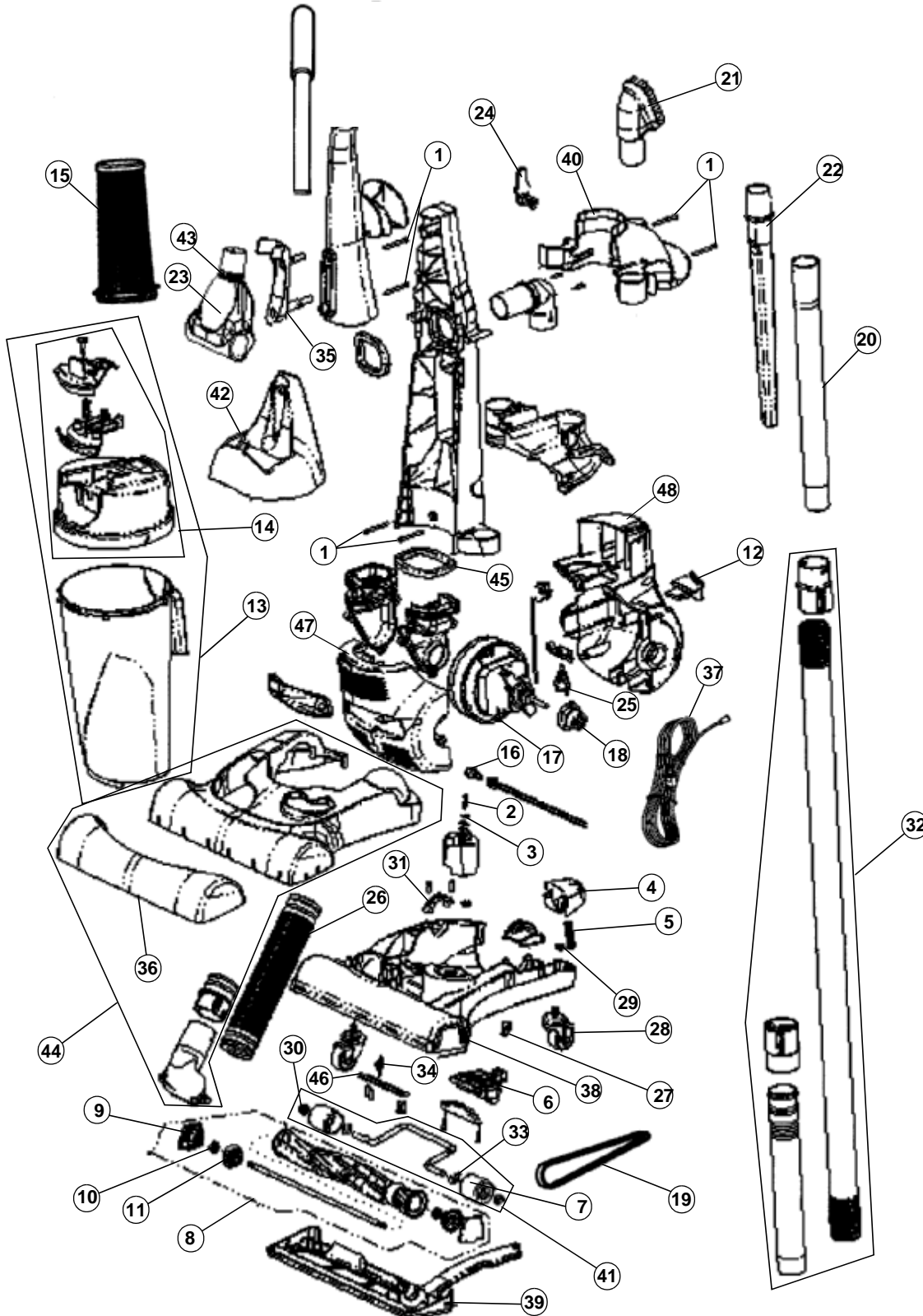


- * PRICING, SPECIFICATION'S, AND PRODUCT AVAILABILITY ARE SUBJECT TO CHANGE WITHOUT NOTICE. PRICING IS FOB FACTORY, GLENWILLOW, OH
- * ALL INFORMATION CONTAINED WITHIN THIS SERVICE MANUAL IS PROPRIETARY INFORMATION OF TTI FLOOR CARE NORTH AMERICA.
- * **WARNING:** TO REDUCE THE RISK OF ELECTRICAL SHOCK OR INJURY, ALWAYS DISCONNECT THE APPLIANCE CORD FROM THE ELECTRICAL OUTLET OR REMOVE BATTERY PRIOR TO SERVICING THE UNIT.

ASSEMBLY SCHEMATIC

MODEL NO.

RY6100



PART LISTING / PRICE LIST

MODEL No.

RY6100

Item	Part Number	Model's to Fit	Part Description
1	2690330000	RY6100	SCREW PACKAGE (2)
2	1JC0300000	RY6100	SCREW - HEIGHT ADJUSTMENT
3	1910298000	RY6100	BUSHING - HEIGHT ADJUSTMENT
4	1JC0075G00	RY6100	HANDLE RELEASE PEDAL
5	1JC0070000	RY6100	RELEASE PEDAL SPRING
6	1JC0100600	RY6100	ROLLER LIFTER
7	1910330600	RY6100	FRONT ROLLER
8	2JC0110000	RY6100	BRUSH ROLL ASSEMBLY
9	1910380000	RY6100	END CAP
10	1881095000	RY6100	BRUSH BEARING
11	1910385000	RY6100	BEARING SUPPORT
12	1JC0140G00	RY6100	SWITCH PEDAL
13	2JC0220600	RY6100	DIRT CUP ASSEMBLY
14	1JC0215600	RY6100	DIRT CUP LID ASSEMBLY
15	2JC0360000	RY6100	F1 - HEPA FILTER
16	1920906000	RY6100	BULB - 906
17	1JC0290000	RY6100	MOTOR ASSEMBLY
18	1881130000	RY6100	GROMMET
19	3860140600	RY6100	STYLE 10 BELT / 2 PACK
20	1JC0245600	RY6100	EXTENSION WAND
21	2JC0255600	RY6100	DUSTING BRUSH ASSEMBLY
22	1JC0250600	RY6100	CREVICE TOOL
23	2UTT200000	RY6100	TURBO TOOL
	1UTT020000	RY6100	COGGED BELT - TURBO TOOL
24	1790655600	RY6100	CORD HOOK
25	1860081000	RY6100	SWITCH
26	2881015600	RY6100	LOWER HOSE ASSEMBLY
27	1720380000	RY6100	BELT CLIP GUIDE
28	2863038600	RY6100	CASTER
29	1863054000	RY6100	CASTER PAL NUT
30	1912420000	RY6100	WHEEL RETAINER
31	1820351600	RY6100	PIVOT CLAMP
32	2JC0010600	RY6100	HOSE ASSEMBLY

PART LISTING / PRICE LIST

MODEL No.

RY6100

Item	Part Number	Model's to Fit	Part Description
33	1990249000	RY6100	WIRE FORM WASHER
34	1910320000	RY6100	WIRE FORM SPRING
35	1JC0335600	RY6100	TURBO TOOL CLIP
36	1JC0050B00	RY6100	BUMPER
37	1061136AU0	RY6100	POWER CORD - 50' / 3-WIRE
38	1JC0035600	RY6100	NOZZLE BASE
39	1JC0055600	RY6100	NOZZLE GUARD
40	1JC0200B00	RY6100	TOOL CADDY
41	2JC0060000	RY6100	WIREFORM ASSEMBLY
42	1JC0330600	RY6100	TURBO TOOL CADDY
43	1UTT030000	RY6100	TURBO TOOL LOCK NUT RING
44	2JC0045600	RY6100	NOZZLE COVER ASSEMBLY
45	1JC0225000	RY6100	INLET DUCT GASKET
46	1JC0065000	RY6100	WIREFORM CLAMP
47	1JC0175600	RY6100	FRONT MOTOR HOUSING
48	1JC0180600	RY6100	REAR MOTOR HOUSING