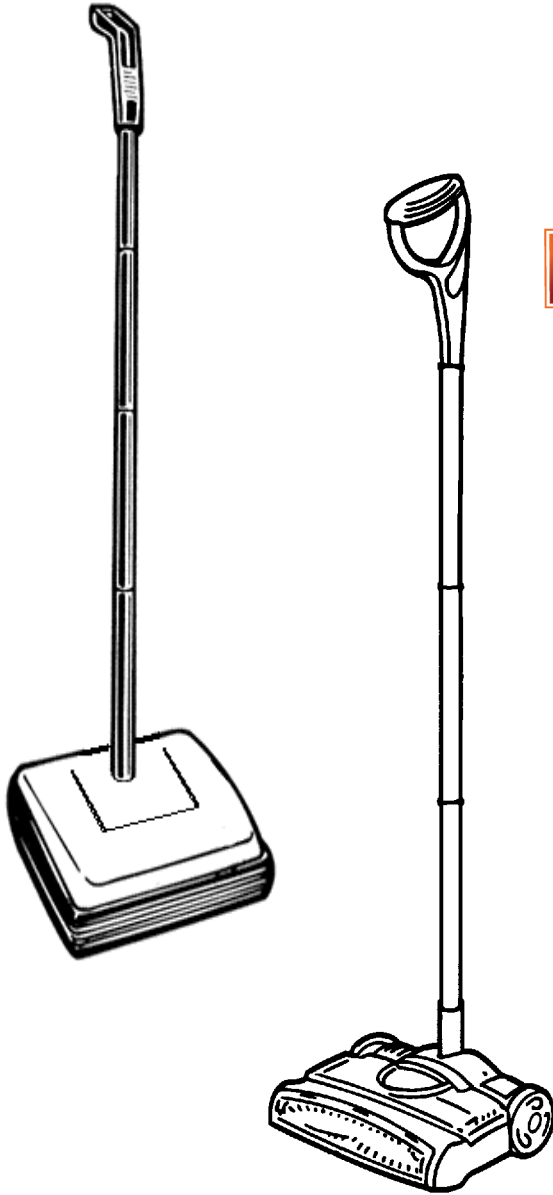


SECTION CONTENTS

<u>MODEL No.</u>	<u>PAGE No.</u>
090	10-2 THRU 10-3
RY8447	10-4 THRU 10-5

MODEL No.

090
RY8447



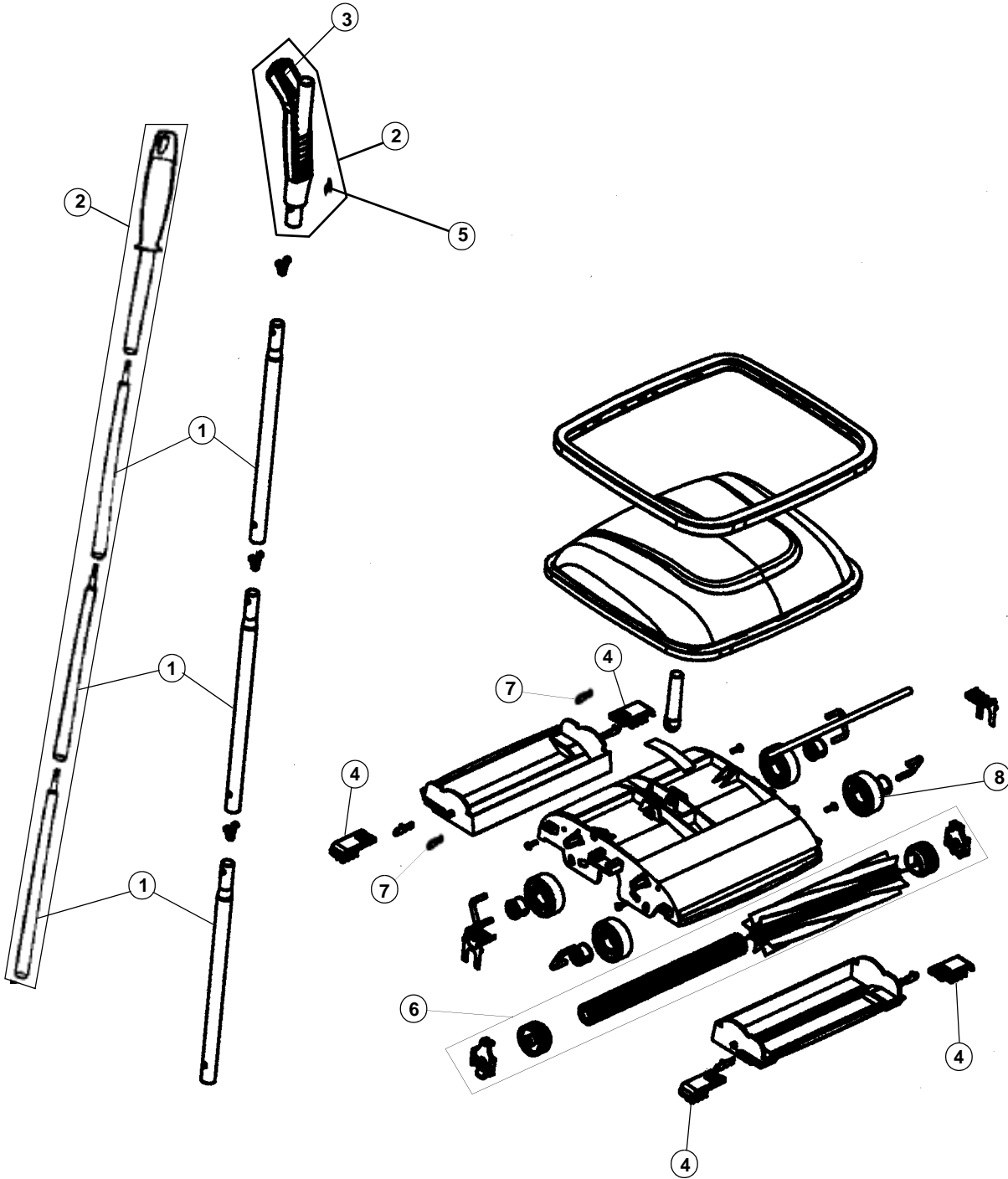
FLOOREQUIPMENTPARTS.COM

- * PRICING, SPECIFICATION'S, AND PRODUCT AVAILABILITY ARE SUBJECT TO CHANGE WITHOUT NOTICE. PRICING IS FOB FACTORY, GLENWILLOW, OH
- * ALL INFORMATION CONTAINED WITHIN THIS SERVICE MANUAL IS PROPRIETARY INFORMATION OF TTI FLOOR CARE NORTH AMERICA.
- * **WARNING:** TO REDUCE THE RISK OF ELECTRICAL SHOCK OR INJURY, ALWAYS DISCONNECT THE APPLIANCE CORD FROM THE ELECTRICAL OUTLET OR REMOVE BATTERY PRIOR TO SERVICING THE UNIT.

ASSEMBLY SCHEMATIC

MODEL NO.

090



PART LISTING / PRICE LIST

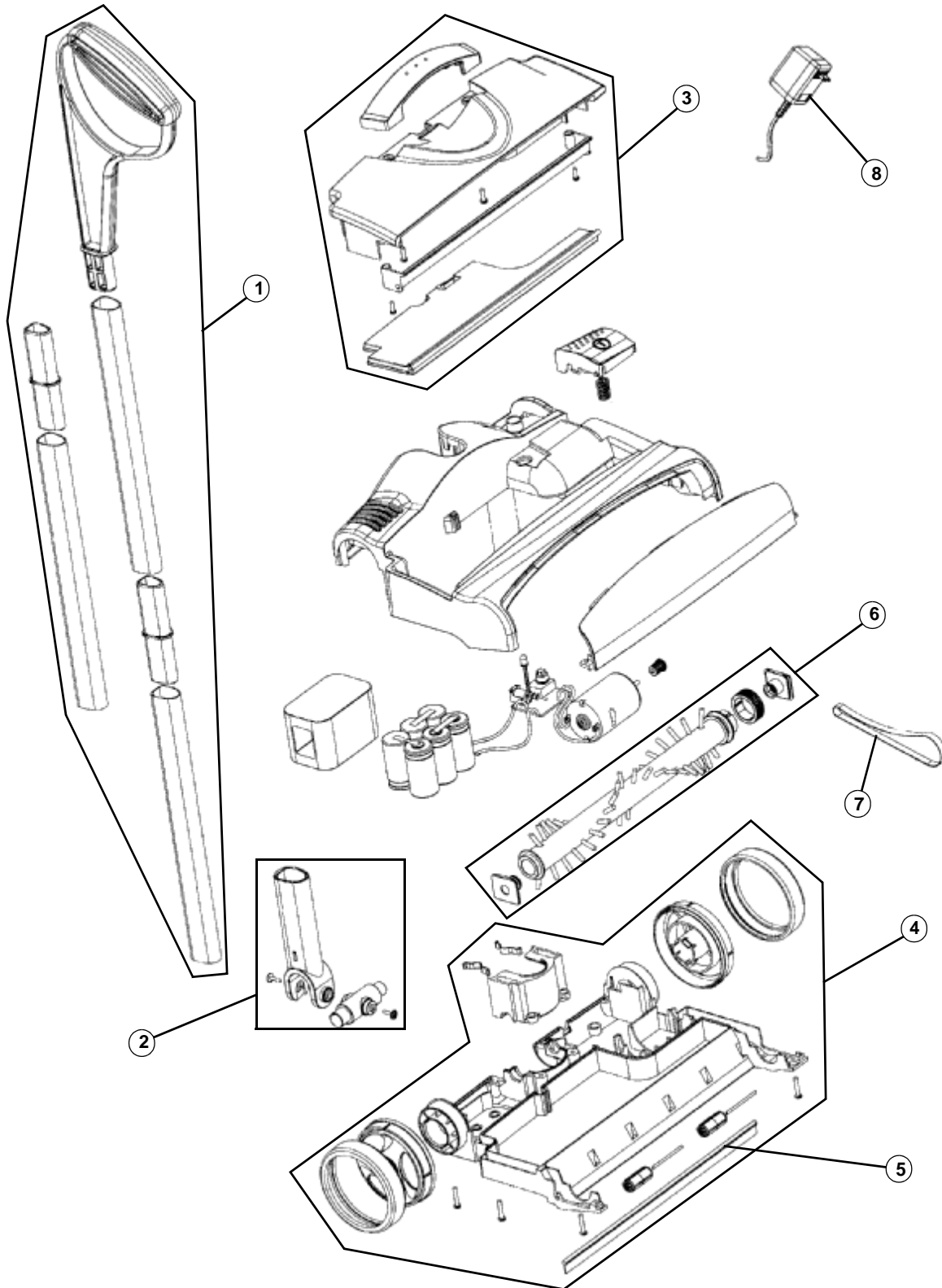
MODEL No.

090

Item	Part Number	Models To Fit	Part Description
1	1EA1005000	090	HANDLE TUBES - LOWER / CLIP TYPE
		090	HANDLE TUBES - LOWER / SCREW TYPE
2	2EA1006000	090	HANDLE TUBE ASSEMBLY w/GRIP CLIP TYPE
	2EA1007000	090	HANDLE TUBE ASSEMBLY w/GRIP SCREW TYPE
3	1EA1002000	090	HANDLE GRIP ORDER # 2
4	1EA1003000	090	BRUSH
5	1EA01004000	090	HANDLE SCREW ASSEMBLY
6	2EA0200000	090	BRUSH ROLL ASSEMBLY
7	1EA0150000	090	PULL SPRING
8	1EA1009000	090	DRIVE WHEEL - SET OF 4

ASSEMBLY SCHEMATIC

MODEL NO.
RY8447





COMMERCIAL SWEEPER PLUS

10

PART LISTING / PRICE LIST

Item	Part Number	Models To Fit	Part Description
1	2SU1102000	RY8447	HANDLE ASSEMBLY
2	2SU1101000	RY8447	PIVOT ASSEMBLY
3	2SU1103000	RY8447	DIRT CUP ASSEMBLY
4	2SU2000000	RY8447	NOZZLE BASE ASSEMBLY
5	1SU1101000	RY8447	RUBBER STRIP
6	2SU1000000	RY8447	BRUSH ROLL ASSEMBLY
7	1SU1000000	RY8447	BELT
8	2SU0990000	RY8447	CHARGER ASSEMBLY

MODEL No.

RY8447