



LIGHTWEIGHT
BAGGED
UPRIGHT

PLATINUM
Collection

BAGGED
CANISTER
VACUUM

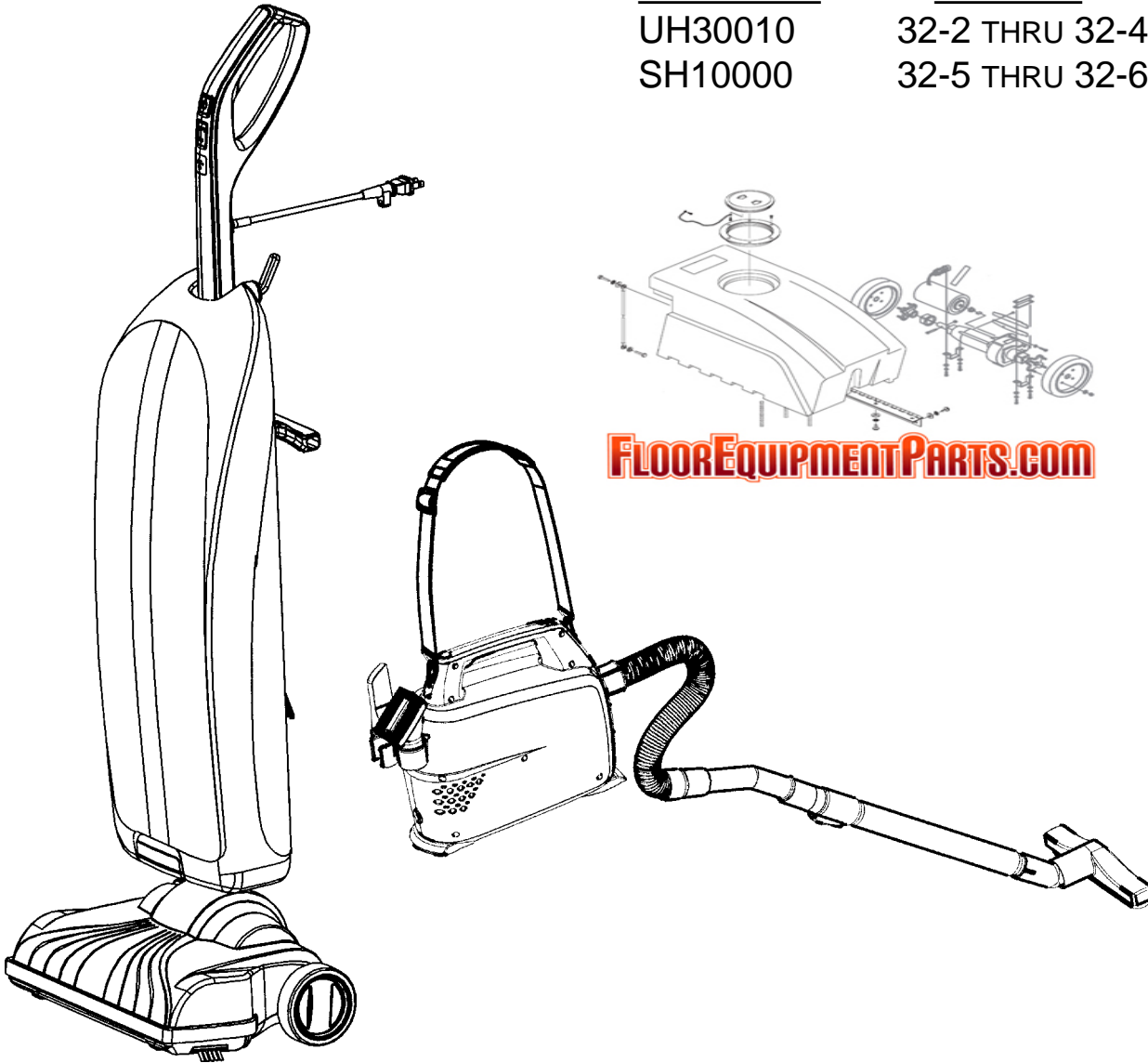
32

SECTION CONTENTS

<u>MODEL No.</u>	<u>PAGE No.</u>
UH30010	32-2 THRU 32-4
SH10000	32-5 THRU 32-6

MODEL No.

UH30010COM
UH30010
SH10000



FLOOR EQUIPMENT PARTS.COM

- * PRICING, SPECIFICATION'S, AND PRODUCT AVAILABILITY ARE SUBJECT TO CHANGE WITHOUT NOTICE. PRICING IS FOB FACTORY, CANTON, OH
- * ALL INFORMATION CONTAINED WITHIN THIS SERVICE MANUAL IS PROPRIETARY INFORMATION OF TTI FLOOR CARE NORTH AMERICA.
- * **WARNING:** TO REDUCE THE RISK OF ELECTRICAL SHOCK OR INJURY, ALWAYS DISCONNECT THE APPLIANCE CORD FROM THE ELECTRICAL OUTLET OR REMOVE BATTERY PRIOR TO SERVICING THE UNIT.



PLATINUM
Collection

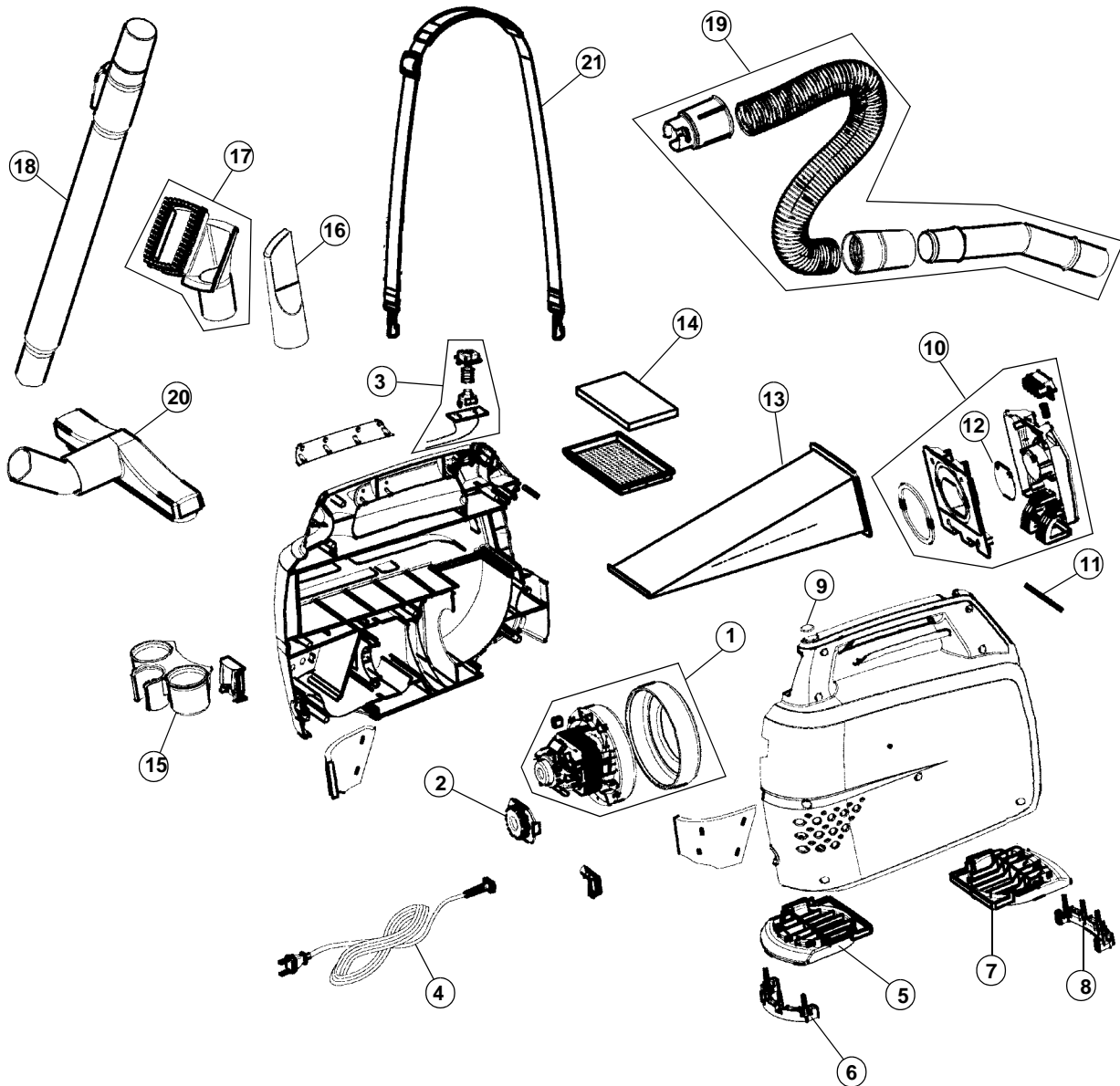
**BAGGED
CANISTER
VACUUM**

32

ASSEMBLY SCHEMATIC

MODEL NO.

SH10000





PLATINUM
Collection

**BAGGED
CANISTER
VACUUM**

32

PART LISTING / PRICE LIST

MODEL No.

SH10000

ITEM	PART NUMBER	MODELS To FIT	PART DESCRIPTION	LIST COST
1	2HVR101000	SH10000	MOTOR ASSEMBLY	33.88
2	5002850590	SH10000	MOTOR GROMMET	3.96
3	2HVR104000	SH10000	SWITCH ASSEMBLY WITH LEADS	6.01
4	4000150590	SH10000	POWER CORD	20.79
5	1001505911	SH10000	FOOT - FRONT	4.27
6	5000450590	SH10000	RUBBER FOOT - FRONT	1.26
7	1001505920	SH10000	FOOT - REAR	4.16
8	5000450592	SH10000	RUBBER FOOT - REAR	1.26
9	2000850590	SH10000	MEDALLION - HOOVER	3.29
10	2HVR102000	SH10000	BAG DOOR ASSEMBLY	10.58
11	3001250590	SH10000	PIN - BAG DOOR	.33
12	5000150590	SH10000	DIRT FLAP - BAG DOOR	.22
13	985059002	SH10000	TYPE I BAG HEPA	2.19
	AH10005	SH10000	TYPE I BAG HEPA - 2 PK	2.40 NON DISC
	AH10025	SH10000	TYPE I BAG ALLERGEN - 3 PK	N.A.
14	5003850590	SH10000	INLET FOAM FILTER	1.05
15	1004505906	SH10000	TOOL HOLDER	2.03
16	1004505903	SH10000	CREVICE TOOL	2.60
17	1004505901	SH10000	UPHOLSTERY TOOL	4.41
18	2HVR100000	SH10000	TELESCOPING EXTENSION WAND	20.09
19	2HVR103000	SH10000	HOSE ASSEMBLY	18.28
20	2HVR105000	SH10000	NOZZLE FLOOR BRUSH ASSEMBLY	15.05
21	5002650590	SH10000	SHOULDER CARRYING STRAP	4.48