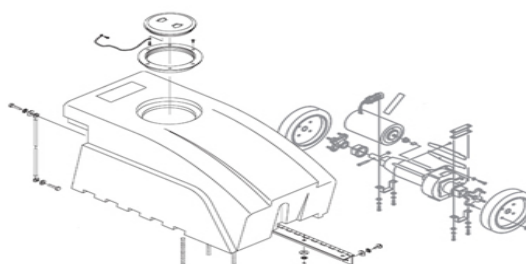
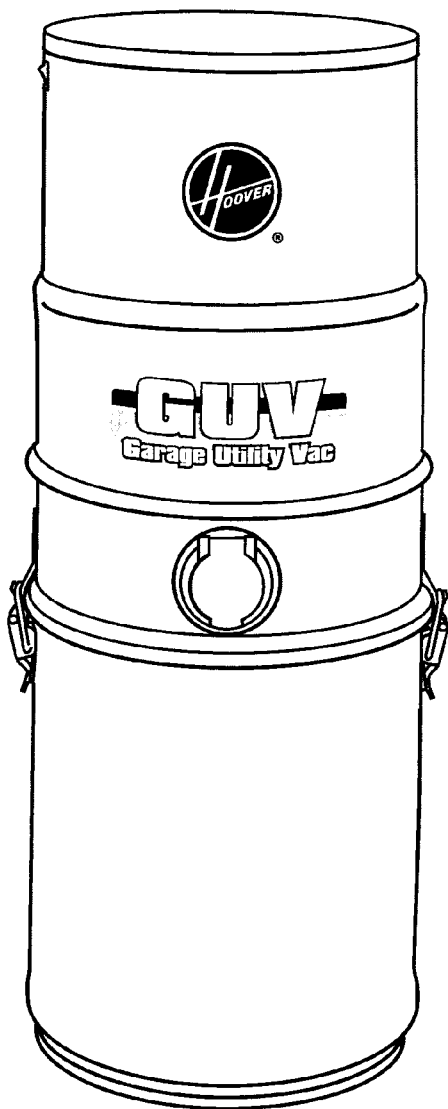


SECTION CONTENTS

<u>MODEL NO.</u>	<u>PAGE NO.</u>
L2310	26-2 THRU 26-3
L2315	26-2 THRU 26-3

MODEL No.

L2310
L2315



FLOOR EQUIPMENT PARTS.COM

- * PRICING, SPECIFICATION'S, AND PRODUCT AVAILABILITY ARE SUBJECT TO CHANGE WITHOUT NOTICE. PRICING IS FOB FACTORY, CANTON, OH
- * ALL INFORMATION CONTAINED WITHIN THIS SERVICE MANUAL IS PROPRIETARY INFORMATION OF TTI FLOOR CARE NORTH AMERICA.
- * **WARNING:** TO REDUCE THE RISK OF ELECTRICAL SHOCK OR INJURY, ALWAYS DISCONNECT THE APPLIANCE CORD FROM THE ELECTRICAL OUTLET OR REMOVE BATTERY PRIOR TO SERVICING THE UNIT.

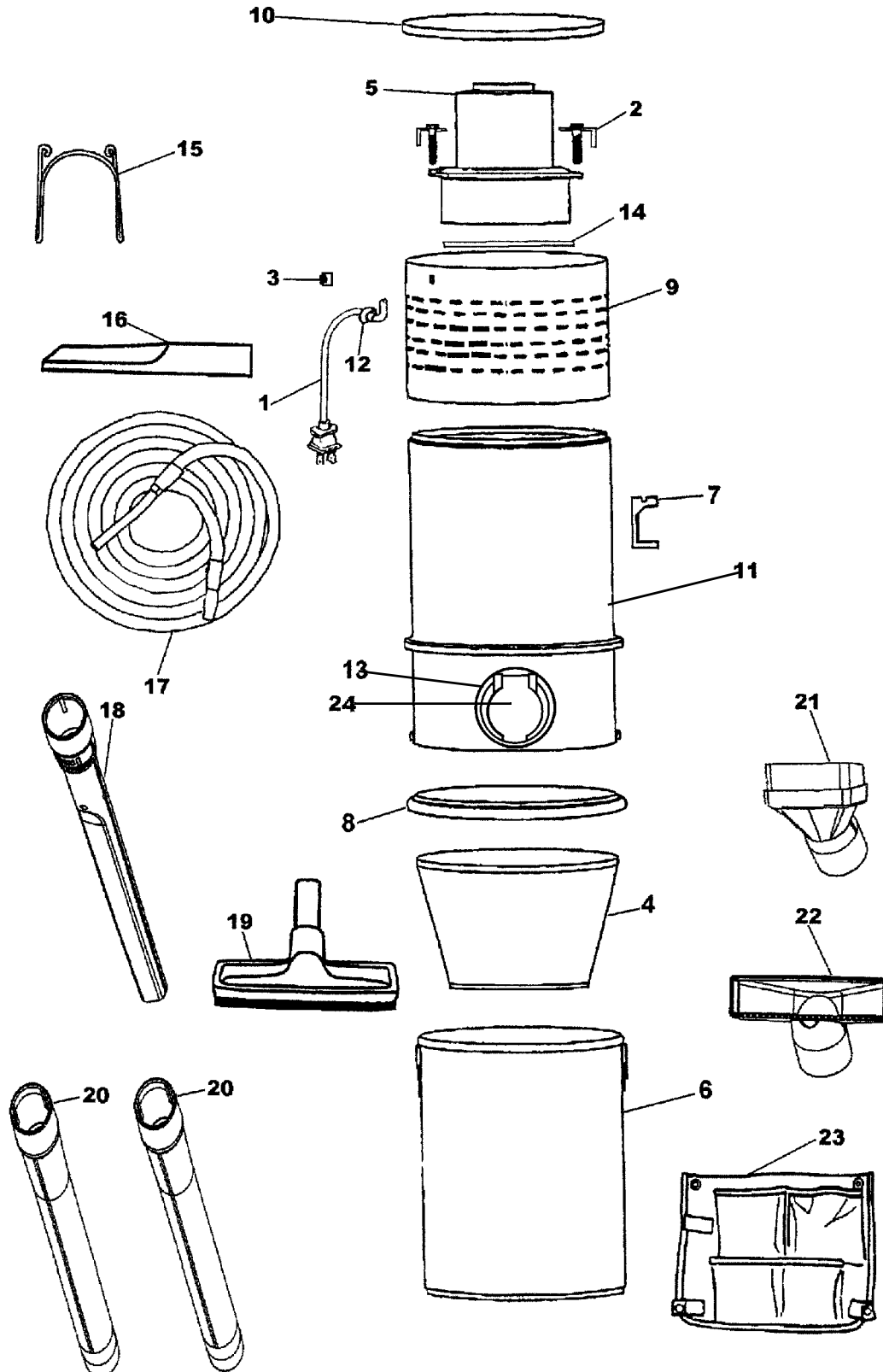


GUVTM

Garage Utility Vac

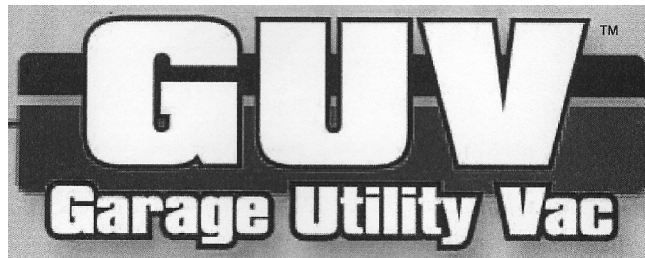
26

ASSEMBLY SCHEMATIC



MODEL NO.

L2310
L2315



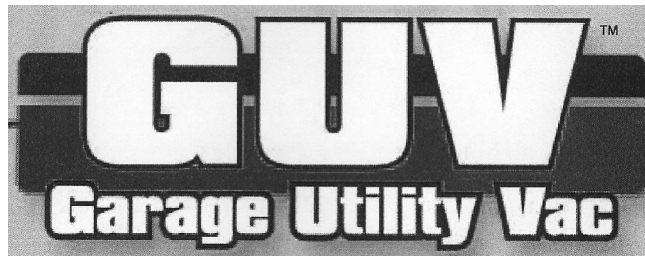
26

PART LISTING / PRICE LIST

MODEL No.

L2310
L2315

ITEM	PART NUMBER	MODELS TO FIT	PART DESCRIPTION	LIST COST
1	59644014	L2310, L2315	CORD ASSEMBLY	17.00
2	59644007	L2310	MOTOR BRACKET	2.82
	59644089	L2315	MOTOR BRACKET	PENDING
3	28161067	L2310, L2315	SWITCH	2.63
4	59644002	L2310, L2315	FILTER	58.79
5	43576224	L2310	MOTOR - REPLACED BY 59644088 AND 59644117	N.L.A.
	59644088	L2315	MOTOR - 10 AMP	59.96
6	59644008	L2310	BOTTOM DIRT CONTAINER ASSEMBLY - GREY	102.05
	59644090	L2315	BOTTOM DIRT CONTAINER ASSEMBLY - RED	PENDING
7	59132022	L2310	WALL BRACKET	13.60
	59132280	L2315	WALL BRACKET	PENDING
8	59132023	L2310	GASKET - 11.5"	9.74
	59644110	L2315	GASKET - 11.5"	4.55
9	59644012	L2310	SHROUD	63.49
	59644093	L2315	SHROUD	PENDING
10	59644009	L2310	COVER ASSEMBLY - GREY	N.L.A.
	59644095	L2315	COVER ASSEMBLY - RED	PENDING
11	59644010	L2310	BODY ASSEMBLY - GREY	90.71
	59644091	L2315	BODY ASSEMBLY - RED	PENDING
12	27482231	L2310	STRAIN RELIEF	1.12
	56944069	L2315	STRAIN RELIEF	N.A.
13	59132039	L2310, L2315	INTAKE GROMMET	4.53
14	59644016	L2310, L2315	SMALL GASKET - INCLUDED WITH #11	5.66
15	33188001	L2310	WIRE FRAME HOSE RACK	9.74
	59644061	L2315	WIRE FRAME HOSE RACK	PENDING
16	38617033	L2310, L2315	CREVICE TOOL - 7"	3.39
17	59644019	L2310	HOSE ASSEMBLY - 30'	79.37
	59644098	L2315	HOSE ASSEMBLY - 35'	83.40
18	38617031	L2310, L2315	CREVICE TOOL - LONG	5.66
19	43414196	L2310	HARD FLOOR BRUSH	36.01
	59644081	L2315	HARD FLOOR BRUSH - 14"	10.08
20	38634078	L2310, L2315	EXTENSION TUBE	6.79
21	43414197	L2310, L2315	DUSTING BRUSH ASSEMBLY - BLACK	2.68
22	38614044	L2310, L2315	FURNITURE NOZZLE	5.66



26

PART LISTING / PRICE LIST

MODEL NO.

L2310
L2315

ITEM	PART NUMBER	MODELS TO FIT	PART DESCRIPTION	LIST COST
23	59644021	L2310, L2315	TOOL CADDY	28.34
24	59644011	L2310, L2315	UTILITY VALVE / RETAINER RING COVER	15.87
	59644017	L2310, L2315	BAFFLE AND FOAM ASSEMBLY	10.20
	59644018	L2310, L2315	SCREW PACK - 4 SCREWS AND PLUGS	2.03
	59644106	L2315	MOTOR MOUNTING HARDWARE PACK - FOR 59644088 / 10 AMP MOTOR ORDER 59644117	N.A.
	59644107	L2315	MOUNTING BOLT HARDWARE PACK	PENDING
	59644117	L2310, L2315	MOTOR MOUNTING KIT - 10 AMP MOTOR 2 - 27618106 / WIRE CONNECTOR 1 - 36322030 / MOTOR MOUNT - SMALL 2 - 59644105 / LOCK WAHER - 1/4" ID 1 - 59644110 / MOTOR GASKET - 2.750" ID 1 - 59644111 / MOTOR BRACKET 2 - 59644113 / SCREW - 1/4" DIA 20 THD x 3/4" 1 - 59644114 / TCO 120 DEG C 1 - 59644115 / TIE WRAP 1 - 59644116 / SNAP-ON HUB	11.71