



*Fair™*  
bagless

*Fair™*  
bagless  
with powered nozzle

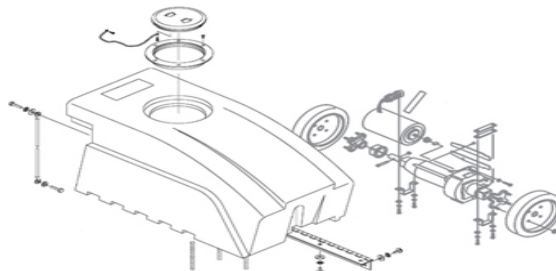
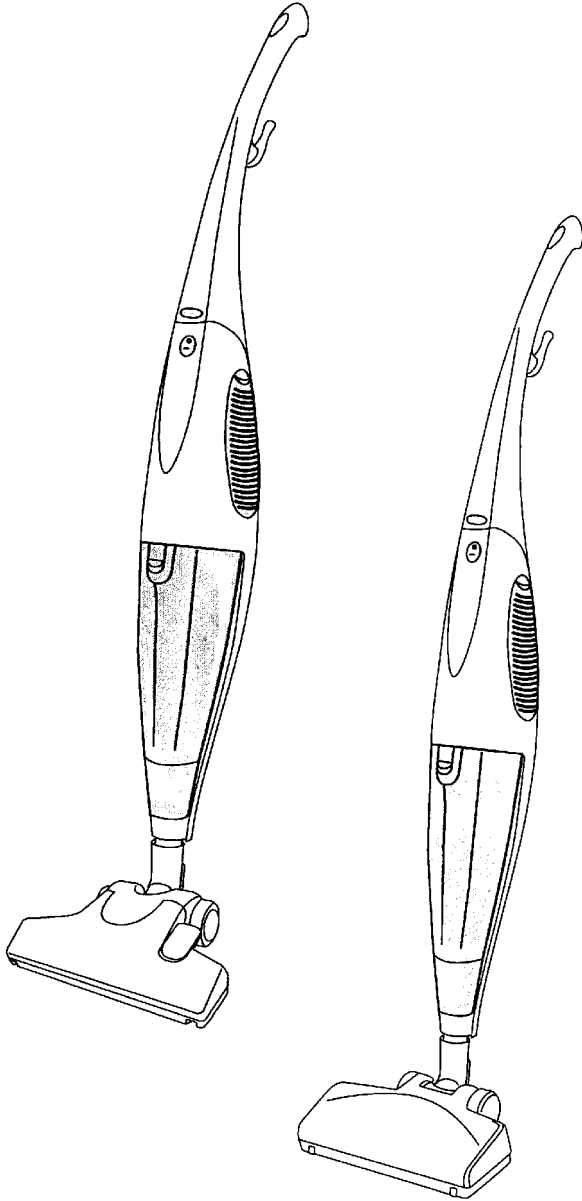
23

SECTION CONTENTS

<u>MODEL NO.</u>	<u>PAGE NO.</u>
S2200	23-2 THRU 23-4
S2220	23-2 THRU 23-4
S2220 P.N.	23-5 THRU 23-6

MODEL NO.

S2200  
S2220



**FLOOREQUIPMENTPARTS.COM**

- \* PRICING, SPECIFICATION'S, AND PRODUCT AVAILABILITY ARE SUBJECT TO CHANGE WITHOUT NOTICE. PRICING IS FOB FACTORY, CANTON, OH
- \* ALL INFORMATION CONTAINED WITHIN THIS SERVICE MANUAL IS PROPRIETARY INFORMATION OF TTI FLOOR CARE NORTH AMERICA.
- \* **WARNING:** TO REDUCE THE RISK OF ELECTRICAL SHOCK OR INJURY, ALWAYS DISCONNECT THE APPLIANCE CORD FROM THE ELECTRICAL OUTLET OR REMOVE BATTERY PRIOR TO SERVICING THE UNIT.



Flair™  
bagless

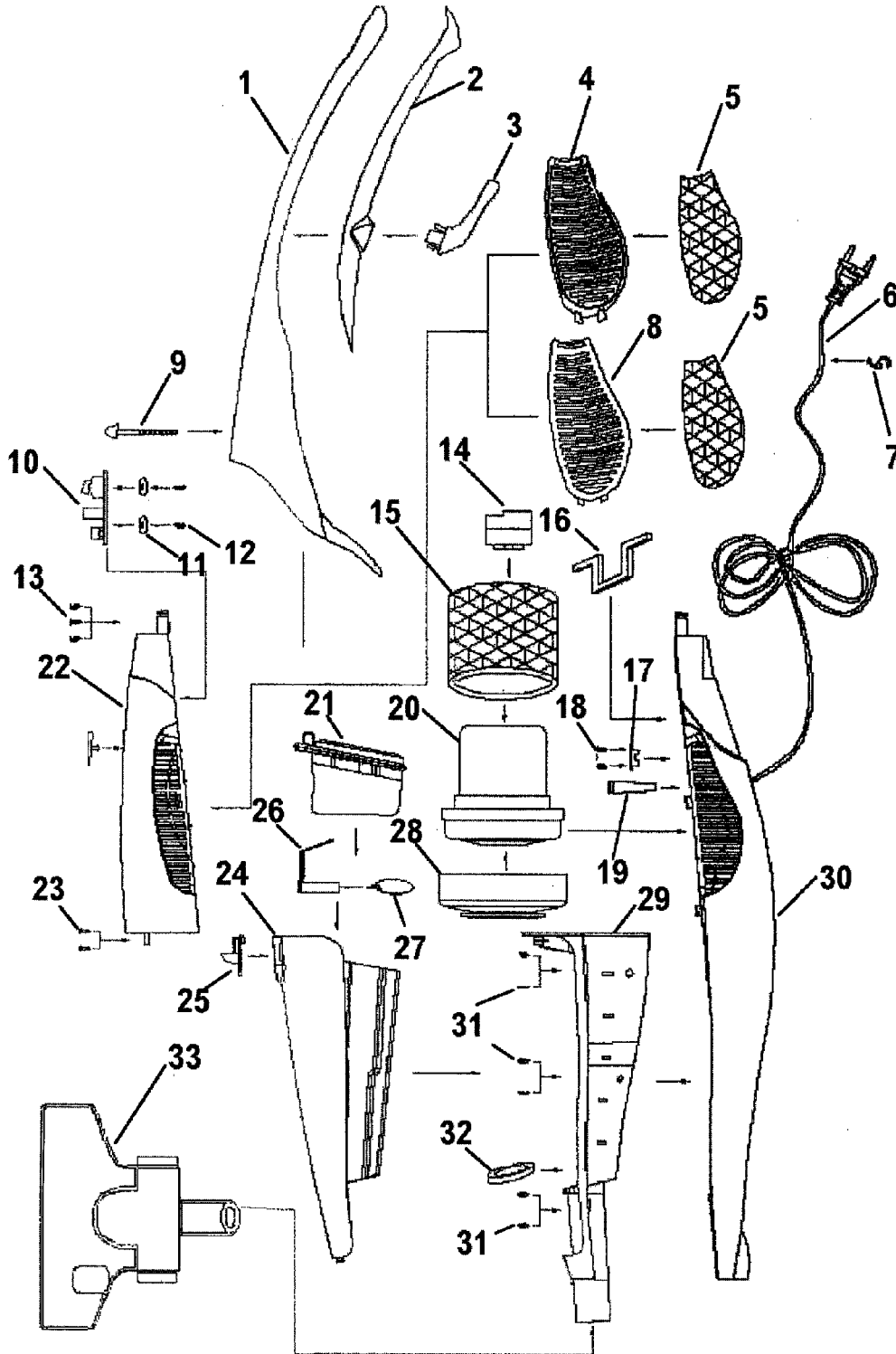
Flair™  
bagless  
with powered nozzle

23

ASSEMBLY SCHEMATIC

MODEL NO.

S2200  
S2220





23

**PART LISTING / PRICE LIST**

MODEL No.

S2200  
S2220

ITEM	PART NUMBER	MODELS To FIT	PART DESCRIPTION	LIST COST
1	59136060	S2200	UPPER HANDLE - GRAPHITE SILVER METALLIC	6.79
	59136161	S2220	UPPER HANDLE - LASER RED METALLIC	6.79
2		S2200, S2220	UPPER HANDLE BACK - <b>ORDER #1</b>	N.A.
3	59136011	S2200	CORD HOOK	1.12
	59136152	S2220	CORD HOOK	1.12
4	59136009	S2200	AIR OUTLET GRID - RIGHT	1.12
	59136155	S2220	AIR OUTLET GRID - RIGHT	1.12
5	59136022	S2200, S2220	AIR OUTLET FILTER	2.09
6	59136052	S2200, S2220	POWER CORD WITH PROTECTOR	9.96
7		S2200, S2220	S-CLIP FOR POWER CORD	N.A.
8	59136010	S2200	AIR OUTLET GRID - LEFT	1.12
	59136156	S2220	AIR OUTLET GRID - LEFT	1.12
9	59136059	S2200	FINGER BOLT - UPPER HANDLE	1.12
	59136157	S2220	FINGER BOLT - UPPER HANDLE	1.12
10	59136035	S2200	CIRCUIT BOARD	5.66
	59136006	S2220	CIRCUIT BOARD - SWITCH	7.36
11	59136057	S2200, S2220	WASHER	.58
12	59136015	S2200, S2220	SCREW	N.L.A.
13	59136015	S2200, S2220	SCREW	N.L.A.
14	59136013	S2200, S2220	MOTOR FIX RING - SMALL	2.26
15	59136024	S2200, S2220	MOTOR SOUND INSULATION	1.46
16	59136012	S2200, S2220	MOTOR SEAL / CHAMBER SEAL	1.12
17	59136061	S2200, S2220	POWER CORD FIXING BOARD	1.12
18	59136015	S2200, S2220	SCREW	N.L.A.
19	59136051	S2200, S2220	POWER CORD PROTECTOR	1.12
20	59136023	S2200, S2220	MOTOR	28.34
21	59136055	S2200, S2220	PRIMARY BAG FILTER	5.24
22	59136056	S2200	FRONT COVER	4.53
	59136158	S2220	FRONT COVER	4.53
23	59136015	S2200, S2220	SCREW	N.L.A.
24	59136054	S2200, S2220	DIRT CUP ASSEMBLY	9.06
25		S2200, S2220	LATCH - <b>ORDER #24</b>	N.A.
26		S2200, S2220	DUST BOARD - <b>ORDER #24</b>	N.A.
27		S2200, S2220	RUBBER FLAP - <b>ORDER #24</b>	N.A.
28	59136014	S2200, S2220	MOTOR SEAL	2.26



23

PART LISTING / PRICE LIST

ITEM	PART NUMBER	MODELS TO FIT	PART DESCRIPTION	LIST COST
29	59136058	S2200	MIDDLE HOUSING WITH GASKET	8.61
	59136159	S2220	MIDDLE HOUSING WITH GASKET	8.61
30	59136007	S2200	REAR COVER / LOWER HANDLE	8.61
	59136154	S2220	REAR COVER / LOWER HANDLE	8.61
31	59136015	S2200, S2220	SCREW	N.L.A.
32	59136045	S2200, S2220	FRONT SEALING - DIRT CUP	1.12
33	59136026	S2200	FLOOR NOZZLE COMPLETE	9.74
	59136049	S2200	FLOOR NOZZLE BRUSH	1.12
	59136162	S2220	POWER NOZZLE COMPLETE	32.20

MODEL No.

S2200

S2220



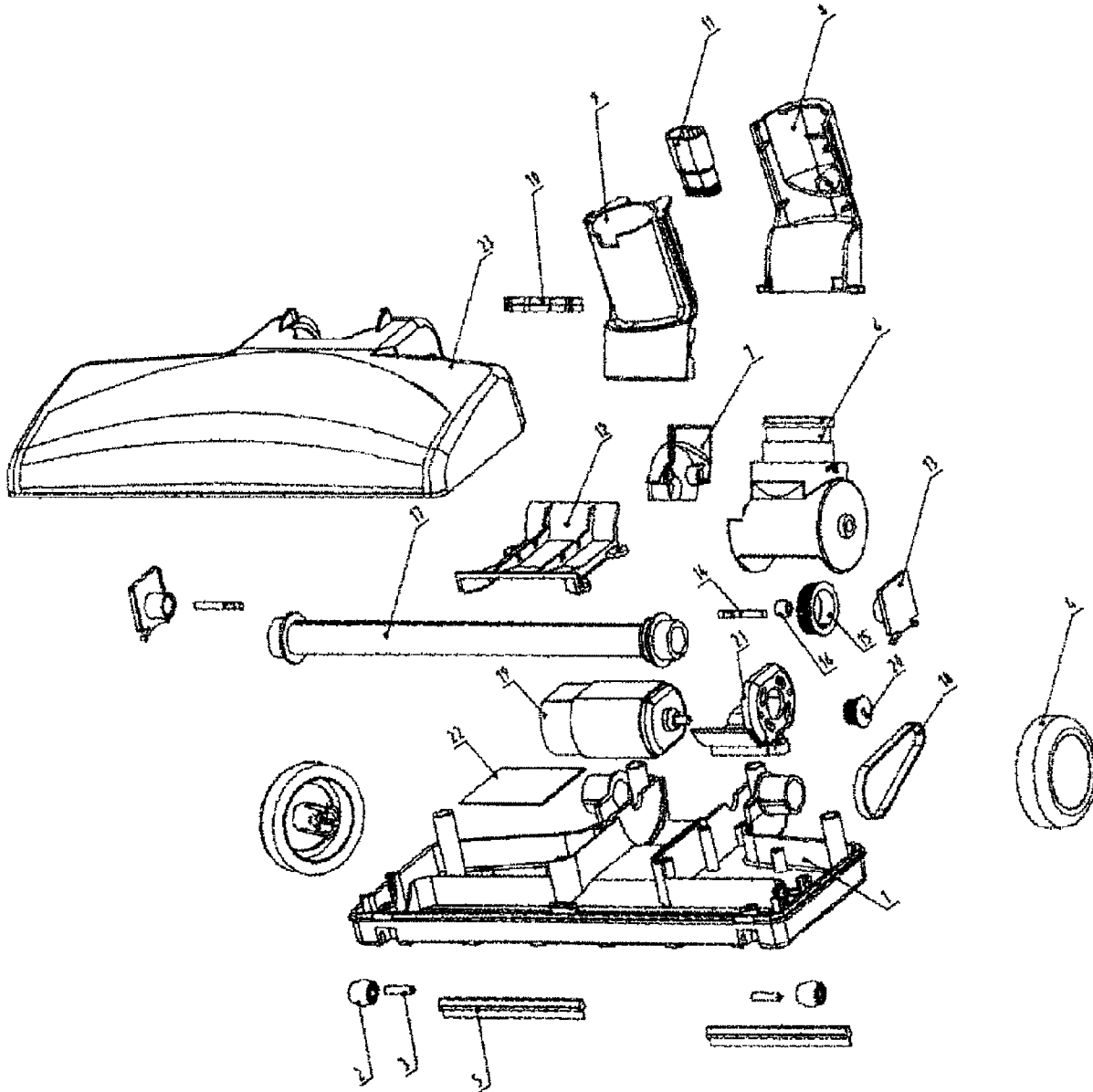
Flair™  
bagless  
with powered nozzle

23

ASSEMBLY SCHEMATIC

MODEL NO.

S2220  
P.N.





23

PART LISTING / PRICE LIST

MODEL No.

S2220  
P.N.

ITEM	PART NUMBER	MODELS TO FIT	PART DESCRIPTION	LIST COST
1	59136166	S2220	BASE ASSEMBLY	5.66
2	59136174	S2220	FRONT WHEEL	1.12
3	59136075	S2220	FRONT WHEEL SHAFT	1.12
4		S2220	REAR WHEEL - ORDER #1	N.A.
5		S2220	RUBBER STRIP - ORDER #1	N.A.
6	59136170	S2220	NOZZLE CONNECTOR	8.61
7		S2220	ORDER #6	N.A.
8		S2220	ORDER #6	N.A.
9		S2220	ORDER #6	N.A.
10		S2220	ORDER #6	N.A.
11		S2220	ORDER #6	N.A.
12	59136169	S2220	AIR INLET COVER	1.12
13	59136163	S2220	AGITATOR / BRUSH ROLL ASSEMBLY	6.79
14		S2220	ORDER #13	N.A.
15		S2220	ORDER #13	N.A.
16		S2220	ORDER #13	N.A.
17		S2220	ORDER #13	N.A.
18	59136167	S2220	BELT	2.40
19	59136165	S2220	MOTOR	20.86
20		S2220	ORDER #19	N.A.
22	59136168	S2220	MOTOR FIXING CUSHION	1.12
23	59136171	S2220	HOOD / NOZZLE COVER	5.43
	59136172	S2220	SCREW	1.14
	59136173	S2220	SCREW	1.12
	59136176	S2220	PCB - NOZZLE	6.00
	59136162	S2220	COMPLETE POWER NOZZLE ASSEMBLY	32.20