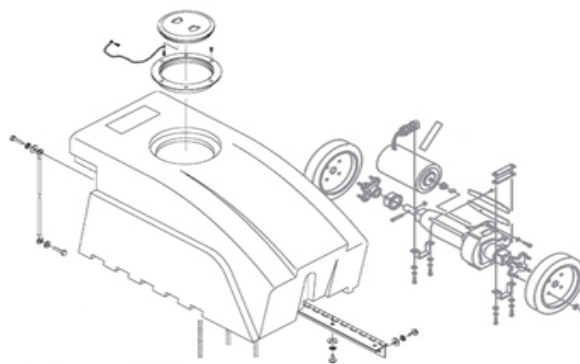
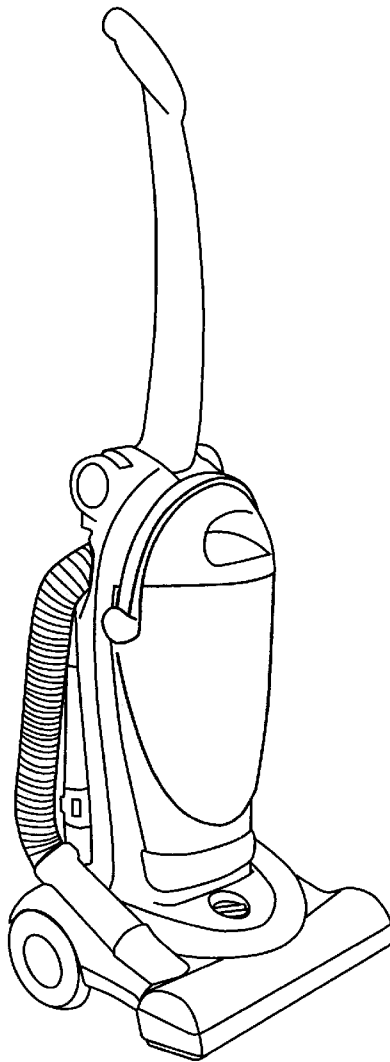


SECTION CONTENTS

<u>MODEL No.</u>	<u>PAGE No.</u>
U5172-900	2-2 THRU 2-6
U5175-900	2-2 THRU 2-6

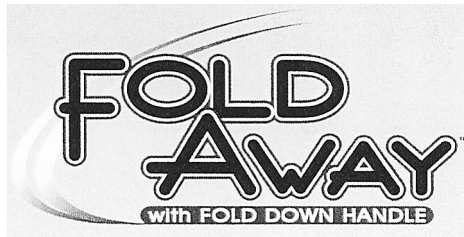
MODEL No.

U5172-900
U5175-900



FLOOREQUIPMENTPARTS.COM

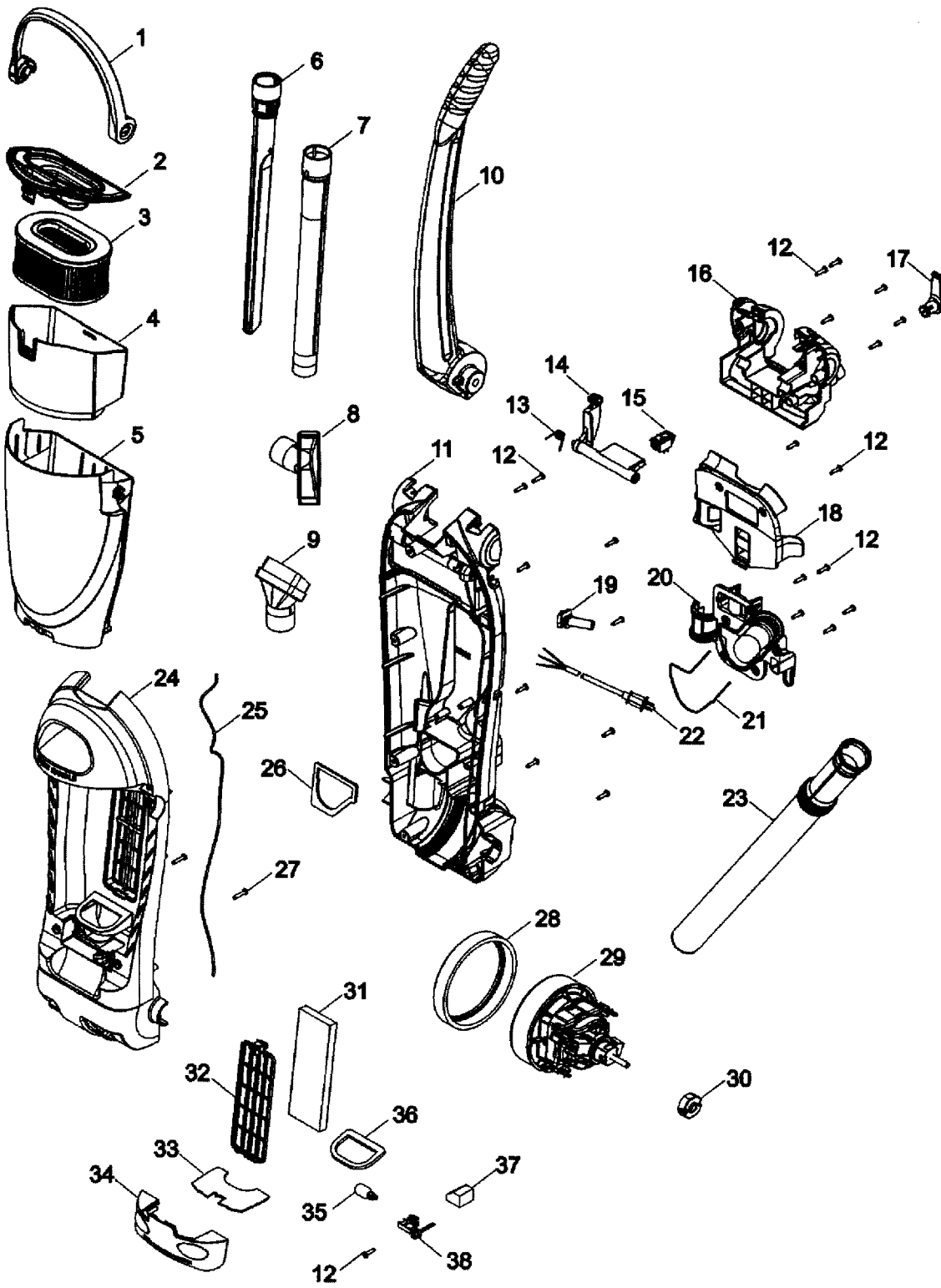
- * PRICING, SPECIFICATION'S, AND PRODUCT AVAILABILITY ARE SUBJECT TO CHANGE WITHOUT NOTICE. PRICING IS FOB FACTORY, CANTON, OH
- * ALL INFORMATION CONTAINED WITHIN THIS SERVICE MANUAL IS PROPRIETARY INFORMATION OF TTI FLOOR CARE NORTH AMERICA.
- * **WARNING:** TO REDUCE THE RISK OF ELECTRICAL SHOCK OR INJURY, ALWAYS DISCONNECT THE APPLIANCE CORD FROM THE ELECTRICAL OUTLET OR REMOVE BATTERY PRIOR TO SERVICING THE UNIT.

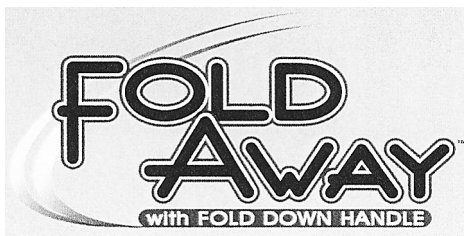


2

ASSEMBLY SCHEMATIC

MODEL NO.
U5172-900
U5175-900





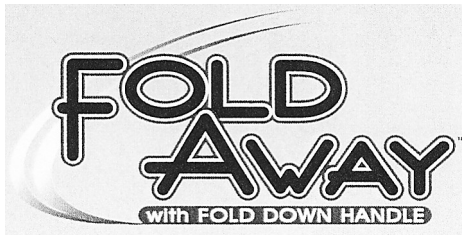
2

PART LISTING / PRICE LIST

MODEL No.

U5172-900
U5175-900

ITEM	PART NUMBER	MODELS TO FIT	PART DESCRIPTION	LIST COST
1	39457045	U5172-900, U5175-900	DIRT CUP CARRY HANDLE	2.26
2	37249037	U5172-900, U5175-900	DIRT CUP LID WITH SEAL	3.39
3	40130050	U5172-900, U5175-900	CARTRIDGE FILTER	6.99 NON DISC
4	36426065	U5172-900, U5175-900	FILTER SUPPORT	7.93
5	38775098	U5172-900, U5175-900	DIRT CUP	34.01
6	38617031	U5172-900, U5175-900	CREVICE TOOL - LONG	5.66
7	38634092	U5172-900, U5175-900	EXTENSION TUBE 14"	7.36
8	38614044	U5172-900, U5175-900	FURNITURE NOZZLE	5.66
9	43414197	U5172-900, U5175-900	DUSTING BRUSH ASSEMBLY - BLACK	2.68
10	39453001	U5172-900, U5175-900	UPPER HANDLE ASSEMBLY	9.06
11	37255035	U5172-900, U5175-900	REAR BODY HOUSING	20.40
12	21447242	U5172-900, U5175-900	SCREW - SELF TAPPING	1.12
13	38355016	U5172-900, U5175-900	PIVOT LATCH SPRING	1.12
14	92001063	U5172-900, U5175-900	PIVOT LATCH LEVER	1.46
15	28161067	U5172-900, U5175-900	SWITCH	2.63
16	37258161	U5172-900, U5175-900	HANDLE RETAINER COVER	3.39
17	39442048	U5172-900, U5175-900	CORD WRAP - MAGNESIUM GRAY	1.14
18	36433182	U5172-900, U5175-900	UPPER TOOL HOLDER	2.03
19	36215028	U5172-900, U5175-900	CORD PROTECTOR	1.81
20	36433181	U5172-900, U5175-900	LOWER TOOL HOLDER	1.81
21	38781076	U5172-900, U5175-900	ROPE SEAL GASKET	1.12
22	91001196	U5172-900, U5175-900	POWER CORD	8.49
23	43431224	U5172-900, U5175-900	HOSE ASSEMBLY	17.00
24	37254235	U5172-900	FRONT HOUSING - EMERALD	N.L.A.
	37254246	U5175-900	FRONT HOUSING - OYSTER WHITE	N.L.A.
	92001016	U5172-900, U5175-900	FRONT HOUSING - IRIS BLUE	.50
25	28382094	U5172-900, U5175-900	THERMAL PROTECTOR	7.48
26	38783032	U5172-900, U5175-900	DUCT SEAL	1.12
27	214793DA	U5172-900, U5175-900	SCREW	.57
28	36322037	U5172-900, U5175-900	MOTOR MOUNT - LARGE	2.59
29	27212057	U5172-900, U5175-900	MOTOR ASSEMBLY COMPLETE	62.09
30	36322030	U5172-900, U5175-900	MOTOR MOUNT - SMALL	1.12
31	38766008	U5172-900, U5175-900	FINAL / EXHAUST FILTER	1.21
32	36426061	U5172-900, U5175-900	FINAL / EXHAUST FILTER RETAINER	1.12



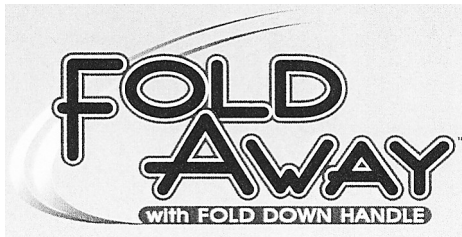
2

PART LISTING / PRICE LIST

ITEM	PART NUMBER	MODELS TO FIT	PART DESCRIPTION	LIST COST
33	37248005	U5172-900, U5175-900	BULB ACCESS DOOR	1.12
34	39383118	U5172-900, U5175-900	DIRT FINDER LENS	2.26
35	27313107	U5172-900, U5175-900	BULB	3.09
36	38785019	U5172-900, U5175-900	INLET SEAL	2.26
37	34131019	U5172-900, U5175-900	WIRE OPENING PLUG	1.12
38	93001830	U5172-900, U5175-900	LAMP SOCKET ASSEMBLY	N.L.A.
	92001018	U5172-900	WIRING HARNESS ASSEMBLY	N.L.A.
	47173040	U5175-900	WIRING HARNESS ASSEMBLY	4.53
	34131010	U5172-900, U5175-900	PLUG	1.12
	21447269	U5172-900, U5175-900	SCREW	.57
	27618508	U5172-900, U5175-900	WIRE CONNECTOR	1.12
	49811117	U5172-900, U5175-900	LEAD WIRE - PURPLE	1.12
	43434042	U5172-900, U5175-900	EXTRA HOSE ASSEMBLY - 20'	34.01

MODEL No.

U5172-900
U5175-900



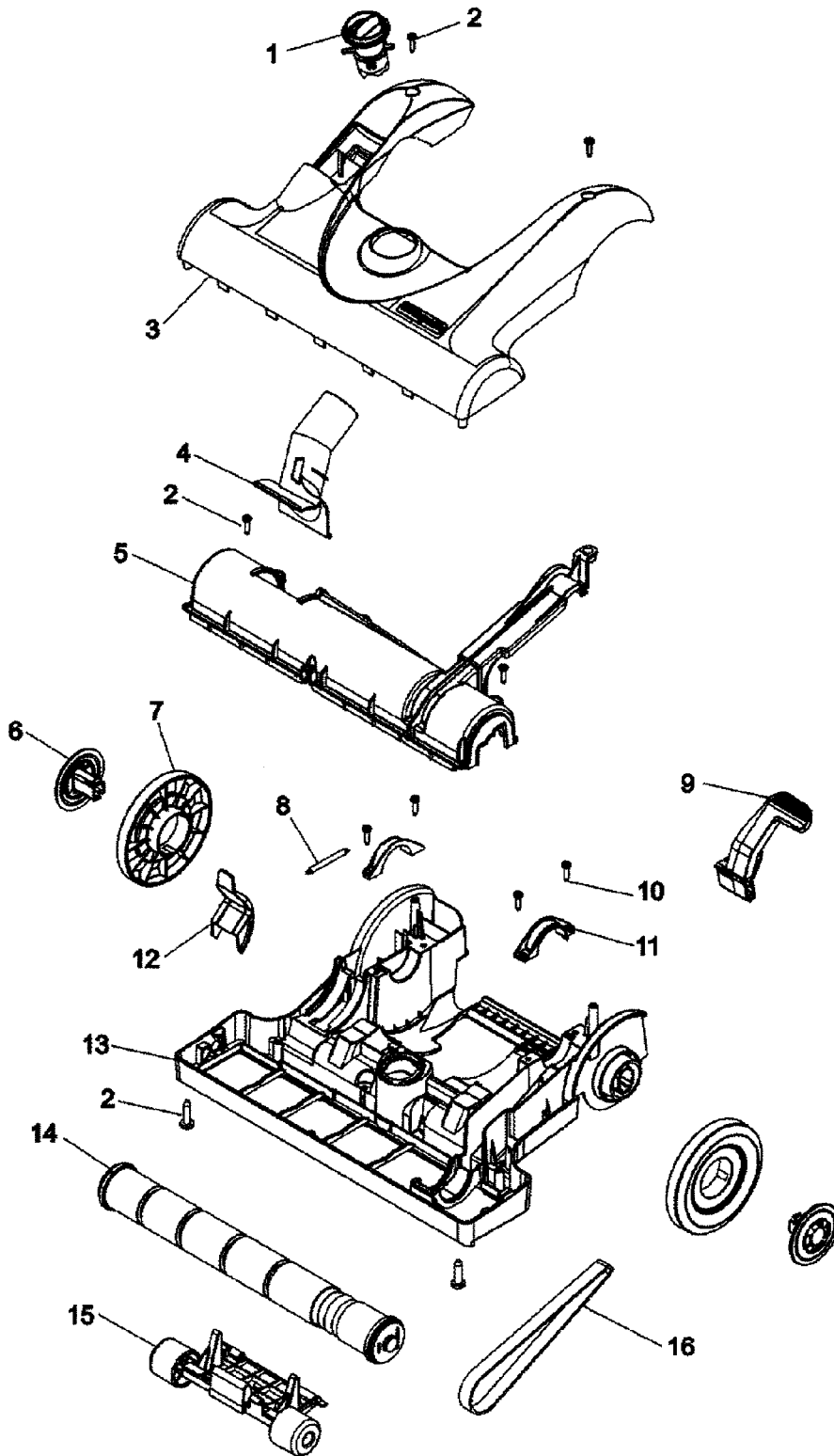
2

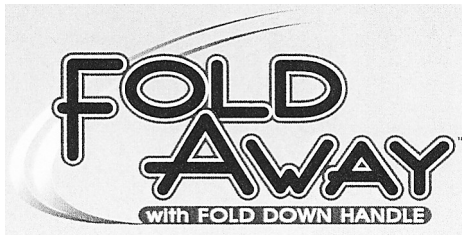
ASSEMBLY SCHEMATIC

MODEL NO.

U5172-900

U5175-900





2

PART LISTING / PRICE LIST

MODEL No.

U5172-900
U5175-900

ITEM	PART NUMBER	MODELS TO FIT	PART DESCRIPTION	LIST COST
1	38562022	U5172-900, U5175-900	NOZZLE HEIGHT ADJUSTMENT CAM	1.46
2	21447072	U5172-900, U5175-900	SCREW	.57
3	37253A20	U5172-900	HOOD / NOZZLE COVER - EMERALD	6.93
	92001256	U5172-900	HOOD / NOZZLE COVER - SUB / EMERALD	8.49
	37253A43	U5175-900	HOOD / NOZZLE COVER - OYSTER WHITE	15.87
	51351013	U5172-900, U5175-900	NAME PLATE	2.59
4	38646085	U5172-900, U5175-900	LOWER DUCT	1.12
5	37243044	U5172-900, U5175-900	AGITATOR HOUSING	5.66
6	37912018	U5172-900, U5175-900	WHEEL HUB	1.12
7	38522086	U5172-900, U5175-900	REAR WHEEL	2.26
8	38335026	U5172-900, U5175-900	DEBRIS DOOR SPRING	1.12
9	38458070	U5172-900, U5175-900	HANDLE RELEASE LEVER	2.26
10	21447242	U5172-900, U5175-900	SCREW - SELF TAPPING	1.12
11	36131118	U5172-900, U5175-900	TRUNNION COVER	1.12
12	37257312	U5172-900, U5175-900	DEBRIS DOOR	1.12
13	92001255	U5172-900	MAIN BODY BASE - DARK CHARCOAL GRAY	14.16
	37242142	U5175-900	MAIN BODY BASE - MAGNESIUM GRAY	19.18
14	48414132	U5172-900, U5175-900	AGITATOR / BRUSH ROLL	22.67
15	90001005	U5172-900, U5175-900	FRONT WHEEL ASSEMBLY	4.53
16	38528040	U5172-900, U5175-900	BELT - 1 PER PACK	2.93