



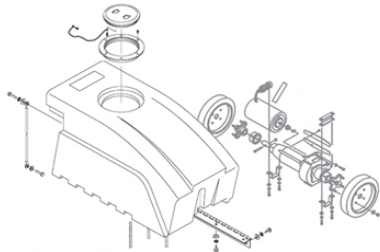
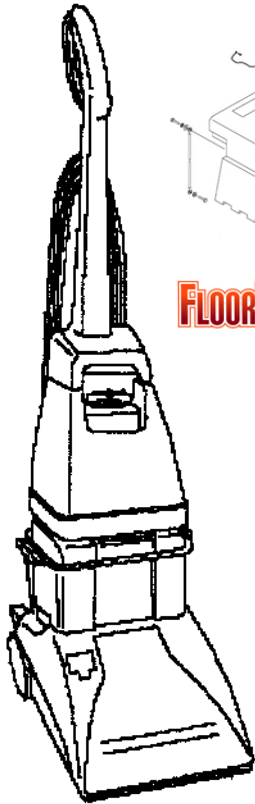
SteamVac™



SteamVac™
with
CLEAN
SURGE™

15

SteamVac™
agility STEAM VAC™
DUAL V™ STEAM VAC™
ALL TERRAIN



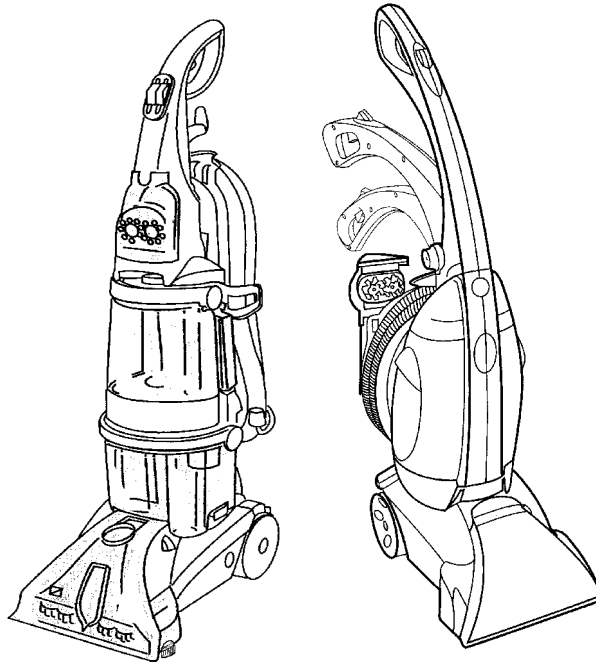
FLOOREQUIPMENTPARTS.COM

SECTION CONTENTS

<u>MODEL No.</u>	<u>PAGE No.</u>
F5810	15-2 THRU 15-4
F5914-900	15-5 THRU 15-9
F5915-900	15-5 THRU 15-9
F5917-900	15-5 THRU 15-9
F5918-900	15-5 THRU 15-9
FH50045	15-5 THRU 15-9
F6207-900	15-10 THRU 15-15
F6212-900	15-10 THRU 15-15
F6215-900	15-10 THRU 15-15
F7222-900	15-16 THRU 15-24
F7452-900	15-16 THRU 15-24

MODEL No.

F5810
F5914-900
F5915-900
F5917-900
F5918-900
F6207-900
F6212-900
F6215-900
F7222-900
F7452-900
FH50045



* PRICING, SPECIFICATION'S, AND PRODUCT AVAILABILITY ARE SUBJECT TO CHANGE WITHOUT NOTICE. PRICING IS FOB FACTORY, CANTON, OH

* ALL INFORMATION CONTAINED WITHIN THIS SERVICE MANUAL IS PROPRIETARY INFORMATION OF TTI FLOOR CARE NORTH AMERICA.

* **WARNING:** TO REDUCE THE RISK OF ELECTRICAL SHOCK OR INJURY, ALWAYS DISCONNECT THE APPLIANCE CORD FROM THE ELECTRICAL OUTLET OR REMOVE BATTERY PRIOR TO SERVICING THE UNIT.



**STEAM VAC™
DUAL V™**

**STEAM VAC™
ALL TERRAIN**

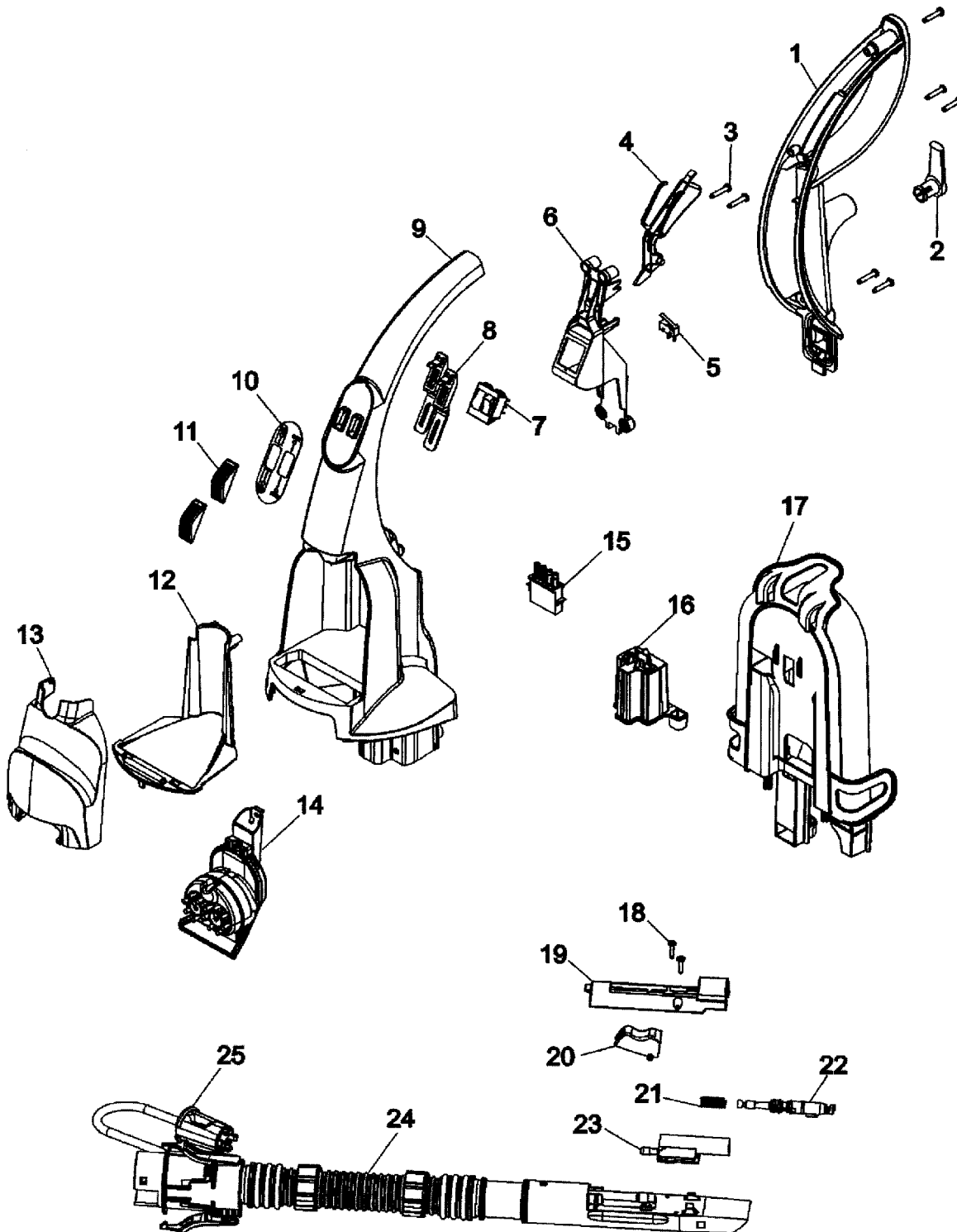
15

ASSEMBLY SCHEMATIC

MODEL NO.

F7222-900

F7452-900





**STEAM VAC™
DUAL V™**

**STEAM VAC™
ALL TERRAIN**

15

PART LISTING / PRICE LIST

MODEL No.

F7222-900
F7452-900

ITEM	PART NUMBER	MODELS TO FIT	PART DESCRIPTION	LIST COST
1	92001302	F7222-900, F7452-900	UPPER HANDLE - REAR	3.96
	40201243	F7222-900, F7452-900	HANDLE HARDWARE ASSEMBLY	1.46
2	39442055	F7222-900, F7452-900	CORD WRAP	.88
3	21447072	F7222-900, F7452-900	SCREW	.57
4	38434030	F7222-900, F7452-900	CONTROL LEVER	1.69
5	28218051	F7222-900, F7452-900	MICRO SWITCH	4.53
6	36436023	F7222-900, F7452-900	UPPER HANDLE SUPPORT	N.L.A.
7	28267003	F7222-900, F7452-900	SWITCH - DOUBLE ROCKER	5.66
8	38458065	F7222-900, F7452-900	SWITCH ROD	1.12
9	39466118	F7222-900	UPPER HANDLE w/TOOL CADDY - FRONT	11.33
	92001303	F7452-900	UPPER HANDLE w/TOOL CADDY - FRONT	11.33
10	52313107	F7222-900	LABEL	2.26
	52313108	F7452-900	LABEL	2.26
11	38421114	F7222-900	INDICATOR KNOB	.53
	92001305	F7452-900	SWITCH BUTTON	1.46
12	36433227	F7222-900, F7452-900	TOOL HOLDER	2.10
13	92001307	F7222-900, F7452-900	TOOL HOLDER COVER	3.16
14	91001197	F7222-900, F7452-900	TURBINE NOZZLE	34.01
	48437028	F7452-900	SCRUB MODULE	21.54
15	46658005	F7222-900, F7452-900	UPPER HANDLE SUPPLY SWITCH	14.73
16		F7222-900, F7452-900	WIRE COVER	N.A.
17	92001281	F7222-900, F7452-900	CADDY BODY	15.87
18	21447239	F7222-900, F7452-900	SCREW	.57
19		F7222-900, F7452-900	WAND COVER	N.A.
20	38433074	F7222-900, F7452-900	TRIGGER	1.12
21	38312019	F7222-900, F7452-900	SPRING	1.12
22	43412007	F7222-900, F7452-900	NOZZLE AND VALVE ASSEMBLY	4.53
23	91001060	F7222-900, F7452-900	WAND VALVE ASSEMBLY - LARGER NIPPLE	1.69
24	91001063	F7222-900, F7452-900	HOSE ASSEMBLY - CLEAR / LATCH IN STYLE	26.64
25	43513010	F7222-900, F7452-900	CONNECTOR COUPLER	3.73



**STEAM VAC™
DUAL V™**

**STEAM VAC™
ALL TERRAIN**

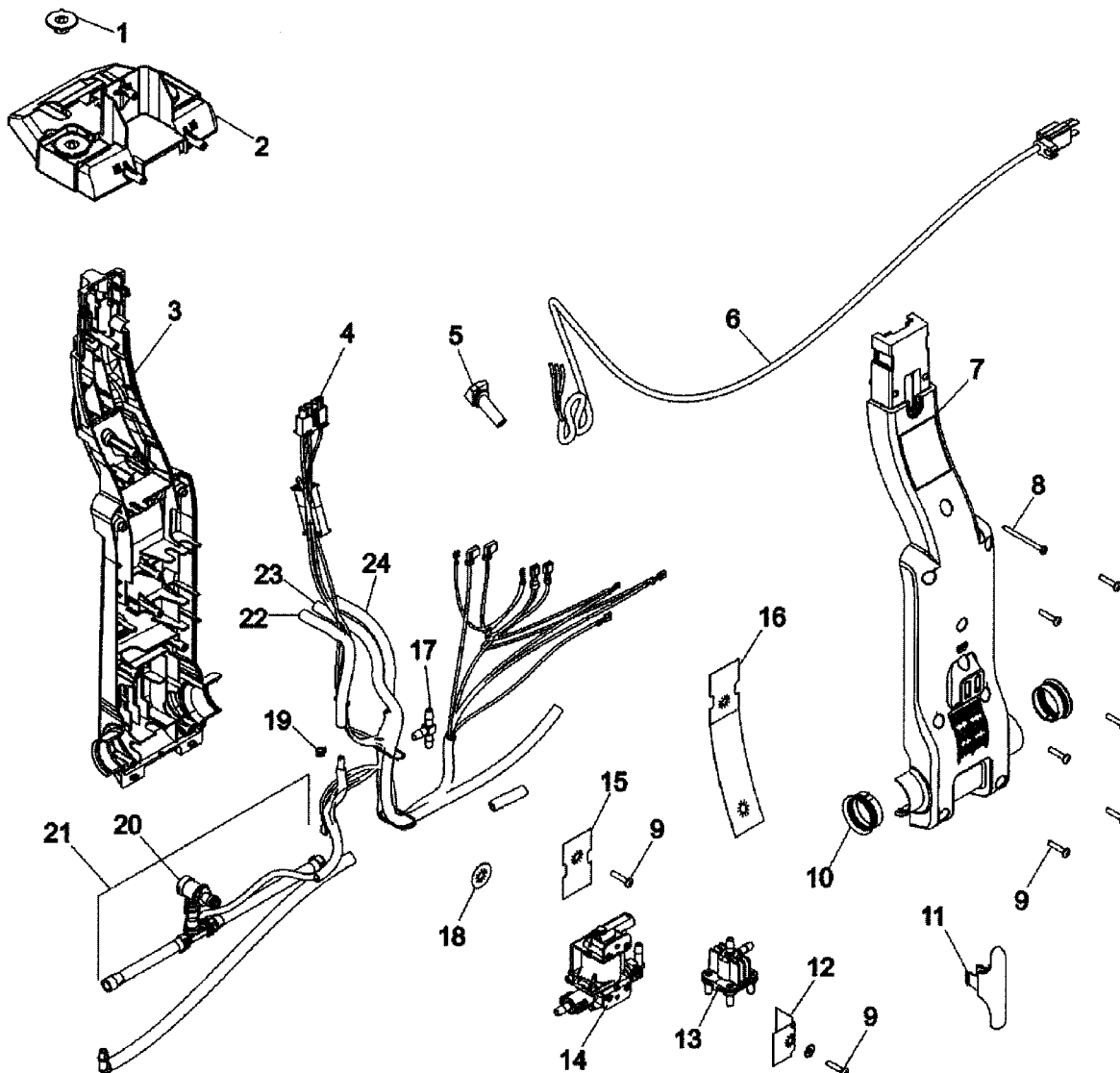
15

ASSEMBLY SCHEMATIC

MODEL NO.

F7222-900

F7452-900





STEAM VAC™
DUAL V™

STEAM VAC™
ALL TERRAIN

15

PART LISTING / PRICE LIST

MODEL No.

F7222-900
F7452-900

ITEM	PART NUMBER	MODELS TO FIT	PART DESCRIPTION	LIST COST
1	38764042	F7222-900	METERING PLATE	2.26
	92001310	F7452-900	METERING PLATE	2.26
2	41423024	F7222-900, F7452-900	TANK SUPPORT ASSEMBLY	11.33
3	92001311	F7222-900, F7452-900	LOWER HANDLE - FRONT	5.09
4	46658003	F7222-900	WIRING HARNESS ASSEMBLY	17.00
	46658004	F7452-900	WIRING HARNESS ASSEMBLY	27.21
5	36215028	F7222-900, F7452-900	CORD PROTECTOR	1.81
6	91001198	F7222-900, F7452-900	POWER CORD ASSEMBLY	18.70
7		F7222-900, F7452-900	LOWER HANDLE - REAR	N.A.
8	21447019	F7222-900, F7452-900	SCREW	.57
9	21447269	F7222-900, F7452-900	SCREW	.57
10	32456001	F7222-900, F7452-900	TRUNNON SLEEVE	1.12
11	92001313	F7222-900, F7452-900	CORD HOOK - HOSE	1.12
12	34264006	F7222-900, F7452-900	INSULATOR	1.12
13	43513013	F7222-900, F7452-900	PRESSURE VALVE ASSEMBLY	11.33
14	43582011	F7222-900, F7452-900	PUMP ASSEMBLY - SOLENOID	27.21
15	34264006	F7222-900, F7452-900	INSULATOR	1.12
16	34285001	F7222-900, F7452-900	INSULATOR	1.12
17	38681010	F7222-900, F7452-900	T CONNECTOR	1.12
18	34264007	F7222-900, F7452-900	INSULATOR	1.12
19	25411015	F7222-900, F7452-900	HOSE CLAMP	1.12
20	43523004	F7222-900, F7452-900	QUICK DISCONNECT ASSEMBLY	5.24
21	43491046	F7222-900, F7452-900	QUICK DISCONNECT TUBING	17.00
22	90001101	F7222-900, F7452-900	TUBING - 6.75" LONG	1.13
23	66173013	F7222-900, F7452-900	TUBING - 22.25" LONG	2.59
24	90001101	F7222-900, F7452-900	TUBING - 6.75" LONG	1.13

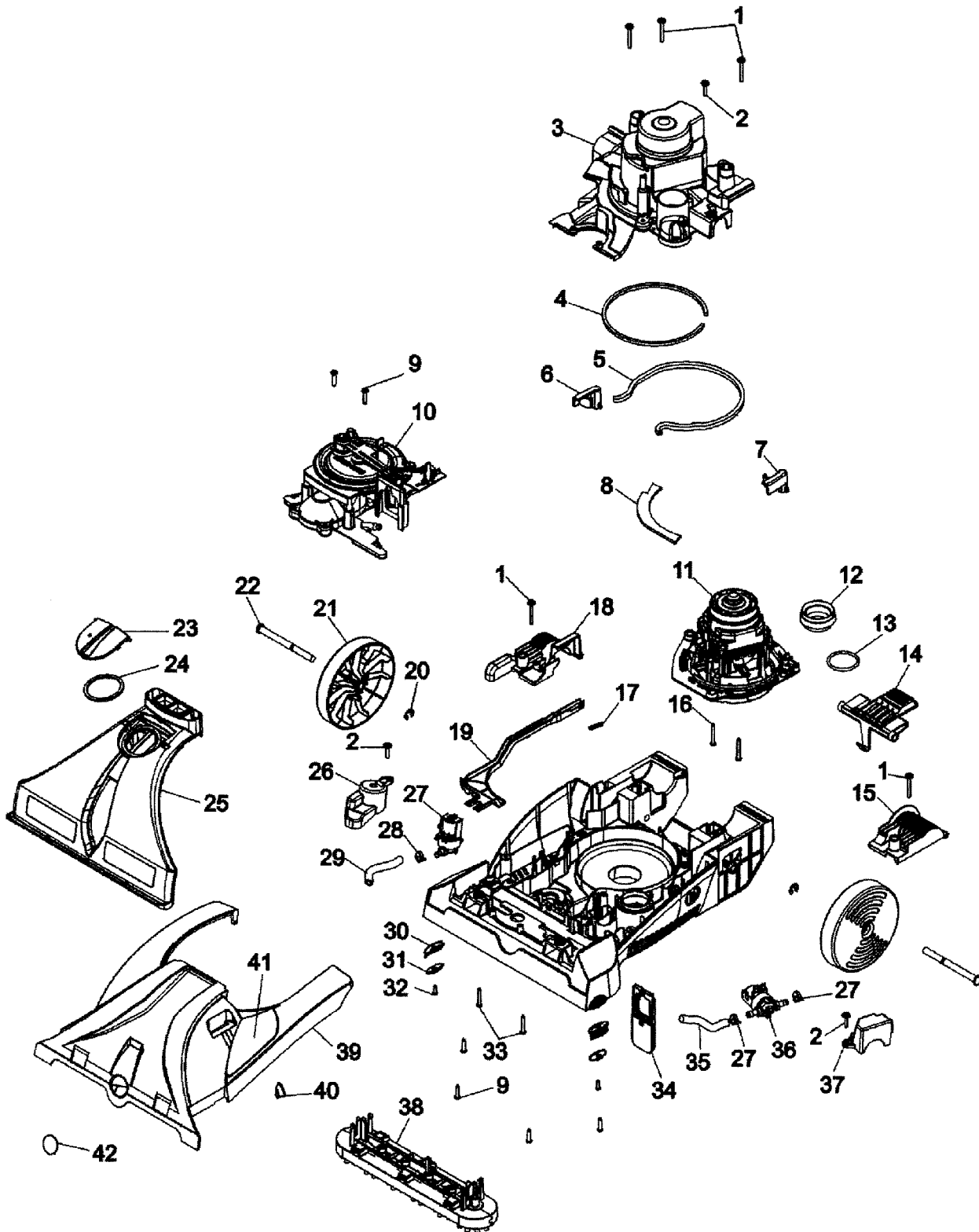


**STEAM VAC™
DUAL V™**

**STEAM VAC™
ALL TERRAIN**

15

ASSEMBLY SCHEMATIC



MODEL NO.

F7222-900

F7452-900



STEAM VAC™
DUAL V™

STEAM VAC™
ALL TERRAIN

15

PART LISTING / PRICE LIST

MODEL No.

F7222-900
F7452-900

ITEM	PART NUMBER	MODELS TO FIT	PART DESCRIPTION	LIST COST
1	23149004	F7222-900, F7452-900	TAPPING SCREW WITH WASHER	.40
2	23149002	F7222-900, F7452-900	SCREW - SELF TAPPING	.57
3	37196196	F7222-900	MOTOR COVER	PENDING
		F7452-900	MOTOR COVER	N.A.
4	34113004	F7222-900, F7452-900	MOTOR SEAL	1.12
5	38781067	F7222-900, F7452-900	BASE MOTOR SEAL	2.26
6	92001319	F7222-900, F7452-900	DIRTY WATER TANK LATCH - LEFT	1.46
7	36153098	F7222-900, F7452-900	DIRTY WATER TANK LATCH - RIGHT BLACK	.87
8	38781074	F7222-900, F7452-900	INNER SEAL	1.12
9	21447217	F7222-900, F7452-900	SCREW - SELF TAPPING	1.12
10	43191009	F7222-900	TURBINE AND GEAR ASSEMBLY - 5 BRUSH MODELS PRIOR TO 12/02 KEEP CAP ON MODELS 12/02 AND AFTER REMOVE CAP ONE PORT ASSEMBLY	41.95
	43191011	F7222-900	TURBINE AND GEAR ASSEMBLY - 5 BRUSH MODELS PRIOR TO 12/02 KEEP CAP ON MODELS 12/02 AND AFTER REMOVE CAP TWO PORT ASSEMBLY	27.67
	43191018	F7452-900	TURBINE AND GEAR ASSEMBLY - 6 BRUSH	29.75
11	43576197	F7222-900, F7452-900	MOTOR ASSEMBLY	80.99
12	38784063	F7222-900, F7452-900	STANDPIPE SEAL	3.39
13	25156522	F7222-900	O-RING	1.12
	25156521	F7452-900	O-RING	1.12
14	92001321	F7222-900, F7452-900	HANDLE RELEASE PEDAL	4.76
15	36131151	F7222-900	TRUNNION BRACKET - LEFT	.88
		F7452-900	TRUNNION BRACKET - LEFT	N.A.
16	21479438	F7222-900, F7452-900	SCREW	1.12
17	38331006	F7222-900, F7452-900	SPRING - TURBINE ACTUATOR	1.12
18	36131152	F7222-900	TRUNNION BRACKET - RIGHT	1.12
		F7452-900	TRUNNION BRACKET - RIGHT	N.A.
19	38458066	F7222-900, F7452-900	ACTUATOR ARM - TURBINE	2.59
20	160017--	F7222-900, F7452-900	LOCK RING	.58
21	38522099	F7222-900	REAR WHEEL	2.11
	92001324	F7452-900	REAR WHEEL	4.53



**STEAM VAC™
DUAL V™**

**STEAM VAC™
ALL TERRAIN**

15

PART LISTING / PRICE LIST

MODEL No.

F7222-900

F7452-900

ITEM	PART NUMBER	MODELS TO FIT	PART DESCRIPTION	LIST COST
22	32434013NC	F7222-900	REAR AXLE	PENDING
	90001211	F7452-900	REAR AXLE	4.53
23	92001325	F7222-900, F7452-900	TOOL PORT DOOR - CLEAR	1.46
24	38784091	F7222-900, F7452-900	TOOL PORT DOOR SEAL	1.46
25	43411019	F7222-900	NOZZLE ASSEMBLY - 5 BRUSH	26.31
	43411020	F7452-900	NOZZLE ASSEMBLY - 6 BRUSH	31.30
26	37278014	F7222-900	SOLENOID COVER - RIGHT	.83
	37278013	F7452-900	SOLENOID COVER - RIGHT	1.12
27	25686057	F7222-900, F7452-900	SOLENOID VALVE - GRAVITY	11.33
28	25411015	F7222-900, F7452-900	HOSE CLAMP	1.12
29	90001101	F7222-900, F7452-900	TUBING - 6.75" LONG	1.13
30	39511014	F7452-900	GROOMERS	.56
31	92001267	F7452-900	GROOMERS PLATE	.89
32	21447217	F7452-900	SCREW - SELF TAPPING	1.12
33	21447268	F7222-900, F7452-900	SCREW	N.L.A.
34	43613018	F7222-900, F7452-900	FILTER AND SCREEN ASSEMBLY	4.19
35	90001101	F7222-900, F7452-900	TUBING - 6.75" LONG	1.13
36	25686056	F7222-900, F7452-900	SOLENOID PRESSURE VALVE	11.33
37		F7222-900, F7452-900	SOLENOID COVER - LEFT	N.A.
38	48437029	F7222-900	BRUSH BLOCK - 5 BRUSH	26.07
	48437030	F7452-900	BRUSH BLOCK - 6 BRUSH	27.21
	92001285	F7452-900	BARE FLOOR BRUSH - 6 BRUSH	31.17
	92001262	F7452-900	HARD FLOOR SQUEEGEE	6.79
39	37271138	F7222-900	HOOD / NOZZLE COVER - BRITE CRIMSON	17.00
	92001328	F7452-900	HOOD / NOZZLE COVER - PATRIOT BLUE	14.46
40	38421114	F7222-900, F7452-900	INDICATOR KNOB	.53
41	51865029	F7222-900	LABEL - BRUSH SPEED	.89
	51865036	F7452-900	LABEL - BRUSH	.89
42		F7222-900, F7452-900	MEDALLION	N.A.
	37272123	F7452-900	BODY / NOZZLE BASE - 6 BRUSH	31.74

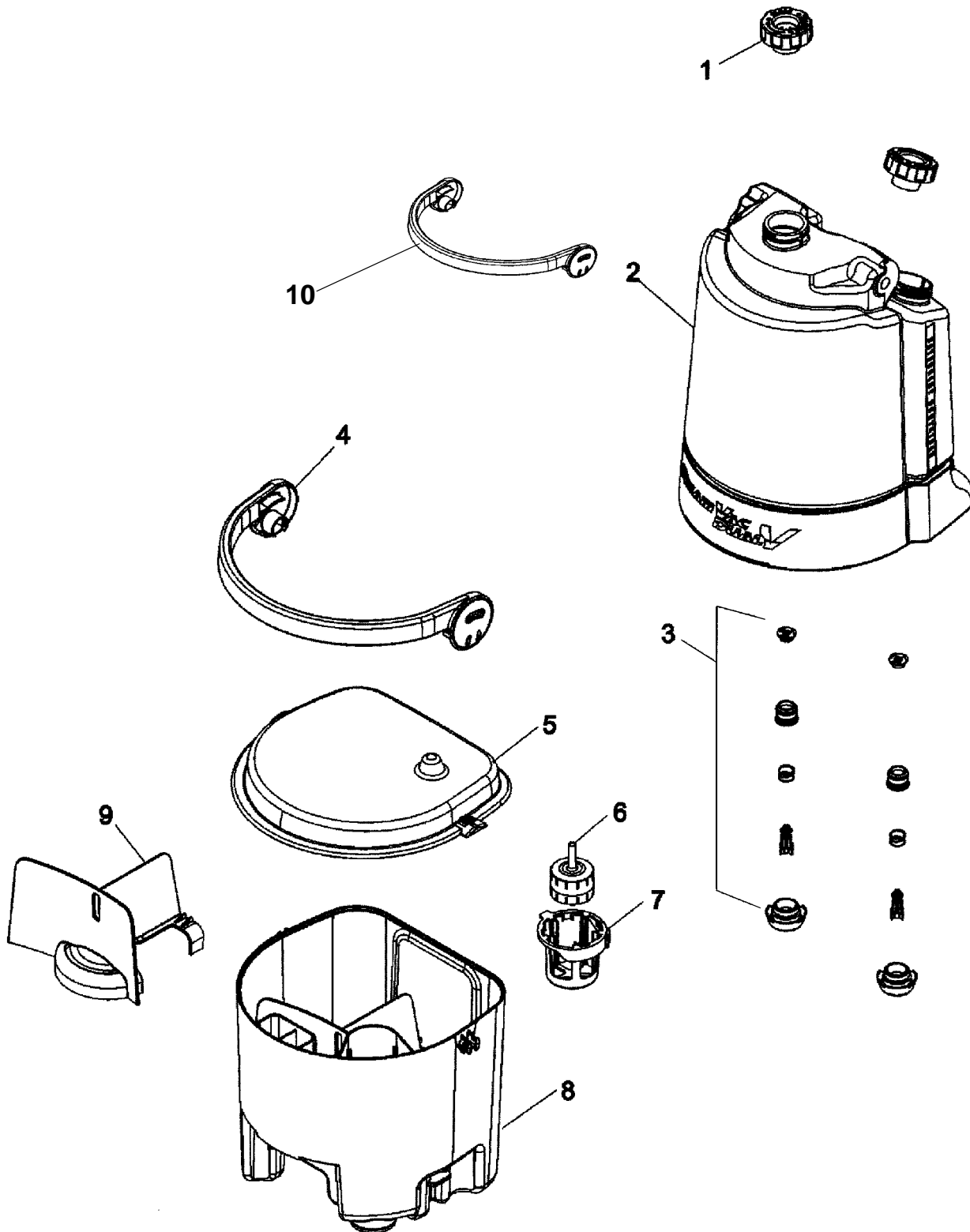


**STEAM VAC™
DUAL V™**

**STEAM VAC™
ALL TERRAIN**

15

ASSEMBLY SCHEMATIC



MODEL NO.

F7222-900

F7452-900



STEAM VAC™
DUAL V™

STEAM VAC™
ALL TERRAIN

15

PART LISTING / PRICE LIST

MODEL No.

F7222-900
F7452-900

ITEM	PART NUMBER	MODELS TO FIT	PART DESCRIPTION	LIST COST
1	42272138	F7222-900, F7452-900	THREADED CAP - TWIST ON	3.39
	42272174	F7222-900, F7452-900	THREADED CAP - SCREW ON / NEW STYLE	5.13
2	90001295	F7222-900, F7452-900	C. WATER / SOLUTION TANK - OLD STYLE ORDER 42272104	N.L.A.
	42272104	F7222-900, F7452-900	C. WATER / SOLUTION TANK - NEW STYLE	45.35
3	12002549	F7222-900, F7452-900	VALVE ASSEMBLY - ORDER 42272104	N.L.A.
4	39457069	F7222-900	DIRTY WATER TANK CARRYING HANDLE	2.26
	39457043	F7452-900	DIRTY WATER TANK CARRYING HANDLE - BLACK	5.66
5	91001079	F7222-900, F7452-900	DIRTY WATER TANK LID ASSEMBLY WITH FLOAT	17.00
6	43538002	F7222-900, F7452-900	FLOAT ASSEMBLY	2.59
7	38719043	F7222-900, F7452-900	FLOAT RETAINER	2.59
8	42272172	F7222-900, F7452-900	DIRTY WATER TANK ASSEMBLY COMPLETE	34.01
9	92001317	F7222-900, F7452-900	DIRTY WATER TANK BAFFLE	1.46
10	39457068	F7222-900	HANDLE / LATCH - C.W. / SOLUTION TANK - SANDSTONE GRAY	6.79
	39457062	F7452-900	HANDLE / LATCH - C.W. / SOLUTION TANK - PATRIOT BLUE	4.53