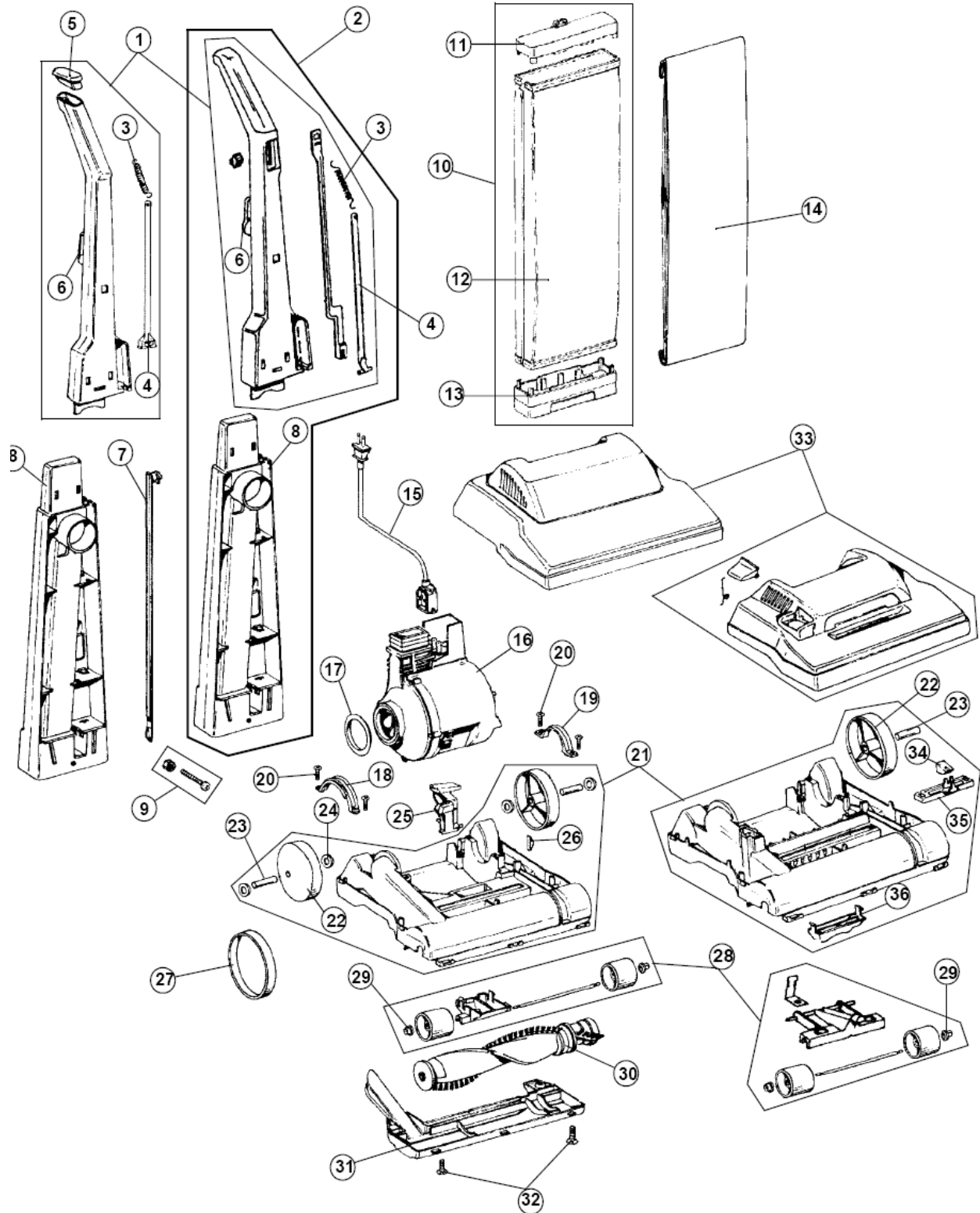


Parts List

Model C1404---

www.hoover.com

ASSEMBLY SCHEMATIC



Model C1404---

| ITEM | PART NUMBER | MODELS TO FIT | PART DESCRIPTION |
|------|-------------|---------------|--|
| 1 | 48663141 | C1404 | UPPER HANDLE ASSEMBLY - PRIOR TO 5/17/08 |
| | 48663247 | C1404 | UPPER HANDLE ASSEMBLY - AFTER 5/17/08 |
| 2 | 40309050 | C1404 | UPPER AND LOWER HANDLE KIT ASSEMBLY - NEW DESIGN CONVERSION |
| 3 | 38335020 | C1404 | BAG STRAP SPRING |
| 4 | 36425072 | C1404 | BAG STRAP |
| 5 | 37911079 | C1404 | HANDLE CAP |
| 6 | 90001100 | C1404 | CORD WRAP |
| 7 | 38456036 | C1404 | SWITCH ROD - LOWER PRIOR TO 5/17/08 |
| | 38458046 | C1404 | SWITCH ROD - LOWER AFTER 5/17/08 |
| 8 | 39464005 | C1404 | LOWER HANDLE - PRIOR TO 5/17/08 |
| | 48669017 | C1404 | LOWER HANDLE - AFTER 5/17/08 |
| 9 | 40201085 | C1404 | NUT AND BOLT ASSEMBLY |
| 10 | 43667034 | C1404 | OUTER BAG ASSEMBLY COMPLETE |
| 11 | 36425064 | C1404 | OUTER BAG SUPPORT - UPPER |
| 12 | 43686241 | C1404 | OUTER BAG |
| 13 | 36425063 | C1404 | OUTER BAG SUPPORT - LOWER |
| 14 | 4010001A | C1404 | TYPE A TOP FILL PAPER BAG - 3 PACK |
| 15 | 46368005 | C1404 | POWER CORD |
| 16 | 43576201 | C1404 | MOTOR ASSEMBLY |
| 17 | 38784016 | C1404 | MOTOR SEAL |
| 18 | 36131057 | C1404 | MOTOR RETAINER - LEFT |
| 19 | 36131090 | C1404 | MOTOR RETAINER - RIGHT |
| 20 | 21447217 | C1404 | SCREW - SELF TAPPING |
| 21 | 42242280 | C1404 | NOZZLE BASE ASSEMBLY WITH WHEELS - PRIOR TO 5/17/08 |
| | 42242281 | C1404 | NOZZLE BASE ASSEMBLY WITH WHEELS - AFTER 5/17/08 |
| 22 | 38522011 | C1404 | REAR WHEEL |
| 23 | 31531008 | C1404 | WHEEL SHAFT |
| 24 | 21312787 | C1404 | WASHER |
| 25 | 38458022 | C1404 | HANDLE RELEASE LEVER |
| 26 | 013261AY | C1404 | RIB SHOE |
| 27 | 38528040 | C1404 | BELT |
| 28 | 43248072 | C1404 | FRONT WHEEL ASSEMBLY - PRIOR TO 5/17/08 |
| | 43248073 | C1404 | FRONT WHEEL ASSEMBLY - AFTER 5/17/08 |
| 29 | 36131056 | C1404 | WHEEL RETAINER |

Model C1404---

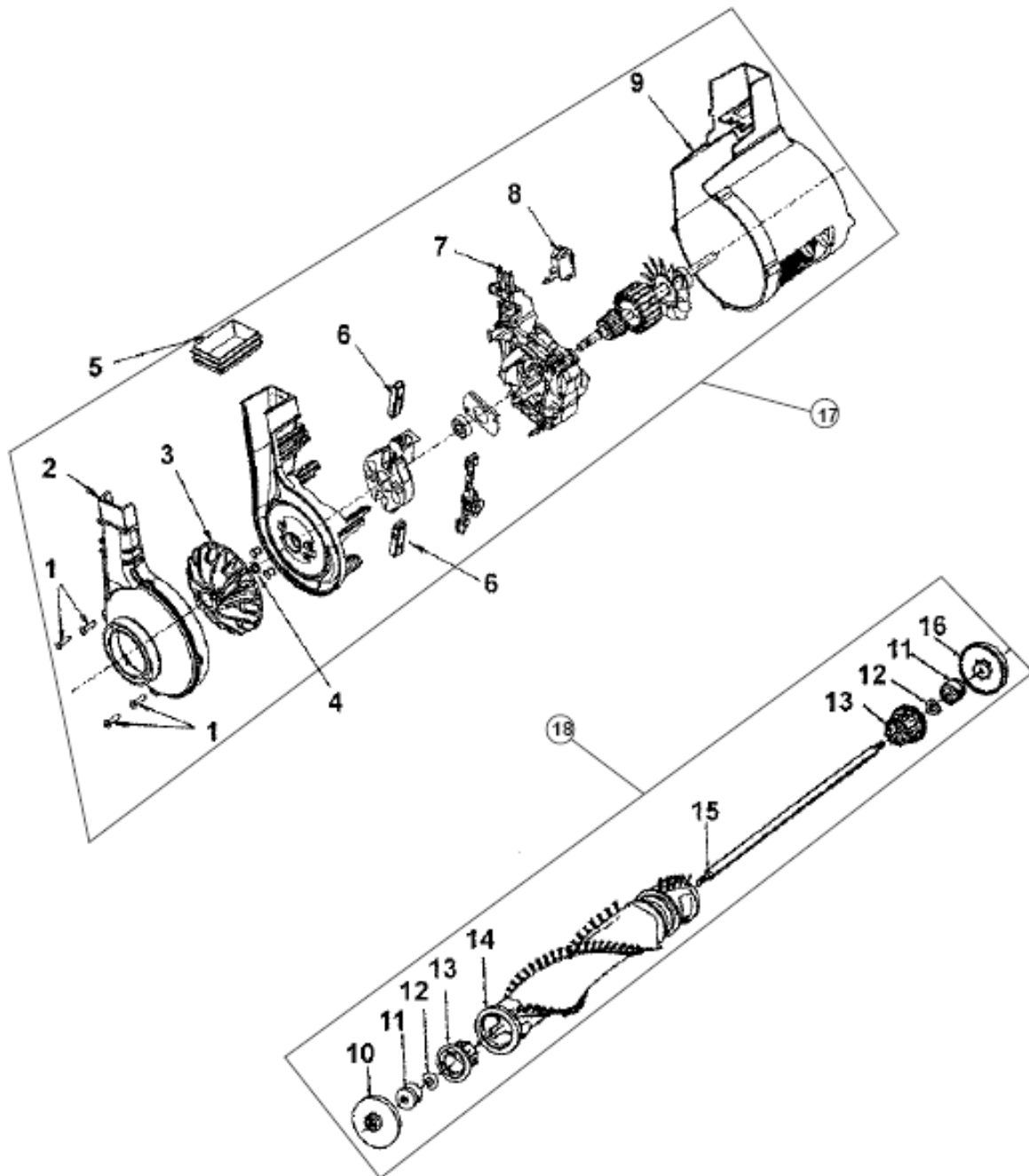
| ITEM | PART NUMBER | MODELS TO FIT | PART DESCRIPTION |
|------|-------------|---------------|--|
| 30 | 48414081 | C1404 | AGITATOR / BRUSH ROLL ASSEMBLY |
| 31 | 37245017 | C1404 | BOTTOM PLATE / NOZZLE GUARD |
| 32 | 21447121 | C1404 | SCREW - BOTTOM PLATE |
| 33 | 37252107 | C1404 | HOOD / NOZZLE COVER - PRIOR TO 5/17/08 |
| | 42252B43 | C1404 | HOOD / NOZZLE COVER - AFTER 5/17/08 |
| 34 | 38421070 | C1404 | INDICATOR KNOB |
| 35 | 38563011 | C1404 | HEIGHT ADJUSTMENT CAM |
| 36 | 38567008 | C1404 | CAM ACTUATOR |

Parts List

Model C1404---

www.hoover.com

ASSEMBLY SCHEMATIC



Model C1404---

| ITEM | PART NUMBER | MODELS To FIT | PART DESCRIPTION |
|------|-------------|---------------|--------------------------------|
| 1 | 214793DA | C1404 | SCREW - SELF TAPPING 5/8" |
| 2 | 38736033 | C1404 | FAN CHAMBER |
| 3 | 43565006 | C1404 | FAN / NUT ASSEMBLY |
| 4 | 21312793 | C1404 | WASHER |
| 5 | 38783020 | C1404 | DUCT SEAL - MOLDED |
| 6 | 41311022 | C1404 | MOTOR BRUSH |
| 7 | 36914006 | C1404 | SWITCH BAR |
| 8 | 28161068 | C1404 | ROCKER SWITCH |
| 9 | 37194049 | C1404 | MOTOR END CAP |
| 10 | 36423016 | C1404 | THREAD GUARD - RIGHT |
| 11 | 43267002 | C1404 | AGITATOR BEARING ASSEMBLY |
| 12 | 21347003 | C1404 | CONICAL WASHER |
| 13 | 36422022 | C1404 | AGITATOR END |
| 14 | | C1404 | AGITATOR BODY |
| 15 | | C1404 | AGITATOR ROD |
| 16 | 36423017 | C1404 | THREAD GUARD - LEFT |
| 17 | 43576201 | C1404 | MOTOR ASSEMBLY |
| 18 | 48414081 | C1404 | AGITATOR / BRUSH ROLL ASSEMBLY |