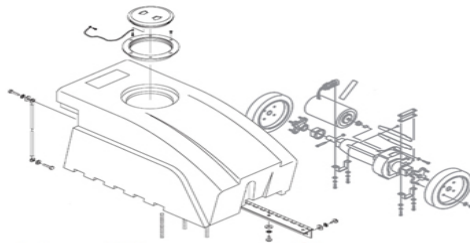
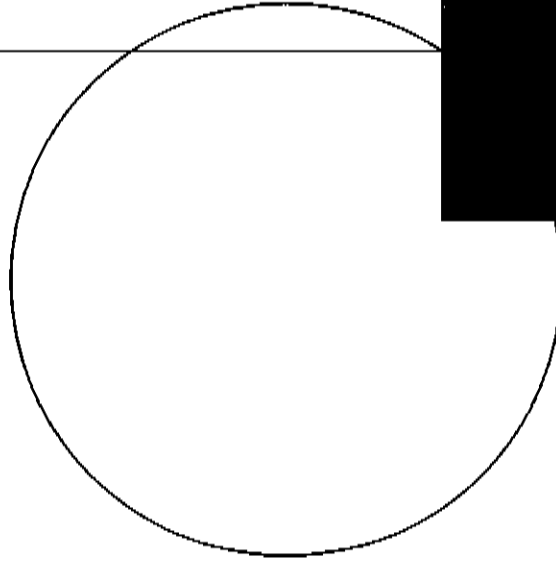
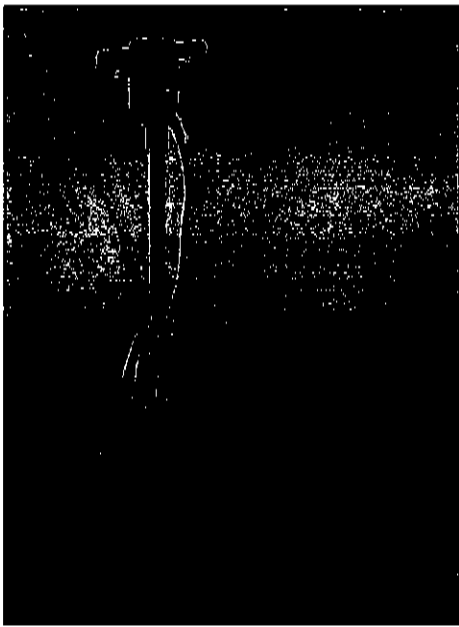


Foreman™ 1600 / 2000 RPM Burnisher

Operator's Manual and Parts Schematic

Item #83004

#83005



FLOOREQUIPMENTPARTS.COM

Better Resources. Better Results.
BETCO®

1001 Brown Avenue • P.O. Box 3127 • Toledo, Ohio 43607-0127
©All Rights Reserved • email@betco.com • www.betco.com

Specifications

- **Burnishing Path/Pad Size:** 20"
 - **Hour Meter:** Yes / 0.1 hour resolution
 - **Motor:** 1.5 hp, 120v, 15 A, 50/60 HZ
 - **Pad Pressure:** 15 lbs.
 - **Pad Speed:** 1600/2000 RPM
 - **Drive System:** V-Belt
 - **Power Cord:** 75' 14/3 Safety Yellow
 - **Handle Grips:** Anti-Fatigue
 - **Operating Wheels:** 5" Non-marking
 - **Transport Wheels:** 4" Non-marking
 - **Productivity:** 10-15,000 sq.ft. / Hour
 - **Weight:** 70 lbs.
 - **Dimensions:** Length 33.75", Width 21", Height 50"
-

! WARNING! IMPORTANT SAFETY INSTRUCTIONS

Carefully read and understand this manual before operating this machine.

To reduce risk of fire, electric shock, or injury:

- Do not operate in explosive areas, near flammable liquids or gases.
- Only plug into a properly grounded outlet.
- Do not exposure to rain, store indoors.
- Do not plug in or handle machine with wet hands.
- Do not operate the machine with a damaged cord or plug.
- Do not block or disconnect safety lever.
- Do not leave machine plugged in while unattended.
- Unplug machine before servicing.
- Do not put fingers under the pad or pad holder.
- Unplug the machine before installing or removing the pad.
- Use only high speed burnishing pads.
- Do not put any foreign object into openings. Do not use with any opening blocked; keep free of dust, lint, hair, & anything that may reduce airflow.
- Keep hair, loose clothing, fingers, & all parts of body away from openings & moving parts.
- Turn off all controls before unplugging.
- Do not use in or around flammable or combustible liquids such as gasoline or use in areas where they may be present.
- Connect to a properly grounded outlet only. See grounding instructions.

Grounding Instructions

This machine must be grounded. If it should electrically malfunction, grounding provides a path of least resistance for electric current to reduce the risk of electric shock. This machine is equipped with a cord having an equipment-grounding conductor & grounding plug. The plug must be plugged into an appropriate outlet that is properly installed & grounded in accordance with all local codes & ordinances.

! DANGER!

Improper connection of the equipment-grounding conductor can result in a risk of electric shock. Check with a qualified electrician or service person if you are in doubt as to whether the outlet is properly grounded. Do not modify the plug provided with the machine. If plug will not fit the outlet, have a proper outlet installed by a qualified electrician.

Replace the plug if the grounding pin is damaged or broken.

Extension cords connected to this machine should be 12 gauge, 3-wire cords with 3-prong plugs & outlets. DO NOT use extension cords more than 50 feet long.

Warranty Policy

10 Year

Subject to conditions stated below. Betco warrants the rotationally molded polyethylene tanks/housings and injection molded vacuum head assemblies to be free from defects in materials and workmanship for a period of ten years to the original purchaser.

3 Year

Betco offers a three-year warranty to the original purchaser on other Betco components to be free from defects in material and workmanship. *See list of exempted wear items.

*Note: Wear items exempt from warranty include power cords, transport wheels, belts, pad drivers, clutch plates, handle grips, filters, screens, gaskets, throttle cables and brushes.

Operating Instructions

Check machine for damage to cord or plug.

Use only Hi Speed Burnishing pads 20" or 19" diameter.

To install or change the pad:

1. Unplug the machine.
2. Tip the machine back on the wheels.
3. Remove the center-lock.
4. Center the pad on the pad driver.
5. Replace the center-lock and tighten securely.

To operate the machine:

1. Plug into a grounded outlet.
2. Release the handle and lower it.
3. The handle can be locked into a comfortable position for the operator or used free floating.
4. Press the safety lever and squeeze the trigger to start the machine.
5. Do not operate in one place as damage to the floor or finish could result.
6. Do not operate the machine with the handle in the upright position.
7. Remove the pad after every use.
8. Store the machine tilted back on the transport wheels.
9. Use only new or clean pads and reverse them as needed.

Maintenance Instructions

To maintain appearance – wipe the machine with a damp cloth after use.

Warning – Unplug the machine before servicing

This machine is equipped with an hour meter to signal maintenance intervals of 250 hours. It will begin flashing at 245 hrs and stop at 255 hrs to signal the operator to check the following:

1. Check the motor brushes for wear or excessive arcing.
2. Check belt tension.
3. Check the cord and electrical system.
4. Check the safety lockout on the trigger.
5. Check wheels and bearings.

Parts List

Part #	Description	Qty
Figure 1.		
310122	Switch Box, handle	1
310121	Cover, Switch Box	1
210102	Switch	1
310124	Handle Tube 7/8x16"	1
310118	Grips	2
310120	Trigger, Switch	1
310119	Safety Lock	1
110149	Spring	1
110163	Clip, Spring	1
210103	Cord, 75' - 14-3 ST	1
210105	Cord, Handle 14-3	1
210106	Grommet 3/8 ID	1
310125	Handle, Weldment	1
110150	Screw 1/4 - 20 x 3/4	2
110115	Nut, 1/4 - 20 Nylok	2
110140	Screw 1/4 - 20 x 1 1/4	4
210109	Wire, ground	1
210110	Wire Nut	2
110146	Wire Tie	1
110116	Screw # 6	2
110159	Decal, Safety	1
110105	Serial Tag	1
110171	Decal, Made in USA	1
Figure 2.		
310102	Pulley, 1600 RPM	1
310103	Pulley, 2000 RPM	1
110155	Spacer, .75 ID	1
310105	Pulley, Pad Drive	1
110145	Spacer, Pulley Brgs	1
110102	Bearing	2
310109	Bracket, Pulley Mt.	1
310123	Belt, 1600	1
310134	Belt, 2000	1
110119	Washer, Flat 5/16 USS	1
110120	Washer, lock 5/16	1
110152	Bolt, 5/16-18 x1" Hex	1
110123	Washer, Flat 3/8	8
110124	Washer, Lock 3/8	8
110126	Bolt, 3/8-16 x 1.25	5
110127	Nut, 3/8-16	1
110125	Bolt, 3/8-16 x, 75	4
110165	Bolt, 3/8-16 x 1"	1
Figure 3.		
310101	Base, High Speed	1
210101	Motor, 1.5 HP, 3200	1
310114	Wheel 5"	2
310112	Wheel 4"	2
310132	Axel, 1/2" x 12 3/8"	1
310115	Axel, 1/2" x 13.875"	1
310116	Axel, 1/2 x 17.25"	1
110144	Caps, Axel 1/2"	6

Figure 1.

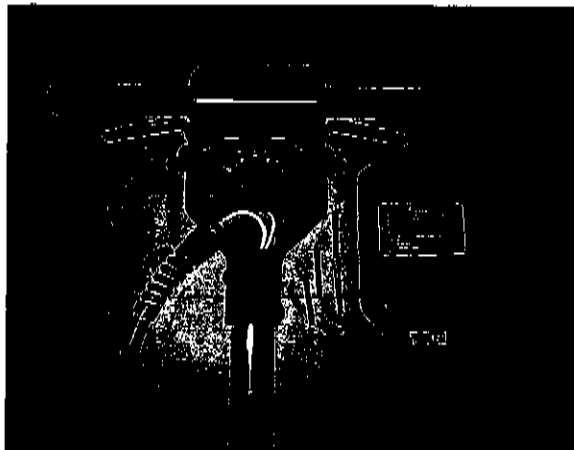


Figure 2.

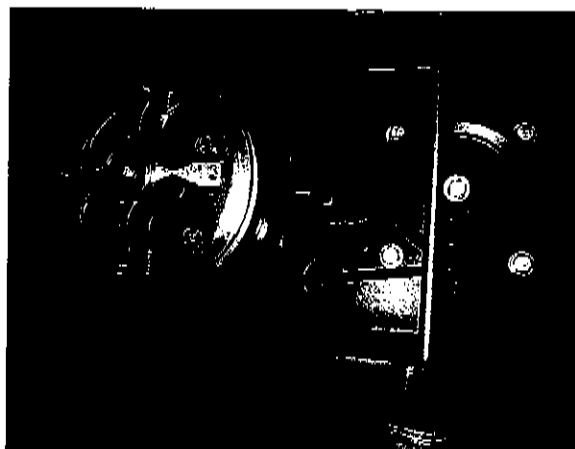


Figure 3.



Parts List

Part #	Description	Qty
Figure 4.		
310129	Handle Cam Lock	1
110111	Bolt, Adj 5/16-18 Cam	1
110112	Washer, Oval	1
110148	Nut, 5/16-18 Nylock	2
310128	Cord Hook	1
310130	Bracket, Handle	1
110114	Pin 1/4 x 3/4	1
110164	Washer, Spring 1/4"	1
110151	Cap, Push 1/4"	1
110169	Washer, Spring 3/8"	1
110168	Washer, Spring 1/2"	7
110103	Washer, Nylon	7
Figure 5.		
310133	Cover, Motor, Red	1
210108	Hour Meter	1
110141	Screw 1/4-20 x 1"	4
110142	Washer 1/4 Flat	4
110143	Washer 1/4 Lock	4
310111	Bumper	1
110150	Screw 1/4-20 x 3/4	2
110130	Washer, Fender 1/4"	2
310106	Pad Driver Assy	1
110166	Screw 5/16-18 x 1.25	4
110161	Decal Foreman 1600	1
110162	Decal Foreman 2000	1
110137	Manual, 1600/2000	1
110107	Box, Packaging	1
110134	Box, Insert bottom	1
110135	Box, Insert Handle	1

Figure 4.

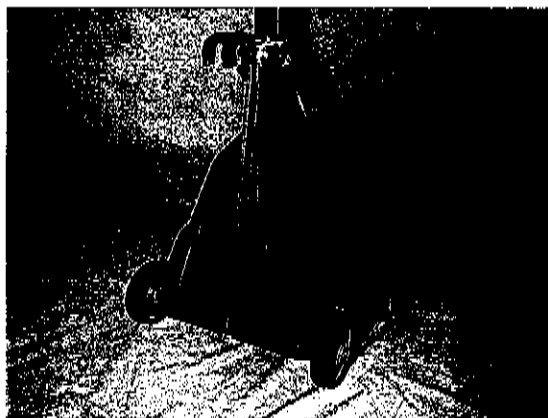
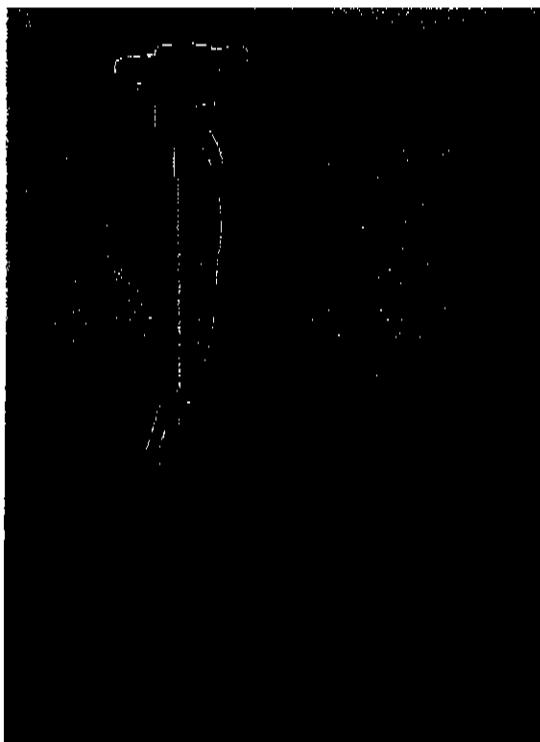


Figure 5.



Betco Corporation
 1001 Brown Avenue
 Toledo, Ohio 43607
 1-800-333-2156 Fax 1-419-536-2102
www.betco.com