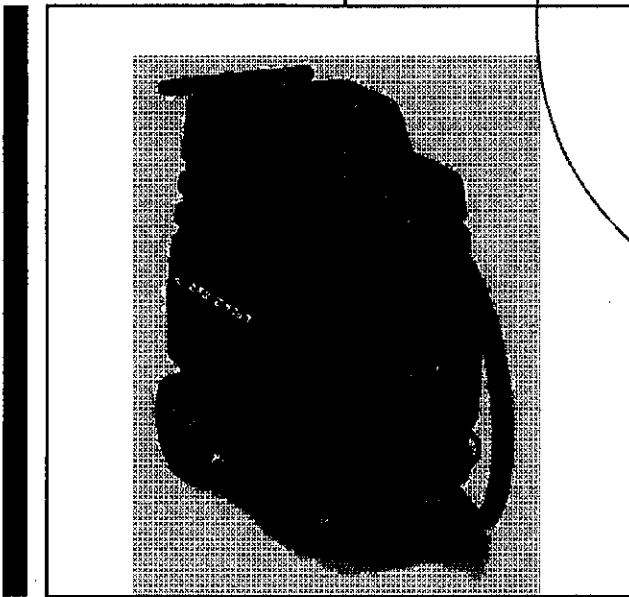


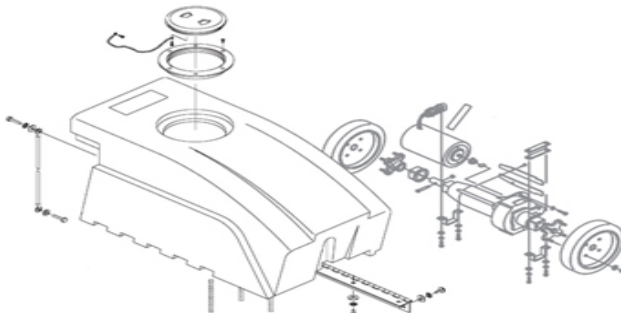
FiberPRO™ 13 Gallon Portable Extractors

Operator's Manual



FP13
FP13D

Item #83002
Item #83003



FLOOREQUIPMENTPARTS.COM

Better Resources. Better Results.
BETCO®

IMPORTANT SAFETY PRECAUTIONS

WARNING! To reduce the risk of fire, electric shock, or injury:

WARNING
To avoid fire, **DO NOT**
use with a flammable
or combustible liquid
to clean floor.



WARNING
To avoid electric
shock, **DO NOT**
expose to rain.
Store indoors.

When using this extractor, basic precautions should always be followed, including the following:

- 1) **DO NOT** leave unit when plugged in. Unplug from outlet when not in use and before servicing.
- 2) **DO NOT** allow unit to be used as a toy. Close attention is necessary when used around or near children.
- 3) Use only as described in this manual. Use only manufacturer's recommended attachments.
- 4) **DO NOT** use with damaged cord or plug. If unit is not working properly because it has been dropped, dropped into water, left outdoors, or damaged in any way, contact a service center of Betco.
- 5) **DO NOT** handle plug or appliance with wet hands.
- 6) **DO NOT** put any objects into openings. **DO NOT** use with any opening blocked: keep free of dust, lint, hair, or anything that may reduce air flow.
- 7) Keep hair, loose clothing, fingers, and all parts of body away from openings and moving parts.
- 8) **DO NOT** pick up anything that is smoking or burning such as cigarettes, matches, or hot ashes.
- 9) **DO NOT** use to pick up hazardous chemicals.
- 10) Turn off all controls before unplugging.
- 11) Turn unit off immediately if foam or liquid comes from machine exhaust. Empty & clean out recovery (dirty) tank and use defoamer to correct the problem.
- 12) **DO NOT** use to pick up flammable or combustible liquids such as gasoline or use in areas where they may be present.
- 13) **DO NOT** use where oxygen or anesthetics are used.
- 14) Replace damaged or worn parts immediately with genuine original equipment parts to maintain safety.
- 15) This unit must be connected to a properly grounded outlet only. See grounding instruction on page 3.

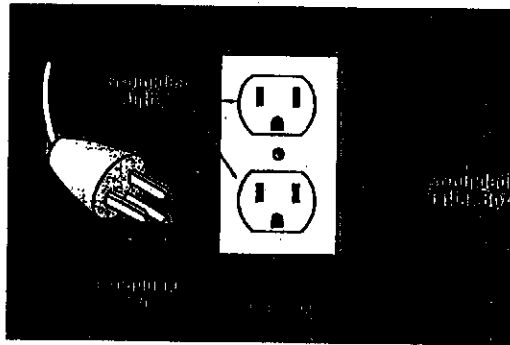
GROUNDING INSTRUCTIONS

DANGER: Improper use of the grounding plug can result in a risk of electric shock

GROUNDING INSTRUCTIONS

This extractor must be properly grounded. If it should malfunction or breakdown, grounding provides a path of least resistance for electrical current to reduce the risk of electric shock. This machine is equipped with 1 or 2 pigtail cords having an equipment-grounding conductor and grounding plug.

GROUNDING METHODS



This unit is for use on a nominal 120 volt circuit and has a grounded plug that looks like the plug illustrated in (Fig. A).
NOTE: In Canada, the use of a temporary adapter is not permitted by the Canadian Electrical Code.

WARNING!

Improper connection of the equipment-grounding conductor can result in a risk of electric shock. Check with a qualified electrician or service person if you are in doubt as to whether the outlet is properly grounded. **DO NOT** modify the plug provided with the appliance. If it will not fit the outlet, have a proper outlet installed by a qualified electrician.

General instructions for Upright Extractors

Congratulations on your purchase of a Betco extractor. You are now equipped to handle any and all commercial carpet cleaning jobs. Your new extractor is outfitted with a 1750-watt in-line heater (83003). The water heats up as it passes through the heater to a high water temperature. To obtain and maintain maximum heat levels start out with the hottest tap water you can get (120-135 degrees). This will also ensure a faster start up time (60-90 sec., 3-4 minutes if starting with cold water). Follow these easy step by step instructions to insure proper operating performance.

Shipping and Damage

This equipment is thoroughly inspected, tested, and packaged to provide equipment in good operating condition. It is beyond our control after the equipment is turned over to a freight carrier. The freight carrier received and signed for the equipment in good condition. Consequently, it is most important to protect your interest by carefully complying with the following instructions:

Please inspect your cartons for any damage (including concealed damage) that might have occurred during shipment. Damage is the responsibility of the freight carrier and should be reported to the freight carrier immediately. It is your responsibility to issue a claim and to receive compensation from the freight carrier for any damage done in transit. Damage of this sort is not warranted.

Follow these easy step by step instructions to insure proper operating performance.

1. Fill up the fresh water solution tank with tap water that is 120-135 degrees and approved carpet cleaning chemical if you are not pre-spraying your chemical on the carpet.
2. Plug cord located on the lower backside of the unit into separate circuits. (83003) The red tagged cord powers the heater while the non-tagged cord powers the vacuum motors and pump.
3. When this is accomplished the green indicator light will be lit (on 83003 models only).
4. Attach the hose system to the unit and to your carpet wand.
5. Turn on the heater and the pump to the "on" position, (only pump on 83002 models) when the heater is on the orange indicator light on the switch panel will be lit.

6. With the solution line attached to the wand and the machine, prime the pump by squeezing the trigger on the wand releasing the water (hold wand tip over solution tank to put water back into solution tank). (83003) This will pump water into the heater and get any air out of the solution line. Let the heater heat up this will take 60-90 sec.
7. Turn vacuum switches to the "on" position and begin cleaning.
8. Anyone designated to operate this equipment must, without fail, read and thoroughly understand all instructions and precautions prior to use.
9. Never use equipment in the rain.
10. **Never use flammable or explosive materials in or around this equipment!!!**
11. When vacuum tank is full, empty by using drain valve at front of machine. If a pail is used to empty the vacuum waste tank, do not use the same pail to fill the solution tank as this can result in putting dirt and grit into the solution line that can plug filters, orifices, and generally degrade the solution line system.
12. To empty solution tank, detach the wand from the end of the vacuum hose and insert the vacuum hose into the solution tank. Turn the vacuum switch to "on" position and transfer solution to vacuum tank and dispose of as outlined in #11. Clean vacuum stack filter at this time.

Maintenance

To receive reliable service from this equipment, regular daily maintenance is a requirement. Fabric cleaning, both carpet and upholstery, are very dirty environments for any equipment. The following recommendations are offered.

1. Keep the equipment clean, both inside and out.
2. Lubricate brass quick disconnects and drain valves with a quality lubricant such as WD-40.
3. Flush solution systems weekly with clear, clean water. (A white vinegar solution may also be used, 1:10 ratio). This will counter-act hard water and alkaline deposits and aid in keeping orifices clean.
4. Do not allow fluid either in solution or waste tank to sit overnight. The unit should be emptied and cleaned daily.

5. Clean the strainer in the solution tank, the filter on vacuum stack in vacuum tank and the lint filter in the inlet or vacuum tanks daily.
6. Do not use the same receptacle (bucket) to fill solution tank that is used to remove waste from vacuum tank.
7. When the unit is not in use, leave the vacuum tank lid open.
8. At the end of each day, run the vacuum for 3 minutes with lid open and filter off.

Safety Precautions

These precautions are designed with the safety of the operator, the equipment, and others in mind and must be followed at all times to avoid serious personal harm and/or death, and damage to the unit.

1. Always use a grounded electrical outlet.
2. Always disconnect electric cable from electrical outlet before attempting to make any adjustments or repairs.
3. Never use this equipment as a toy.
4. Never use equipment near or around flammable or explosive materials, fuels, or solvents.
5. Never put flammable materials, fuels, or solvents into equipment.
6. Never lift the machine by the drain valve.
7. Do not allow the unit to freeze!
8. The equipment was not designed to be used outdoors or in the rain.
9. Do not operate in standing water.
10. Wear safety equipment and clothing to protect from extremely hot water.
11. Do not operate equipment under any unsafe condition.
12. Do not operate if cords, hoses, etc. are cracked, frayed, leaking, or otherwise in need of repair.
13. Common sense is a powerful force in protecting the operator, the equipment and others from serious damage injury and/or death.

Storage of Equipment

1. Store extractor indoors in dry area.
2. Recovery and solution tank should be empty and clean when the extractor is not in use.
3. Leave the recovery lid and dump valve open to air out the recovery tank.
Do not store in freezing temperature.
5. A small amount of windshield washer fluid available at an auto supply may be left in the pump and internal solution line for protection against freezing.

Warnings

1. Do not break off or pull the grounding prong on the plug.
2. Do not attempt repair on a warranted machine unless instructions to perform it by an authorized shop are obtained from the factory.
3. Do not use citrus-based cleaners in this machine.
4. Do not use cleaning chemicals in this machine except those recommended for steam-type extraction equipment. The use of any chemicals with abrasive additives voids the warranty.
5. Do not use any replacement parts except those specified on the parts list. Performance of the machine could be affected if substitutions are made.
6. Do not use water in excess of 140° F (62° C) through the pump system. It could damage the seals and polypropylene casing of the diaphragm pump.
7. Follow maintenance schedule strictly.
8. Failure to comply with the above warnings instructions will void the warranty.

ONE LAST REMINDER

Read All Instructions, Warnings and Cautions Before Using

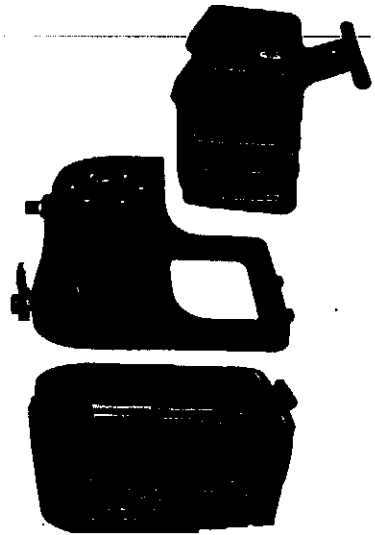
These cautions are provided for your protection and convenience. Please read them carefully. Strict failure to heed these precautions could result in destruction of unit. When using an electrical appliance, basic safety precautions should always be followed.

WARNING

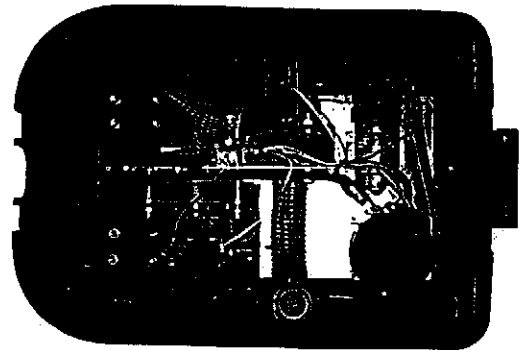
TO AVOID FIRE, DO NOT USE WITH A FLAMMABLE OR COMBUSTIBLE LIQUID TO CLEAN FLOOR.

UPRIGHT CARPET EXTRACTOR PARTS

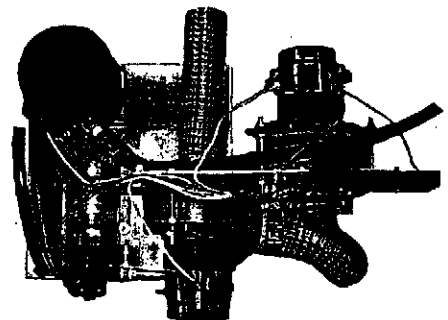
Item #	Description
1942	motor, vac
104WDSI-B	hose, insider, 20' (83003)
1504WDS-B	vacuum / solution hose, 20' (83002)
J1003GC	hose, 2" ID x 14" long
M1403	cord, 12/3, 30'
PC20	fitting, brass, reducer, 3/8" to 1/4" (83003)
PC38	fitting, coupler, female, 1/4" x 1/4"
PC49	fitting, brass, elbow, 1/4" (83003)
PD8	strain relief
PF1750	heater, 110VAC (83003)
PX3H	hose, solution, 3/8" ID (by the foot)
PX5	fitting, brass, 14" male quick disconnect
PX8	fitting, brass, 1/2" NPTM X 3/8" male hose barb
PX10	valve, dump
PX11A	fitting, plastic, 1 -1/2" elbow
PX12	plate, mounting, power wand plug
PX14	gasket, thin, (dump valve, vacuum hose barb, tube assembly)
PX14A	gasket, thick, (dump valve)
PX15A	fitting, plastic, 1/4", 90 degree hose barb
PX17	fitting, brass, 1/4", 45 degree street elbow
PX25	fitting, plastic, 1-1/2" hose barb
PX26	caster, 3"
PX30	mesh screen filter, 1/4" NPTF
PX31	float cage w/heavy ball
PX32	fitting, brass, 1/4" close nipple
PX33S	vacuum tube assembly
Y42	clamp, hose, 5/8"
43	clamp, hose, 2-3/4"
X46	nut, lock, 1-1/2", (dump valve, vacuum hose barb)
PX48	fitting, brass, bulkhead
PX48G	gasket, bulkhead fitting
PX49	plug, power wand
PX85	fitting, brass, 1/4" NPTM X 3/8" hose barb
PX86	light, indicator, 220V, green (83003)
PX87	switch, rocker, on/off
PX88	grommet, rubber (between solution & recovery tanks)
PX98	plate, mounting, motor/pump
PX99A	hose, pulse, 36" long (83003)
PX99B	hose, high temp, 18" long (83003)
PX100G	housing, base, gray
PX101G	housing, solution tank, gray
PX102R	housing, recovery tank, red
PX103	lid, plastic, 6" diameter
PX103G	lid gasket
PX104	latch
PX105	plate, switch, w/silkscreen legends (83002)
PX105H	plate, switch, w/silkscreen legends (83003)
PX106A	wheel, 10"
PX107	axle
PX108	axle bracket
PX109	pin, hinge, 1/2" dia
PX110	grill, fan
PX114C	cover, terminal block
130	terminal block assembly (83002)
131	wiring harness, switchpanel to terminal block assembly (83002)
PX132	terminal block assembly (83003)
PX133	wiring harness, switchpanel to terminal block assembly (83003)
SF814	pump, shurflo 100 psi
X8008N	nut, strain relief
X8102	light, indicator, 110V, amber (83003)



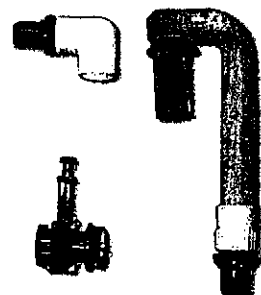
EXTRACTOR MAIN HOUSINGS



MOTOR HOUSING AND MOTOR PLATE ASSEMBLY



PLUMBING AND PVC PARTS



Troubleshooting Information

ELECTRICAL SYSTEM		
PROBLEM	POSSIBLE CAUSE	SOLUTION
No electrical power.	1. Defective power cord. 2. Circuit breaker off or fuse blown.	1. Replace 2. Turn circuit breaker on or replace fuse. Unplug any equipment using the same circuit.
Switch is turned on.	1. Faulty electrical cable.	1. Repair or replace.
Intermittent power to motor(s).	2. Defective switches. 3. Loose terminal or discolored terminal connections.	2. Replace. 3. Replace.
Electrical Shock	1. Equipment not grounded.	1. Locate grounded outlet.

VACUUM SYSTEM		
PROBLEM	POSSIBLE CAUSE	SOLUTION
Vacuum motor on – little or no suction at wand head.	1. Drain value open 2. Defective hose, kinks/cracks 3. Defective vacuum motor 4. Damaged lid 5. Lint clogging float shut off ball 6. Vacuum hose from vac motors to upper unit disconnected. 7. Vacuum motor exhaust clogged.	Close valve, recovery lid must be closed. Repair or replace hose. Repair or replace motor. Replace. Clean. Attach hose. Remove obstruction.
Premature closing of ball type shutoff.	1. Dirty or clogged screen. 2. Float ball coated with detergent. 3. Screen slightly out of round. 4. Elbow in waste tank in wrong position.	Remove, clean screen. Clean. Adjust screen. Elbow must be pointed to left side of machine.
Foam/Dirty solution coming from vacuum port.	1. Foam from carpet bypassing shut-off.	Use defoamer.

SOLUTION SYSTEM		
PROBLEM	POSSIBLE CAUSE	SOLUTION
Pump on – no spray coming out of spray tip.	1. Clogged or faulty solution valve. 2. Clogged tip. 3. Clogged or faulty quick disconnect on front housing. 4. Punctured diaphragm.	Replace valve. Clean tip. Depress plunger on solution hose against inside wall of solution tank. If solution is flowing at this point, the system is okay. If no solution flows, check the quick disconnect for lint and other foreign matter. Install new pump kit.
Pump pressure.	1. Clogged tip. 2. Clogged strainer in solution tank. 3. Punctured diaphragm.	Clean. Clean strainer. Install new pump kit.
Pump press varies.	1. Worn carbon brushes. 2. Defective pressure switch.	Replace carbon brushes. Replace pressure switch.
Pump doesn't come on.	1. Defective switch or rectifier.	Replace.