



**FUSION™ MACH<sup>3</sup>**  
**MACH<sup>4</sup> MACH<sup>6</sup>**  
**MACH<sup>5</sup> Power Max**

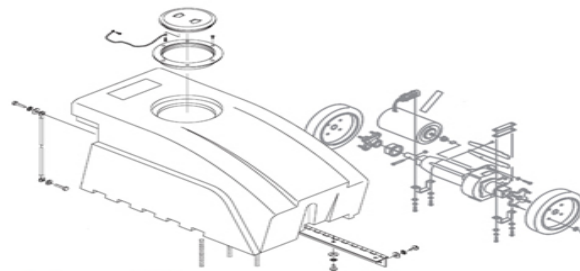
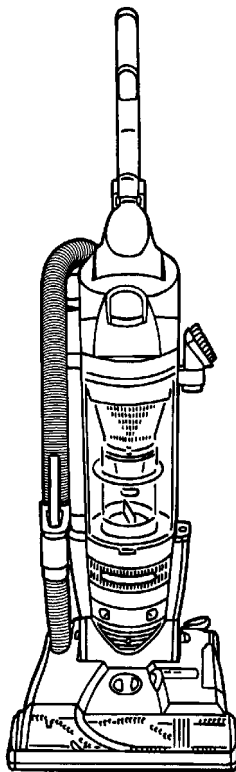
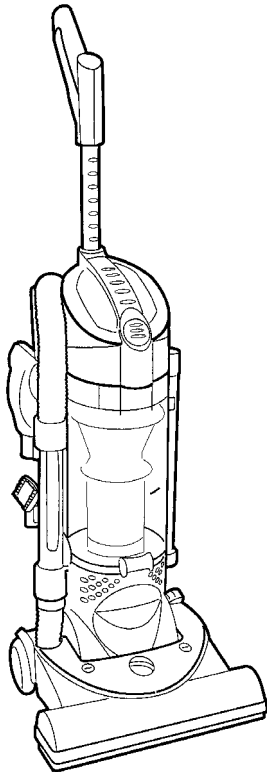


SECTION CONTENTS

<u>MODEL No.</u>	<u>PAGE No.</u>
U5180-900	28-2 THRU 28-8
U5180-910	28-2 THRU 28-8
U5182-900	28-2 THRU 28-8
U5183-900	28-2 THRU 28-8
U5185-900	28-2 THRU 28-8
UH70005B	28-2 THRU 28-8
U5780-900	28-9 THRU 28-12
U5781-900	28-9 THRU 28-12
U5194-900	28-13 THRU 28-17
U5198-900	28-13 THRU 28-17
U5184-900	28-18 THRU 28-19

MODEL No.

- U5180-900
- U5180-910
- U5182-900
- U5183-900
- U5184-900
- U5185-900
- U5780-900
- U5781-900
- U5194-900
- U5198-900
- UH70005B



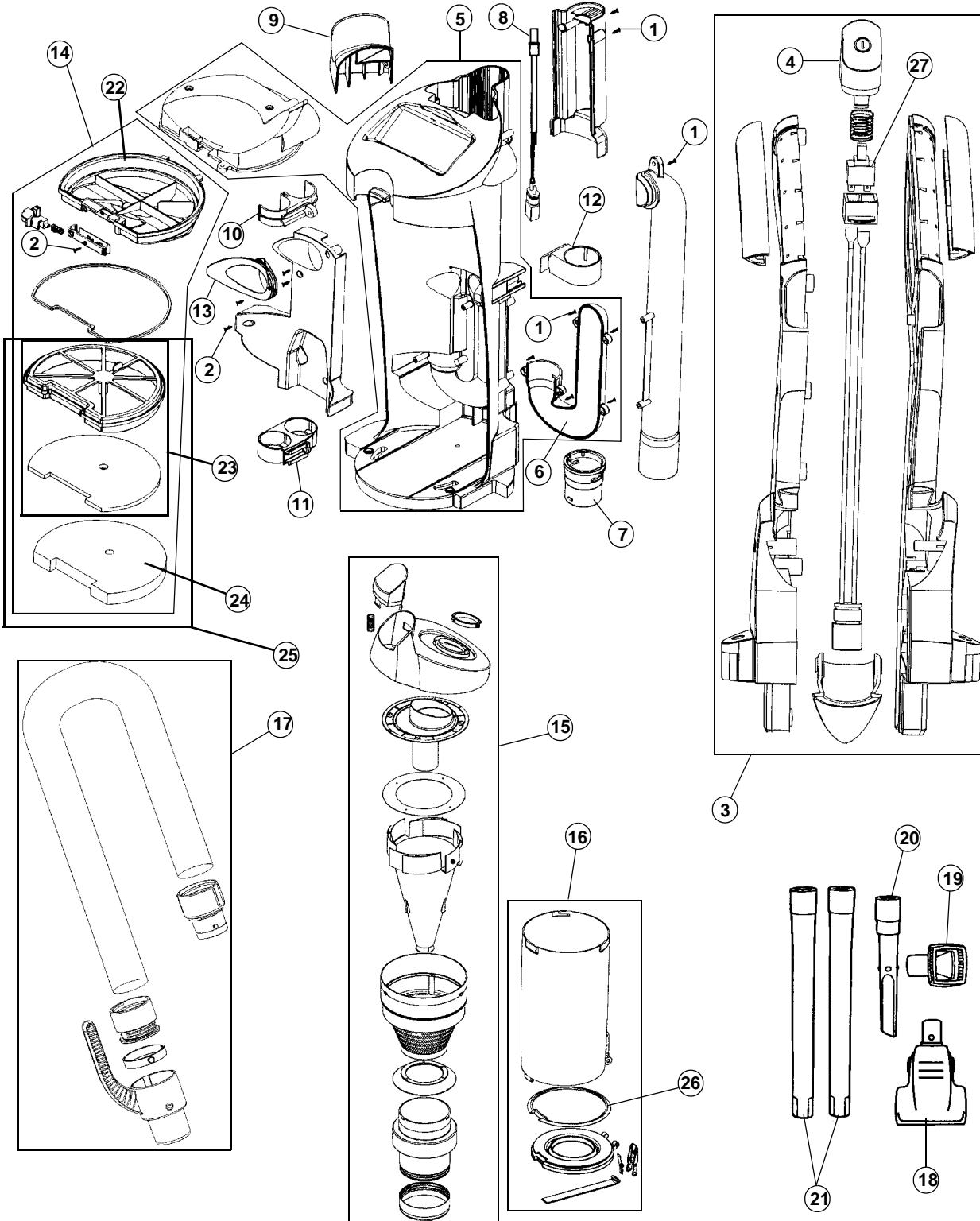
FLOOR EQUIPMENT PARTS.COM

- \* PRICING, SPECIFICATION'S, AND PRODUCT AVAILABILITY ARE SUBJECT TO CHANGE WITHOUT NOTICE. PRICING IS FOB FACTORY, CANTON, OH
- \* ALL INFORMATION CONTAINED WITHIN THIS SERVICE MANUAL IS PROPRIETARY INFORMATION OF TTI FLOOR CARE NORTH AMERICA.
- \* **WARNING:** TO REDUCE THE RISK OF ELECTRICAL SHOCK OR INJURY, ALWAYS DISCONNECT THE APPLIANCE CORD FROM THE ELECTRICAL OUTLET OR REMOVE BATTERY PRIOR TO SERVICING THE UNIT.



28

### ASSEMBLY SCHEMATIC



MODEL No.

U5780-900

U5781-900



28

PART LISTING / PRICE LIST

MODEL No.

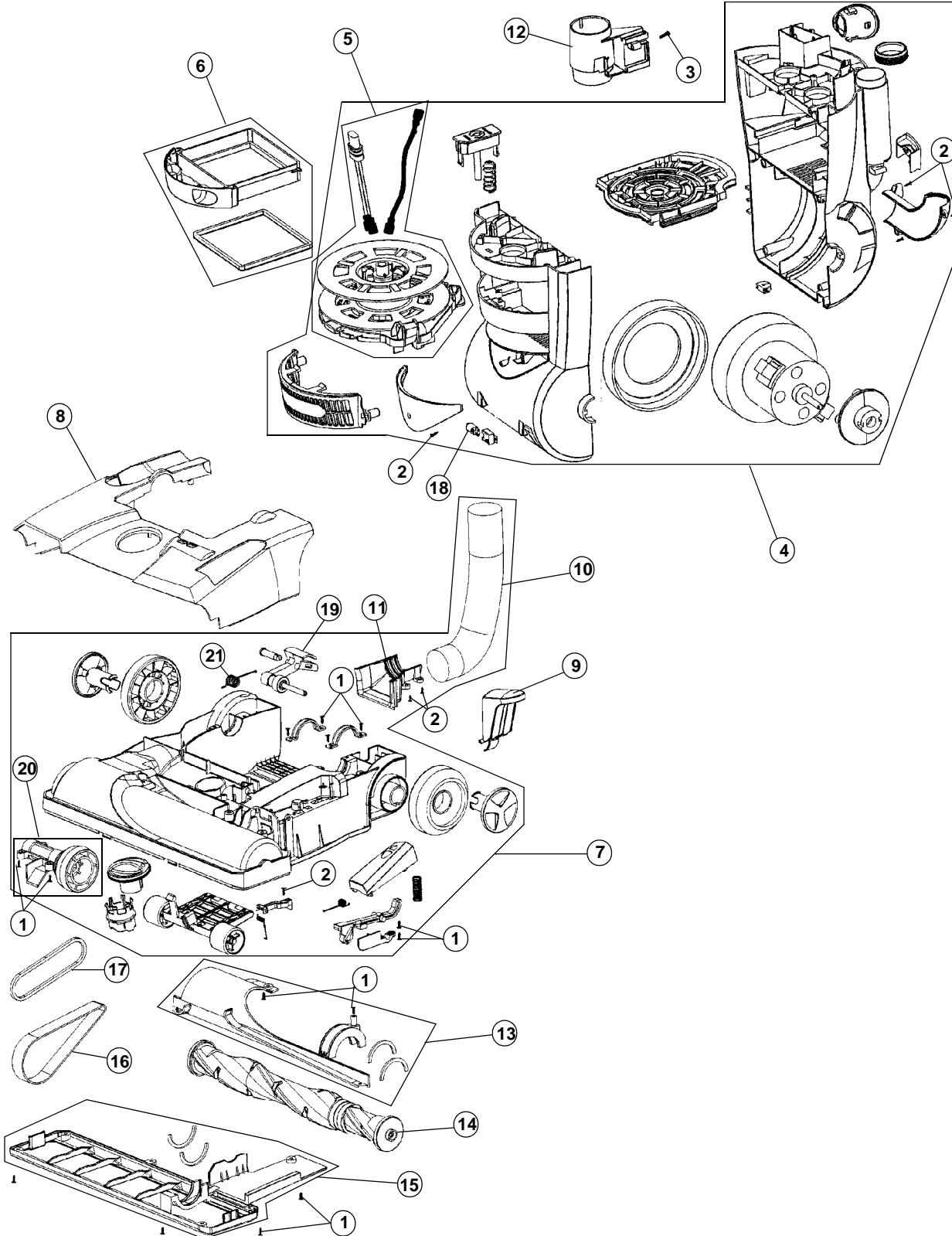
U5780-900  
U5781-900

ITEM	PART NUMBER	MODELS TO FIT	PART DESCRIPTION	LIST COST
1	93001840	U5780900, U5781900	BODY SCREW 4.2 X 16 AND HANDLE SCREWS	.53
2	18381522	U5780900, U5781900	SCREW 3.5 X 12	N.L.A.
3	21150100	U5780900, U5781900	HANDLE ASSEMBLY	10.44
4	26211370	U5780900, U5781900	SWITCH BUTTON	2.27
5	20144227	U5780900, U5781900	MAIN HOUSING ASSEMBLY	23.58
6	11041043	U5780900, U5781900	AIR DUCT COVER	1.59
7	11041044	U5780900, U5781900	AIR DUCT COVER ADAPTOR	.38
8	26401317	U5780900, U5781900	WIRING CONNECTOR ASSEMBLY	6.72
9	11041055	U5780900, U5781900	UPPER HOSE HOLDER	.68
10	11041053	U5780900, U5781900	UPPER TUBE HOLDER	.23
11	11041052	U5780900, U5781900	LOWER TUBE HOLDER	.45
12	11041065	U5780900, U5781900	TURBINE POWER HAND TOOL HOLDER	.68
13	11041105	U5780900, U5781900	AIR INLET SEAL - DIRT CUP	4.08
14	40462125	U5780900, U5781900	COMPLETE SECONDARY FILTER ASSEMBLY WITH BOTTOM FILTER COVER	6.12
15	40108212	U5780900, U5781900	DIRT CUP LID AND FILTER ASSEMBLY	25.52
16	22150200	U5780900, U5781900	DIRT CUP ASSEMBLY	28.58
17	23986900	U5780900, U5781900	UPPER HOSE ASSEMBLY	10.06
	93002362	U5780900, U5781900	BONUS HOSE - OPTIONAL	13.03
18	15811012	U5780900, U5781900	TURBINE POWER HAND TOOL	13.91
	48414088	U5780900, U5781900	BRUSH ROLL - TURBINE POWER HAND TOOL	18.13
	38528037	U5780900, U5781900	BELT - TURBINE POWER HAND TOOL	5.24
19	15810030	U5780900, U5781900	FURNITURE BRUSH	.23
20	15804217	U5780900, U5781900	CREVICE TOOL	.98
21	12640720	U5780900, U5781900	EXTENSION WAND	2.80
22	93002499	U5780900, U5781900	BOTTOM COVER - SECONDARY FILTER	1.82
23	93002517	U5780900, U5781900	SECONDARY FILTER ASSEMBLY - <b>ORDER #25 / 40110012</b>	N.L.A.
24	93002518	U5780900, U5781900	SECONDARY FOAM FILTER	3.73
25	40110012	U5780900, U5781900	SECONDARY FILTER WITH FOAM FILTER	9.45
26	93002437	U5780900, U5781900	GASKET - DIRT CUP DOOR	2.45
27	93001705	U5780900, U5781900	SWITCH	5.66



28

### ASSEMBLY SCHEMATIC



MODEL No.

U5780-900

U5781-900



PART LISTING / PRICE LIST

MODEL No.

U5780-900  
U5781-900

ITEM	PART NUMBER	MODELS TO FIT	PART DESCRIPTION	LIST COST
1	93001840	U5780900, U5781900	BODY SCREW 4.2 x 16	.53
2	18381522	U5780900, U5781900	SCREW 3.5 x 12	N.L.A.
3	18147152	U5780900, U5781900	SCREW 4.2 x 25 - LOWER HOSE HOLDER	.05
4	21040104	U5780900, U5781900	MOTOR AND HOUSING ASSEMBLY WITH CORD REEL	122.47
5	93002478	U5780900, U5781900	CORD REEL ASSEMBLY	69.71
6	21041096	U5780900, U5781900	EXHAUST HEPA FILTER	9.36
	93002360	U5780900, U5781900	EXHAUST HEPA FILTER - SUB	12.42
7	21151010	U5780900, U5781900	NOZZLE BASE ASSEMBLY MGF PRIOR TO 9/2007	58.97
	21151009	U5780900, U5781900	NOZZLE BASE ASSEMBLY - REVISED MFG 9/2007 AND NEWER	56.62
8	10134227	U5780900, U5781900	NOZZLE HOOD COVER	7.11
9	SEE NOTES	U5780900, U5781900	HANDLE RELEASE PEDAL - BLACK	N.A.
	11041024	U5780900, U5781900	HANDLE RELEASE PEDAL - REVISED BLACK	.75
10	13102101	U5780900, U5781900	LOWER HOSE	1.82
11	11041029	U5780900, U5781900	LOWER HOSE COVER	.54
12	11041030	U5780900, U5781900	LOWER HOSE HOLDER	1.37
13	11137020	U5780900, U5781900	BRUSH ROLL DUCT	4.84
14	21041008	U5780900, U5781900	BRUSH ROLL ASSEMBLY	17.41
	93002361	U5780900, U5781900	BRUSH ROLL ASSEMBLY - SUB	14.69
15	21041028	U5780900, U5781900	NOZZLE GUARD ASSEMBLY	3.78
16	11041084	U5780900, U5781900	FLAT BELT	2.10
	38528035	U5780900, U5781900	FLAT BELT - SUB	1.39 NON DISC
17	40201200	U5780900, U5781900	V-BELT	1.50 NON DISC
18	27313107	U5780900, U5781900	LIGHT BULB	3.09
19	93005300	U5780900, U5781900	IDLER ARM ASSEMBLY	4.45
20	93005400	U5780900, U5781900	PULLEY ASSEMBLY	10.80
21	93002447	U5780900, U5781900	SPRING - IDLER ASSEMBLY	.45

\*\*IF YOU HAVE A MODEL U5780-900 THAT WAS MFG PRIOR TO 9/2007 AND YOU NEED TO REPLACE THE HANDLE RELEASE PEDAL, YOU NEED TO ORDER THE FOLLOWING:

- 21151009 - FOOT / NOZZLE BASE ASSEMBLY
- 11041024 - HANDLE RELEASE PEDAL

THIS WILL UPDATE THE UNIT TO REFLECT A REVISION / NEW DESIGN OF THE HANDLE RELEASE PEDAL. THE NEW DESIGN HANDLE RELEASE PEDAL WILL NOT WORK IN AN EARLY DESIGN FOOT NOZZLE BASE.