



Wet Dry  
HandVac

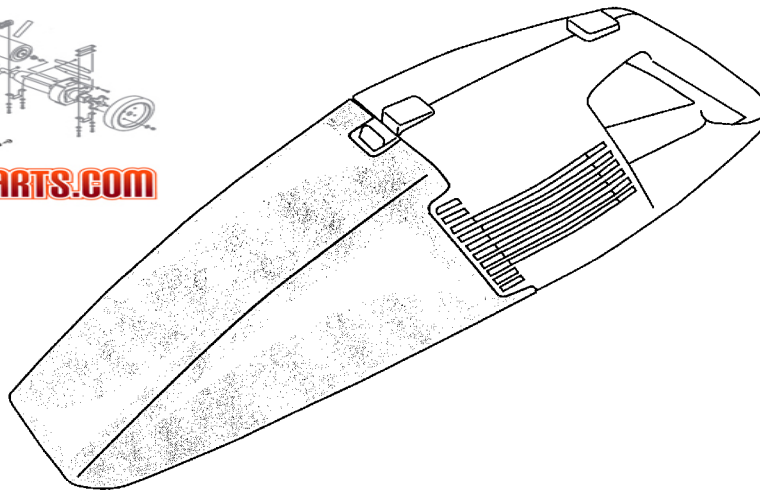
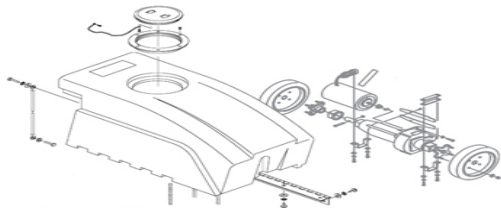
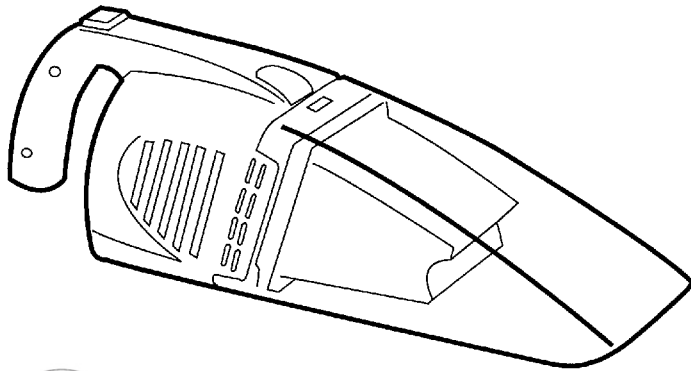


SECTION CONTENTS

<u>MODEL NO.</u>	<u>PAGE NO.</u>
S1120	20-2 THRU 20-3
L2020	20-4 THRU 20-5

MODEL NO.

L2020  
S1120



FLOOR-EQUIPMENT-PARTS.COM

- \* PRICING, SPECIFICATION'S, AND PRODUCT AVAILABILITY ARE SUBJECT TO CHANGE WITHOUT NOTICE. PRICING IS FOB FACTORY, CANTON, OH
- \* ALL INFORMATION CONTAINED WITHIN THIS SERVICE MANUAL IS PROPRIETARY INFORMATION OF TTI FLOOR CARE NORTH AMERICA.
- \* **WARNING:** TO REDUCE THE RISK OF ELECTRICAL SHOCK OR INJURY, ALWAYS DISCONNECT THE APPLIANCE CORD FROM THE ELECTRICAL OUTLET OR REMOVE BATTERY PRIOR TO SERVICING THE UNIT.



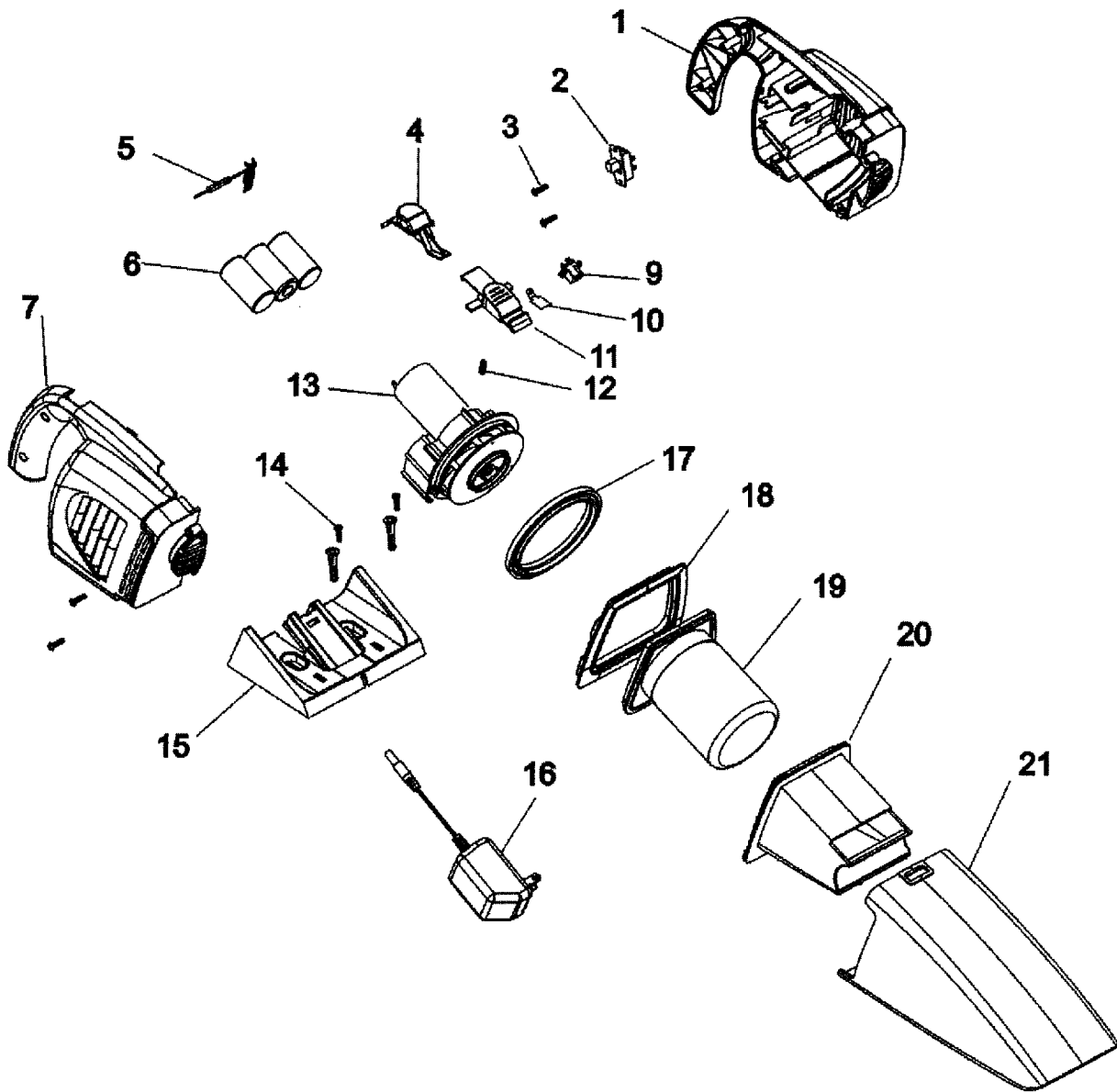
**Wet Dry**  
HandVac

20

ASSEMBLY SCHEMATIC

MODEL NO.

S1120





Wet Dry HandVac

20

PART LISTING / PRICE LIST

MODEL No.

S1120

ITEM	PART NUMBER	MODELS TO FIT	PART DESCRIPTION	LIST COST
1	93001489	S1120	HOUSING - LEFT	5.09
2	93001495	S1120	SWITCH	2.59
3	93001501	S1120	SCREW	.57
4	93001494	S1120	SWITCH BUTTON	.57
5	59139109	S1120	DIODE	N.L.A.
6	93001498	S1120	BATTERY PACK ASSEMBLY	25.50
7	93001490	S1120	HOUSING - RIGHT	5.09
8	59139108	S1120	SCREW	N.A.
9	93001497	S1120	DC JACK	.57
10	59139110	S1120	TEST TERMINAL	N.A.
11	93001492	S1120	LATCH BUTTON	.57
12	59139103	S1120	LATCH BUTTON SPRING	N.L.A.
13	93001499	S1120	MOTOR AND FAN ASSEMBLY	17.00
14	40201142	S1120	WALL RACK HARDWARE	N.A.
15	59139306	S1120	WALL RACK BRACKET	8.61
16	93001496	S1120	TRANSFORMER	7.70
17	59139118	S1120	HOUSING	N.A.
18	59139130	S1120	FILTER SEAL	3.39
19	93001491	S1120	FILTER SUPPORT ASSEMBLY	5.09
20	93001493	S1120	SEPARATOR	2.03
21	93001500	S1120	DIRT CUP	6.00