



# télios canister duros™

WindTunnel  
Canister Cleaner

MAYTAG  
Legacy  
Series

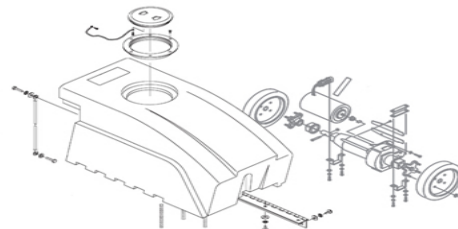
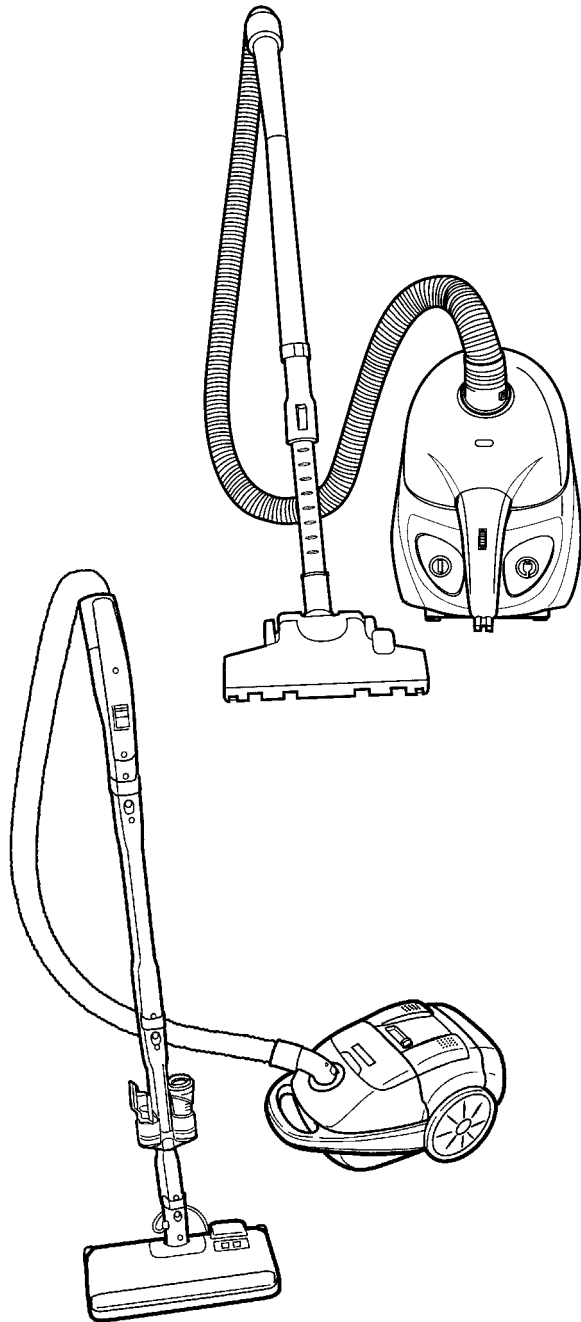
# 16

## SECTION CONTENTS

<u>MODEL NO.</u>	<u>PAGE NO.</u>
S1361	16-2 THRU 16-4
S3332	16-5 THRU 16-7
S3590	16-8 THRU 16-14
S3591	16-8 THRU 16-14
S3592	16-8 THRU 16-14
S3670	16-15 THRU 16-18

## MODEL NO.

S1361  
S3332  
S3590  
S3591  
S3592  
S3670



**FLOOR-EQUIPMENT-PARTS.COM**

- \* PRICING, SPECIFICATION'S, AND PRODUCT AVAILABILITY ARE SUBJECT TO CHANGE WITHOUT NOTICE. PRICING IS FOB FACTORY, CANTON, OH
- \* ALL INFORMATION CONTAINED WITHIN THIS SERVICE MANUAL IS PROPRIETARY INFORMATION OF TTI FLOOR CARE NORTH AMERICA.
- \* **WARNING:** TO REDUCE THE RISK OF ELECTRICAL SHOCK OR INJURY, ALWAYS DISCONNECT THE APPLIANCE CORD FROM THE ELECTRICAL OUTLET OR REMOVE BATTERY PRIOR TO SERVICING THE UNIT.



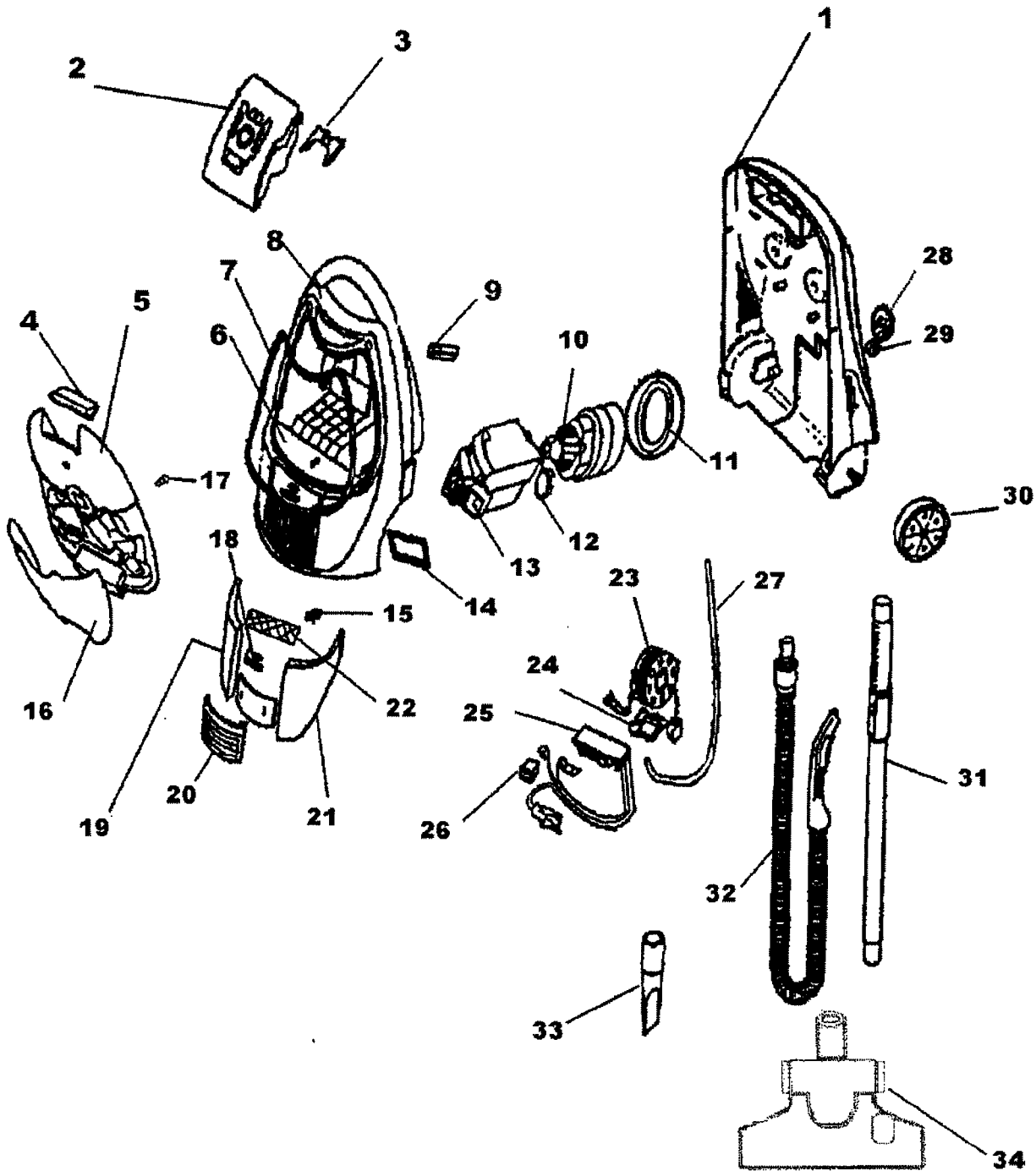
# télios™

# 16

## ASSEMBLY SCHEMATIC

MODEL NO.

S3332





# télios™

# 16

## PART LISTING / PRICE LIST

MODEL No.

**S3332**

ITEM	PART NUMBER	MODELS To FIT	PART DESCRIPTION	LIST COST
1	59135008	S3332	LOWER BODY BASE ASSEMBLY	15.87
2	40101001	S3332	TYPE H-30 FILTER BAGS - 5 PACK + 3 FILTERS	4.99 <small>NON DISC</small>
3	59135039	S3332	BAG HOLDER	2.59
4	59135015	S3332	BAG DOOR LATCH	1.12
5	59135013	S3332	BAG DOOR - METALLIC RED	9.74
6	59135054	S3332	CONTROL PANEL	4.07
7	59135025	S3332	BAG DOOR SEAL	1.12
8	59135007	S3332	UPPER BODY WITH HANDLE	22.67
9	59135026	S3332	BAG CHECK INDICATOR	1.81
10	59135005	S3332	MOTOR	68.03
11	59135004	S3332	FAN CASE SEAL	5.66
12	59135006	S3332	REAR MOTOR MOUNT	1.12
13	59135055	S3332	MOTOR HOUSING	7.48
14	59135024	S3332	MOTOR HOUSING SEAL	1.12
15	59135037	S3332	PEDAL SPRING	1.12
16	59135034	S3332	TOOL COVER - METALLIC RED	7.48
17	59135036	S3332	SPRING	1.12
18	59135056	S3332	SPEED CONTROL KNOB	1.12
19	59135050	S3332	ON/OFF PEDAL - METALLIC RED	4.53
20	59135032	S3332	FILTER COVER - METALLIC RED	2.94
21	59135052	S3332	CORD REEL PEDAL - RED	4.53
22		S3332	NOISE REDUCER	N.A.
23	59135060	S3332	CORD REEL COMPLETE	32.88
24	59135038	S3332	PLUG POCKET	1.12
25	59135030	S3332	SPEED CONTROL MODULE	19.83
26	59135031	S3332	PUSH SWITCH	4.53
27	59135029	S3332	BAG CHECK INDICATOR TUBE	1.12
28	59135012	S3332	CASTER WHEEL SUPPORT	1.12
29	59135011	S3332	TIRE AXLE	1.12
30	59135010	S3332	REAR WHEEL	4.53
31	59135019	S3332	EXTENSION TUBE	27.21
32	59135018	S3332	HOSE ASSEMBLY COMPLETE	18.13
33	59135021	S3332	CREVICE TOOL	3.39
34	59136026	S3332	FLOOR NOZZLE COMPLETE	9.74
	59136049	S3332	FLOOR NOZZLE BRUSH	1.12



# télios™

# 16

## PART LISTING / PRICE LIST

ITEM	PART NUMBER	MODELS TO FIT	PART DESCRIPTION	LIST COST
	59135085	S3332	RED LEAD WITH FUSE	1.46
	59135086	S3332	MOTOR HOUSING FOAM	2.59
	59135022	S3332	FURNITURE NOZZLE	3.39
	59135023	S3332	FURNITURE BRUSH	4.53
	59135016	S3332	SCREW	1.12
	59135049	S3332	VENT TUBE	1.12
	59135061	S3332	POTENTIOMETER / HARNESS	4.07

MODEL No.

S3332