



télios canister duros™

WindTunnel
Canister Cleaner

MAYTAG
Legacy
Series

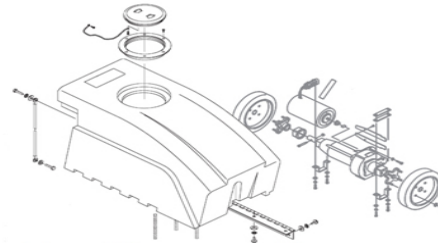
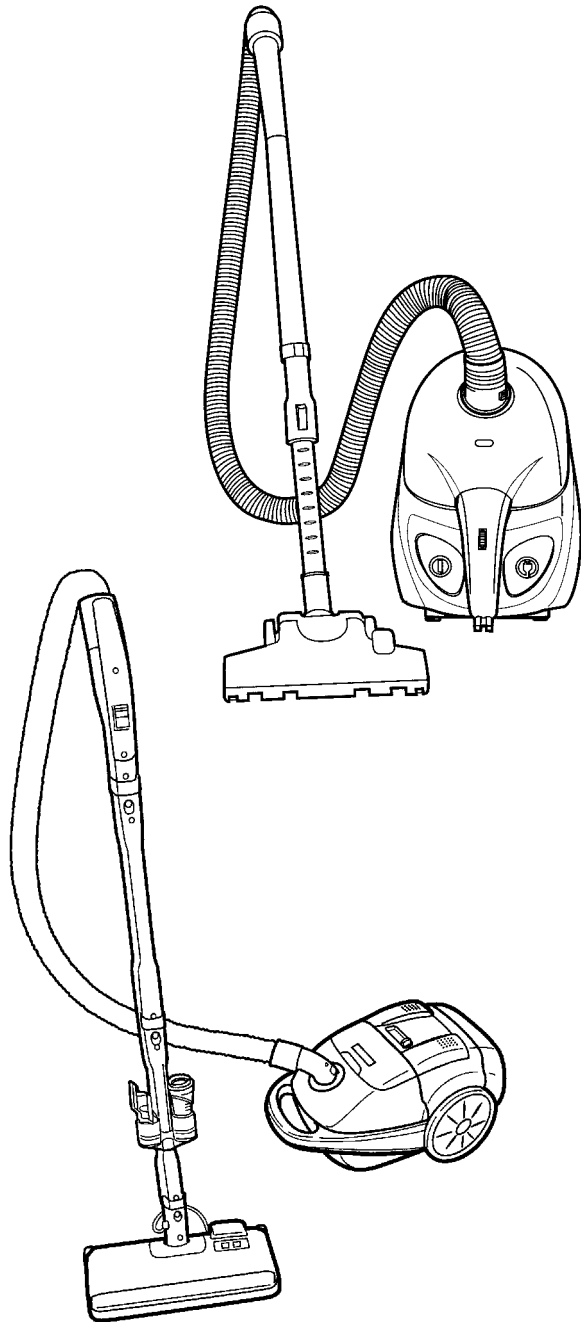
16

SECTION CONTENTS

<u>MODEL NO.</u>	<u>PAGE NO.</u>
S1361	16-2 THRU 16-4
S3332	16-5 THRU 16-7
S3590	16-8 THRU 16-14
S3591	16-8 THRU 16-14
S3592	16-8 THRU 16-14
S3670	16-15 THRU 16-18

MODEL NO.

S1361
S3332
S3590
S3591
S3592
S3670



FLOOR-EQUIPMENT-PARTS.COM

- * PRICING, SPECIFICATION'S, AND PRODUCT AVAILABILITY ARE SUBJECT TO CHANGE WITHOUT NOTICE. PRICING IS FOB FACTORY, CANTON, OH
- * ALL INFORMATION CONTAINED WITHIN THIS SERVICE MANUAL IS PROPRIETARY INFORMATION OF TTI FLOOR CARE NORTH AMERICA.
- * **WARNING:** TO REDUCE THE RISK OF ELECTRICAL SHOCK OR INJURY, ALWAYS DISCONNECT THE APPLIANCE CORD FROM THE ELECTRICAL OUTLET OR REMOVE BATTERY PRIOR TO SERVICING THE UNIT.



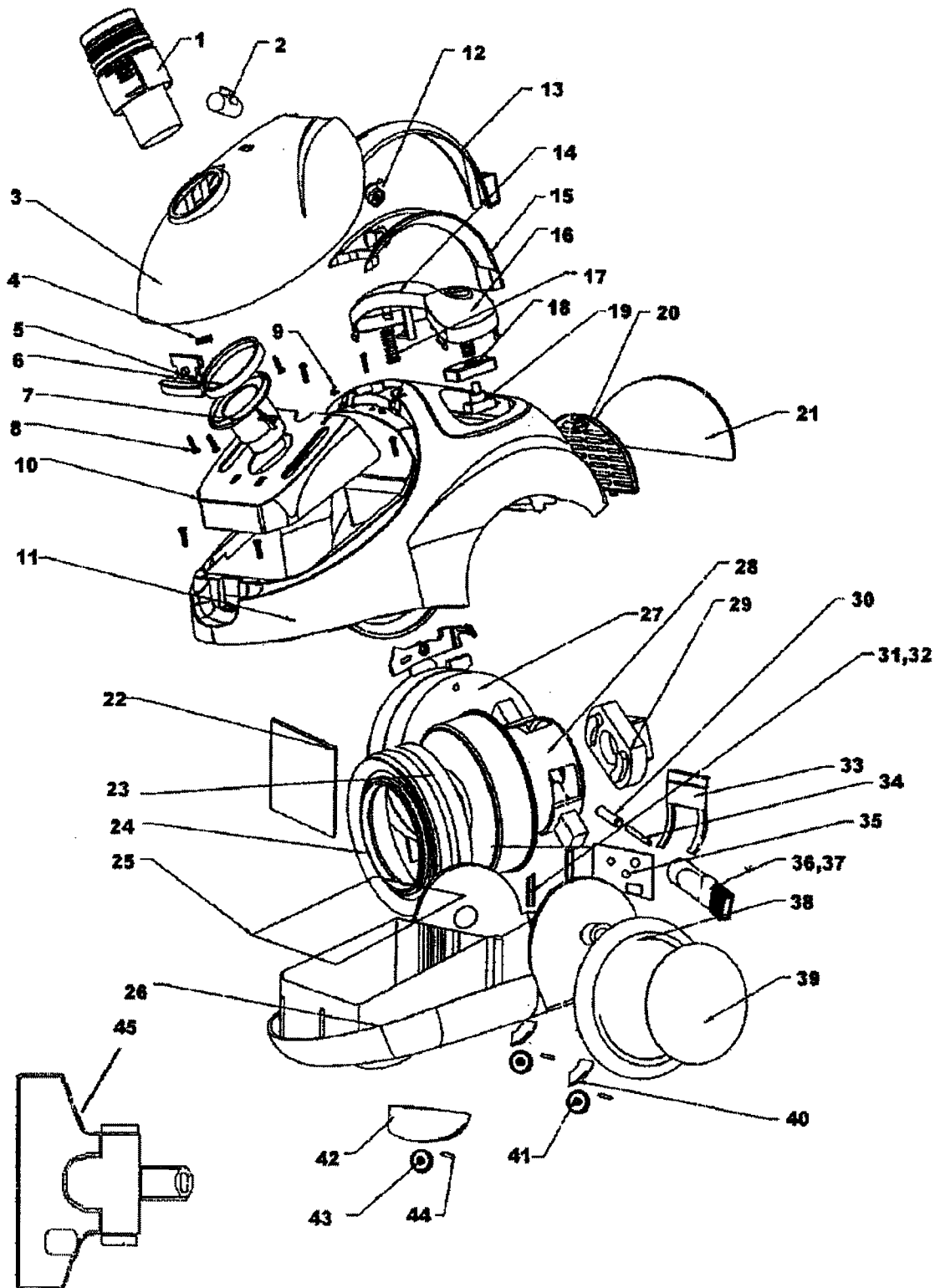
canister

16

ASSEMBLY SCHEMATIC

MODEL NO.

S1361





canister

16

PART LISTING / PRICE LIST

MODEL No.

S1361

ITEM	PART NUMBER	MODELS TO FIT	PART DESCRIPTION	LIST COST
1	59135248	S1361	HOSE ASSEMBLY	18.13
2	59135215	S1361	FULL BAG INDICATOR	2.26
3	59135216	S1361	BAG COVER DOOR	9.74
4	59135217	S1361	BAG DOOR LATCH SPRING	1.46
5	59135218	S1361	BAG DOOR LATCH	1.12
6		S1361	HOSE CONNECT SEAL	N.A.
7		S1361	HOSE CONNECT TUBE	N.A.
8	59135205	S1361	SCREW	.57
9	59135220	S1361	DOOR SPRING WEDGE	1.12
10	59135207	S1361	BAG HOLDER	2.59
11	59135211	S1361	UPPER HOUSING	9.87
12	59135212	S1361	SPEED CONTROL KNOB	1.12
13	59135214	S1361	UPPER HANDLE	4.53
14	59135200	S1361	CORD REEL PEDAL	4.53
15	59135213	S1361	LOWER HANDLE	4.53
16	59135201	S1361	SWITCH PEDAL	4.53
17	59135202	S1361	PEDAL SPRING	1.46
18	59135209	S1361	SWITCH COVER	1.12
19	59135210	S1361	SWITCH	2.26
20	59135203	S1361	EXHAUST GRILL	1.12
21	59135204	S1361	EXHAUST FILTER	1.04
22	59135238	S1361	SECONDARY / INLET FILTER	1.04
23	59135223	S1361	FOAM MOTOR SEAL	5.66
24	59135230	S1361	MOTOR SEAL	1.12
25	59135237	S1361	BAG LID SEAL	1.12
26	59135247	S1361	LOWER HOUSING	15.87
27	59135229	S1361	CORD REEL	32.88
28	59135222	S1361	MOTOR	42.70
29	59135221	S1361	UPPER MOTOR MOUNT	2.26
30	59135243	S1361	CORD INLET ROLLER	1.12
31	59135225	S1361	WIRE SEAL - LONG	1.12
32	59135236	S1361	WIRE SEAL - SHORT	1.12
33	59135226	S1361	CORD GUIDE	1.12
34	59135244	S1361	ROLLER PIN	1.12
35	59135227	S1361	SPEED CONTROL BOARD	9.06
36	59135231	S1361	CREVICE TOOL	3.39



canister

16

PART LISTING / PRICE LIST

MODEL No.

S1361

ITEM	PART NUMBER	MODELS To FIT	PART DESCRIPTION	LIST COST
37	59135232	S1361	BRUSH	1.12
38	59135245	S1361	REAR WHEEL	4.53
39	59135246	S1361	WHEEL COVER	1.12
40	59135234	S1361	WHEEL CARRIAGE	1.12
41	59135235	S1361	LOWER REAR WHEEL	1.12
42		S1361	NOT AVAILABLE	N.A.
43	59135239	S1361	CASTER WHEEL	1.12
44	59135240	S1361	CASTER WHEEL AXLE	1.12
45	59136026	S1361	FLOOR NOZZLE COMPLETE	9.74
	59136049	S1361	FLOOR NOZZLE BRUSH	1.12
	59135249	S1361	TELESCOPIC EXTENSION TUBE	27.21
	59135233	S1361	SCREW WHEEL CARRIAGE	.57
	59135224	S1361	INSULATION PAPER	1.12
	59135219	S1361	SCREW HANDLE	.57
	59135208	S1361	SCREW COVER	.57
	40101002	S1361	TYPE R-30 FILTER BAG - 5 PACK + 2 FILTERS	2.99 <small>NON DISC</small>