



télios canister duros™

WindTunnel
Canister Cleaner

MAYTAG
Legacy
Series

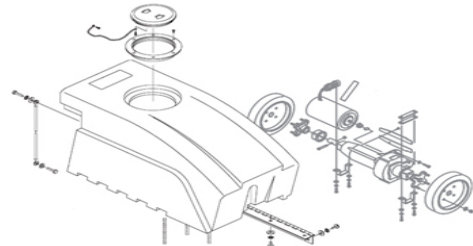
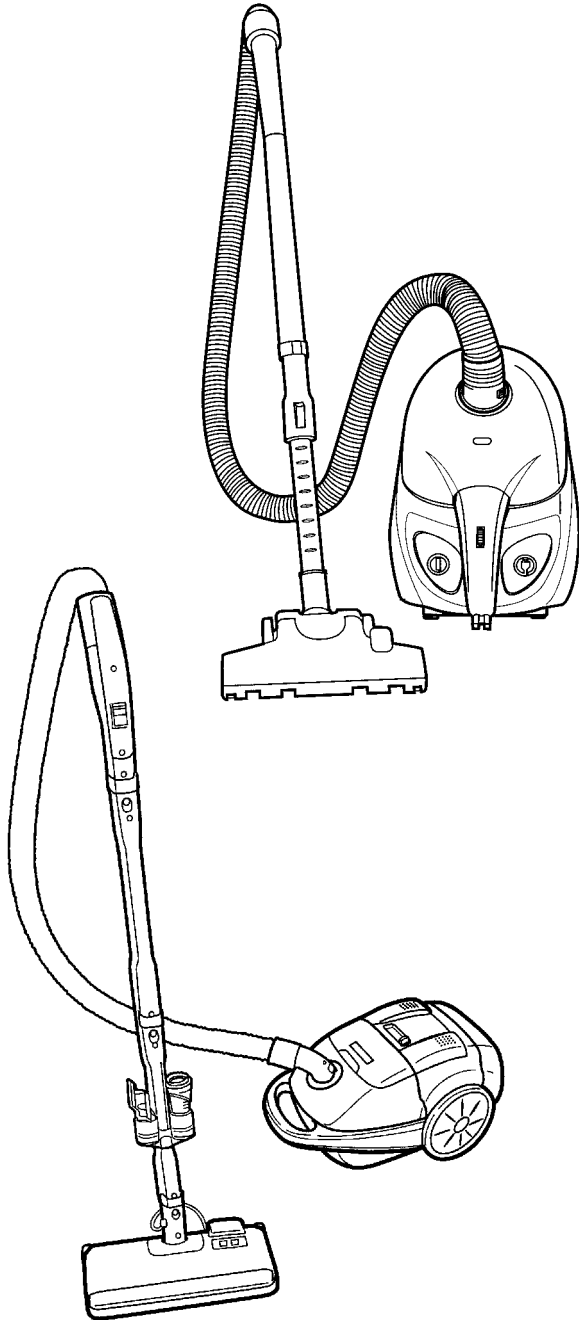
16

SECTION CONTENTS

<u>MODEL NO.</u>	<u>PAGE NO.</u>
S1361	16-2 THRU 16-4
S3332	16-5 THRU 16-7
S3590	16-8 THRU 16-14
S3591	16-8 THRU 16-14
S3592	16-8 THRU 16-14
S3670	16-15 THRU 16-18

MODEL No.

S1361
S3332
S3590
S3591
S3592
S3670



FLOOR-EQUIPMENT-PARTS.COM

- * PRICING, SPECIFICATION'S, AND PRODUCT AVAILABILITY ARE SUBJECT TO CHANGE WITHOUT NOTICE. PRICING IS FOB FACTORY, CANTON, OH
- * ALL INFORMATION CONTAINED WITHIN THIS SERVICE MANUAL IS PROPRIETARY INFORMATION OF TTI FLOOR CARE NORTH AMERICA.
- * **WARNING:** TO REDUCE THE RISK OF ELECTRICAL SHOCK OR INJURY, ALWAYS DISCONNECT THE APPLIANCE CORD FROM THE ELECTRICAL OUTLET OR REMOVE BATTERY PRIOR TO SERVICING THE UNIT.



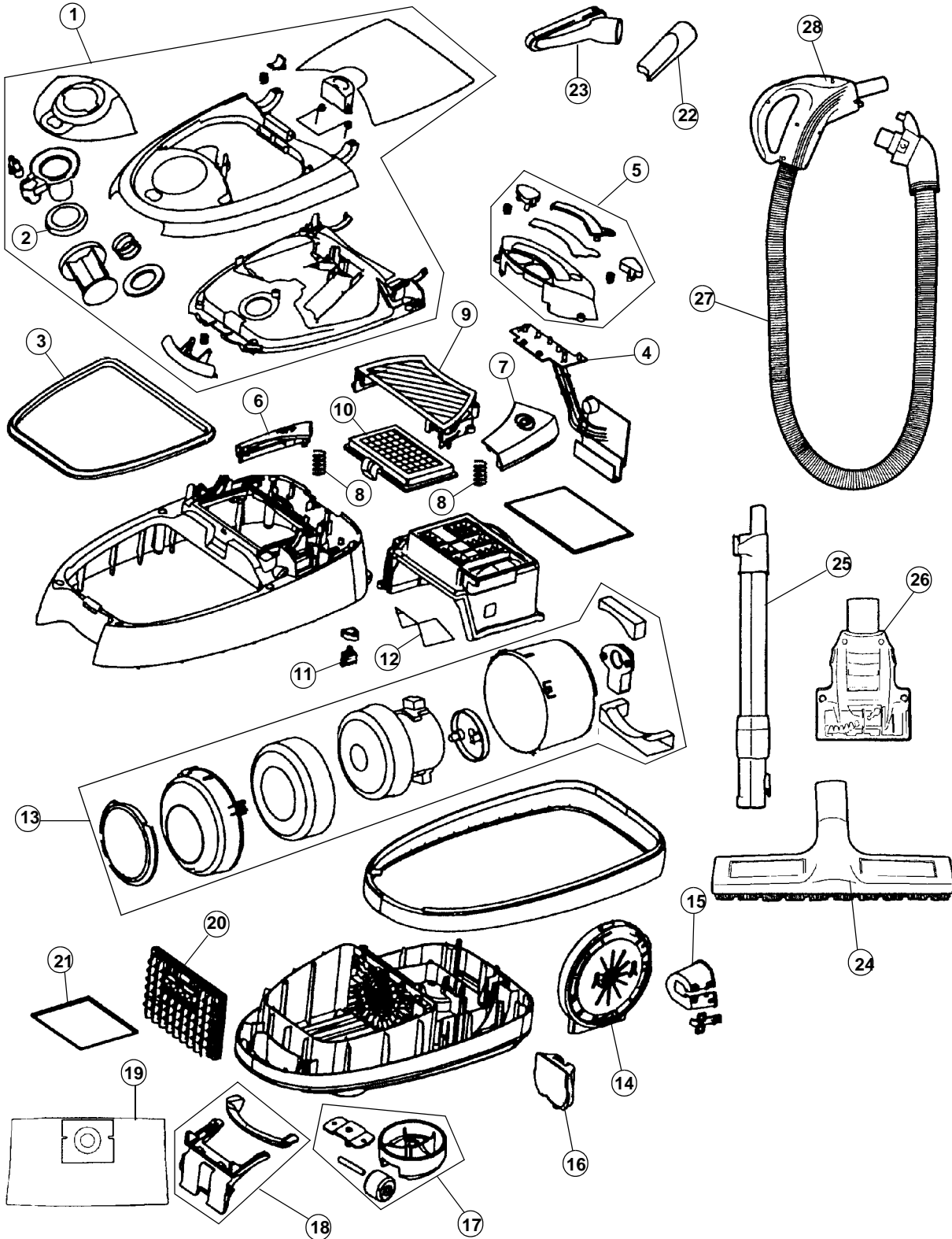
WindTunnel Canister Cleaner

16

ASSEMBLY SCHEMATIC

MODEL NO.

S3670





WindTunnel Canister Cleaner

16

PART LISTING / PRICE LIST

MODEL No.

S3670

ITEM	PART NUMBER	MODELS TO FIT	PART DESCRIPTION	LIST COST
1	59142044	S3670	BAG LID ASSEMBLY	15.47
2	59142030	S3670	SEAL - BAG COLLAR	.88
3	59142031	S3670	SEAL - BAG LID	1.61
4	59142023	S3670	PCB ASSEMBLY WITH LED	44.80
5	59142024	S3670	DISPLAY COVER ASSEMBLY	2.91
6	59142025	S3670	SWITCH PEDAL	1.12
7	59142026	S3670	CORD REEL PEDAL	1.12
8	59142027	S3670	SPRING - SWITCH / CORD REEL PEDAL	.88
9	59142028	S3670	EXHAUST FILTER COVER	4.20
10	59142013	S3670	EXHAUST FILTER ASSEMBLY	7.14
11	59142034	S3670	POWER SWITCH	2.03
12	59142032	S3670	SEAL - MOTOR COVER	.88
13	59142015	S3670	MOTOR ASSEMBLY COMPLETE	51.29
14	59142033	S3670	CORD REEL ASSEMBLY	42.77
15	59142035	S3670	CORD GUIDE	1.47
16	59142018	S3670	HOLDER - WAND STORAGE	.98
17	59142037	S3670	CASTER WHEEL ASSEMBY	2.24
18	59142017	S3670	BAG HOLDER	1.12
19	59138327	S3670	TYPE S BAG - HEPA	N.A.
	4010808S	S3670	TYPE S BAG - 2 PACK HEPA	3.30 NON DISC
	4010100S	S3670	TYPE S BAG - 3 PACK ALLERGEN	3.62 NON DISC
20	59142016	S3670	FILTER RETAINER / HOLDER - INNER FILTER	2.03
21	59142009	S3670	INLET / SECONDARY FILTER	1.09
22	59142021	S3670	CREVICE TOOL	.91
23	59142020	S3670	COMBINATION TOOL - DUSTING/FURNITURE	2.80
24	59142038	S3670	HARD FLOOR BRUSH ASSEMBLY	10.99
25	59142019	S3670	TELESCOPIC WAND ASSEMBLY	51.17
26	92001019	S3670	TURBINE HAND TOOL	18.13
27	59142012	S3670	HOSE ASSEMBLY	42.63
28	59142022	S3670	SWITCH AND WIRING HARNESS - HOSE	5.60



WindTunnel Canister Cleaner

16

PART LISTING / PRICE LIST

MODEL No.

S3670

ITEM	PART NUMBER	MODELS TO FIT	PART DESCRIPTION	LIST COST
1	37253A81	S3670	HOOD / NOZZLE COVER	PENDING
2	39383142	S3670	DIRT FINDER LENS	.40
3	51669095	S3670	NAME PLATE	3.39
4	47171020	S3670	SOCKET ASSEMBLY	4.53
5	27317307	S3670	LIGHT BULB	6.20
6	21447003	S3670	SCREW - SELF TAPPING	.57
7	38464102	S3670	QUICK DISCONNECT ASSEMBLY	7.07
8		S3670	POWER CORD - QUICK DISCONNECT ORDER 38464102	N.A.
9	27482146	S3670	STRAIN RELIEF	N.L.A.
10	90001369	S3670	MOTOR ASSEMBLY	85.04
11	36218026	S3670	ISOLATION GROMMET	.88
12	37243066	S3670	DUCT COVER	3.29
13	34113008	S3670	SEAL - DUCT COVER	1.12
14	37243067	S3670	BRUSH ROLL COVER ASSEMBLY	13.44
	37243030	S3670	DUCT COVER - BRUSH ROLL	3.39
	21479449	S3670	SCREW - BRUSH ROLL DUCT COVER	1.12
15	34112007	S3670	SEAL	1.12
16	34122014	S3670	SEAL	1.12
17	35276008	S3670	DETENT SPRING	N.L.A.
18	37245104	S3670	BASE PLATE / NOZZLE GUARD ASSEMBLY	21.92
19	39511004	S3670	LITTER PICKER	2.26
20	32761001	S3670	FRONT WHEEL	2.26
21	31522004	S3670	SHAFT - FRONT WHEEL	1.12
22	38522100	S3670	REAR WHEEL	PENDING
23	38511031	S3670	WHEEL BEARING	PENDING
24	21447236	S3670	SCREW - SELF TAPPING	1.12
25	21479801	S3670	SCREW - SELF TAPPING	.57
26	90001372	S3670	BRUSH ROLL ASSEMBLY - 15"	22.67
27	36422022	S3670	END CAPS - BRUSH ROLL	1.69
28	38528036	S3670	BELT	.85 NON DISC
	48438299	S3670	POWER NOZZLE COMPLETE	173.72