



SteamVac™

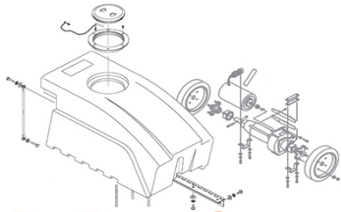
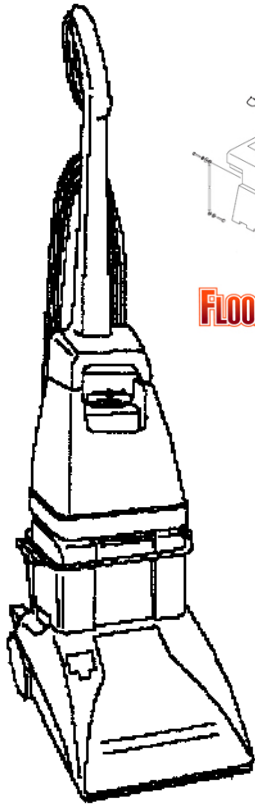


SteamVac™
with
CLEAN
SURGE™

15

SteamVac™
agility STEAM VAC™
DUAL V™

STEAM VAC™
ALL TERRAIN



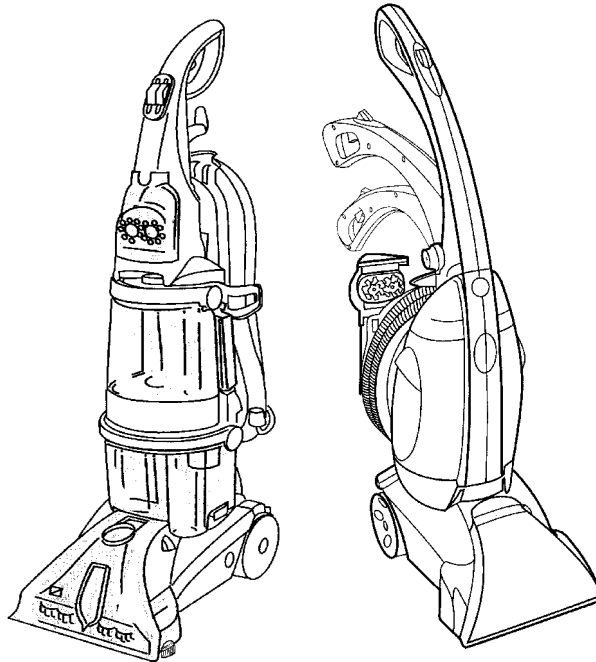
FLOOR-EQUIPMENT-PARTS.COM

SECTION CONTENTS

<u>MODEL No.</u>	<u>PAGE No.</u>
F5810	15-2 THRU 15-4
F5914-900	15-5 THRU 15-9
F5915-900	15-5 THRU 15-9
F5917-900	15-5 THRU 15-9
F5918-900	15-5 THRU 15-9
FH50045	15-5 THRU 15-9
F6207-900	15-10 THRU 15-15
F6212-900	15-10 THRU 15-15
F6215-900	15-10 THRU 15-15
F7222-900	15-16 THRU 15-24
F7452-900	15-16 THRU 15-24

MODEL No.

- F5810
- F5914-900
- F5915-900
- F5917-900
- F5918-900
- F6207-900
- F6212-900
- F6215-900
- F7222-900
- F7452-900
- FH50045



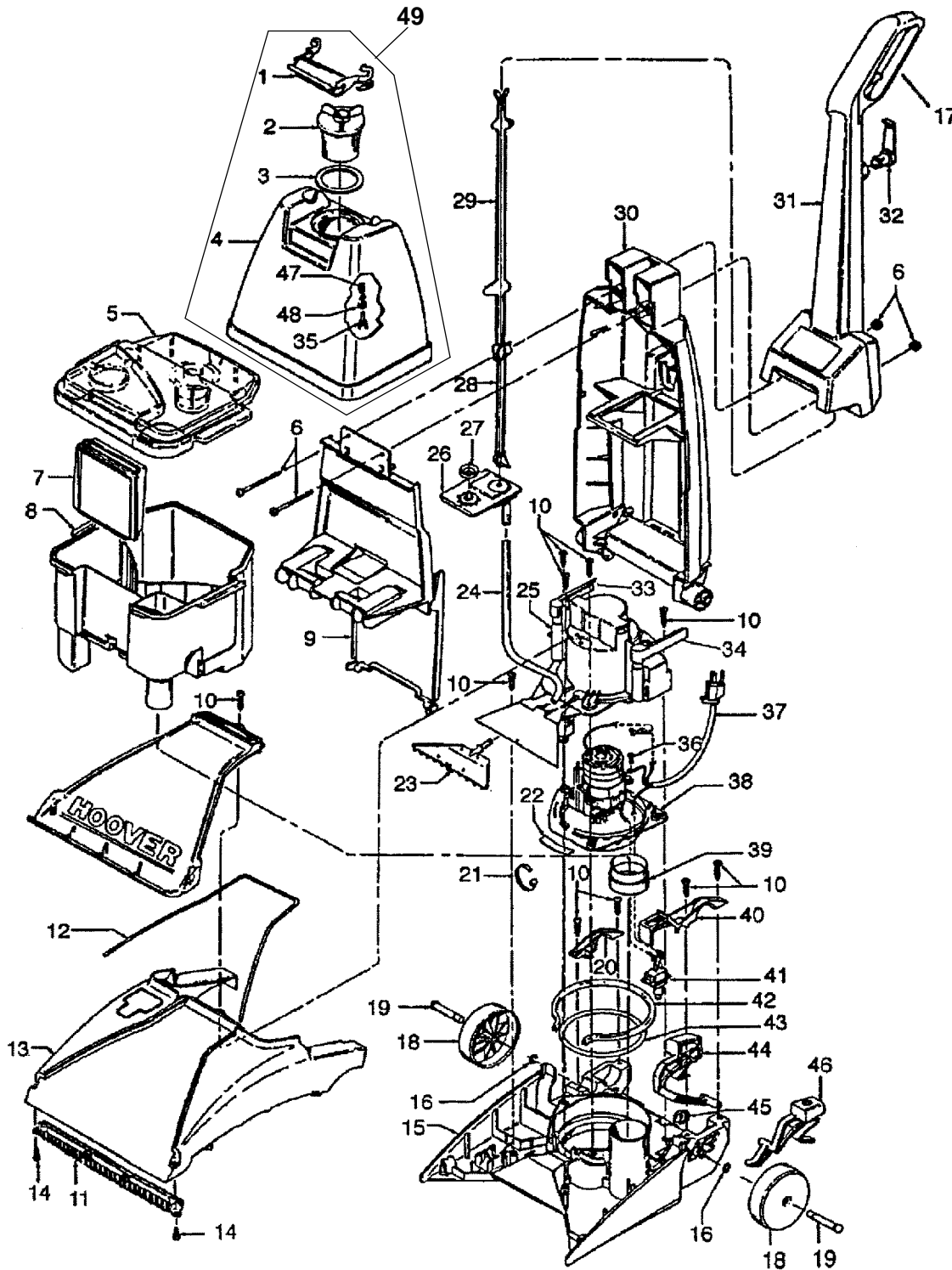
- * PRICING, SPECIFICATION'S, AND PRODUCT AVAILABILITY ARE SUBJECT TO CHANGE WITHOUT NOTICE. PRICING IS FOB FACTORY, CANTON, OH
- * ALL INFORMATION CONTAINED WITHIN THIS SERVICE MANUAL IS PROPRIETARY INFORMATION OF TTI FLOOR CARE NORTH AMERICA.
- * **WARNING:** TO REDUCE THE RISK OF ELECTRICAL SHOCK OR INJURY, ALWAYS DISCONNECT THE APPLIANCE CORD FROM THE ELECTRICAL OUTLET OR REMOVE BATTERY PRIOR TO SERVICING THE UNIT.



ASSEMBLY SCHEMATIC

MODEL NO.

F5810





15

PART LISTING / PRICE LIST

MODEL No.

F5810

ITEM	PART NUMBER	MODELS To FIT	PART DESCRIPTION	LIST COST
1	39457053	F5810	SOLUTION TANK HANDLE	2.17
2	90001288	F5810	CAP ASSEMBLY - BLACK	1.69
3	38784062	F5810	GASKET	1.46
4	42272134	F5810	SOLUTION TANK ASSEMBLY	34.01
5	42272111	F5810	RECOVERY TANK LID	34.01
6	40201145	F5810	HANDLE HARDWARE ASSEMBLY	2.26
7	90001217	F5810	DUCT	4.01
8	38777081	F5810	RECOVERY TANK	49.67
9	37276029	F5810	HANDLE COVER	9.74
10	21447020	F5810	SCREW	.57
11	48447002	F5810	BRUSH BLOCK ASSEMBLY- DUAL	7.93
12	38781037	F5810	NOZZLE SEAL	2.59
13	37271124	F5810	NOZZLE HOOD	30.31
14	21447228	F5810	SCREW - SELF TAPPING	.57
15	90001221	F5810	NOZZLE BASE	21.54
16	160017--	F5810	LOCK RING	.58
17	39458009	F5810	UPPER HANDLE LEVER GUARD	2.10
18	38522091	F5810	REAR WHEEL	1.47
19	32434007	F5810	REAR AXLE	1.12
20		F5810	TRUNNION COVER - RIGHT	N.A.
21	27479307	F5810	CABLE TIE	.45
22	34122021	F5810	MOTOR HOUSING SEAL	.67
23	43411006	F5810	DISTRIBUTOR ASSEMBLY	6.79
24	40309002	F5810	TUBING	3.73
25	40309005	F5810	MOTOR / MOTOR DISTRIBUTION COVER KIT	15.87
26	90001225	F5810	RESERVOIR ASSEMBLY	6.79
27	38784060	F5810	SOLUTION TANK SEAL	1.46
28	38458033	F5810	CONTROL ROD - LOWER	1.46
29	38458031	F5810	CONTROL ROD - UPPER	1.81
30	48669030	F5810	LOWER HANDLE ASSEMBLY COMPLETE	43.40
31	92001072	F5810	UPPER HANDLE ASSEMBLY	19.83
32	39442048	F5810	CORD WRAP	1.14
33	90001228	F5810	TANK RELEASE LATCH - RIGHT	2.26
34	90001229	F5810	TANK RELEASE LATCH - LEFT	2.26
35	38717009	F5810	VALVE STEM	2.26
36	21447232	F5810	SCREW - SELF TAPPING	.57



15

PART LISTING / PRICE LIST

MODEL No.

F5810

ITEM	PART NUMBER	MODELS TO FIT	PART DESCRIPTION	LIST COST
37	93002227	F5810	POWER CORD	14.16
38	43576203	F5810	MOTOR ASSEMBLY	91.79
39	38784063	F5810	STANDPIPE SEAL	3.39
40		F5810	TRUNNION COVER - LEFT	N.A.
41	28218061	F5810	SWITCH	2.80
42	38781039	F5810	MOTOR BASE SEAL	2.59
43	38784064	F5810	MOTOR INTAKE SEAL	4.53
44	38458042	F5810	HANDLE RELEASE LEVER	4.07
45	90001184	F5810	CORD RETAINER	N.L.A.
46	38434025	F5810	SWITCH ACTUATOR LEVER	3.39
47		F5810	SPRING	
48	38784061	F5810	VALVE SEAL	1.12
49	42272134	F5810	SOLUTION TANK ASSEMBLY WITH CAP	34.01