



SteamVac™

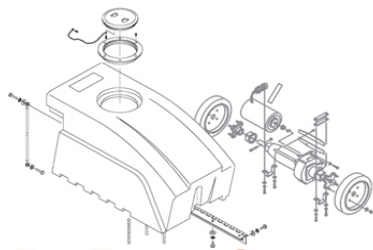
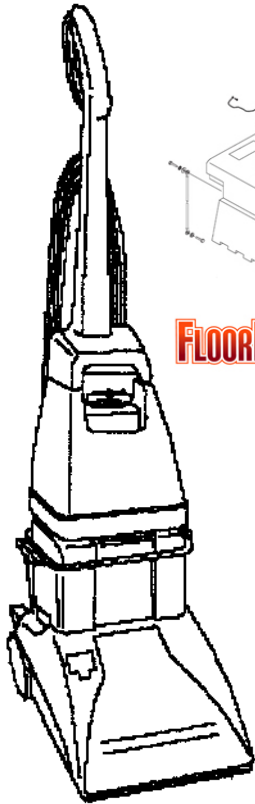


SteamVac™  
with  
CLEAN  
SURGE™

15

SteamVac™  
**agility** STEAM VAC™  
DUAL V™

STEAM VAC™  
ALL TERRAIN



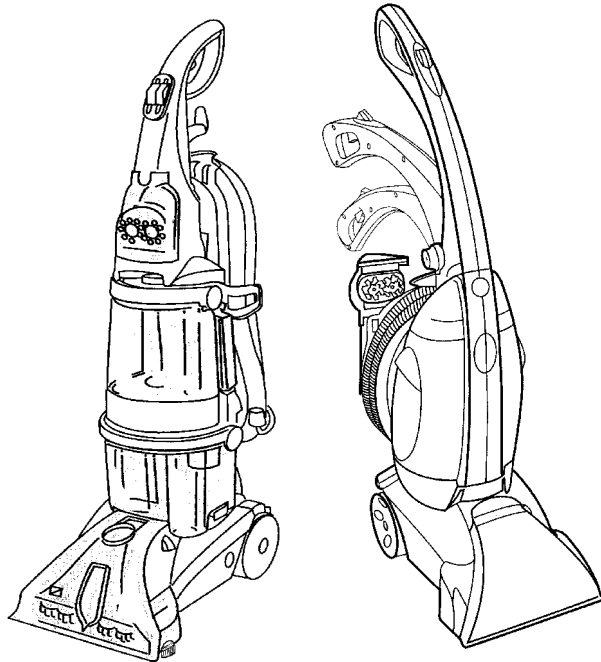
FLOOR-EQUIPMENT-PARTS.COM

SECTION CONTENTS

<u>MODEL No.</u>	<u>PAGE No.</u>
F5810	15-2 THRU 15-4
F5914-900	15-5 THRU 15-9
F5915-900	15-5 THRU 15-9
F5917-900	15-5 THRU 15-9
F5918-900	15-5 THRU 15-9
FH50045	15-5 THRU 15-9
F6207-900	15-10 THRU 15-15
F6212-900	15-10 THRU 15-15
F6215-900	15-10 THRU 15-15
F7222-900	15-16 THRU 15-24
F7452-900	15-16 THRU 15-24

MODEL No.

- F5810
- F5914-900
- F5915-900
- F5917-900
- F5918-900
- F6207-900
- F6212-900
- F6215-900
- F7222-900
- F7452-900
- FH50045



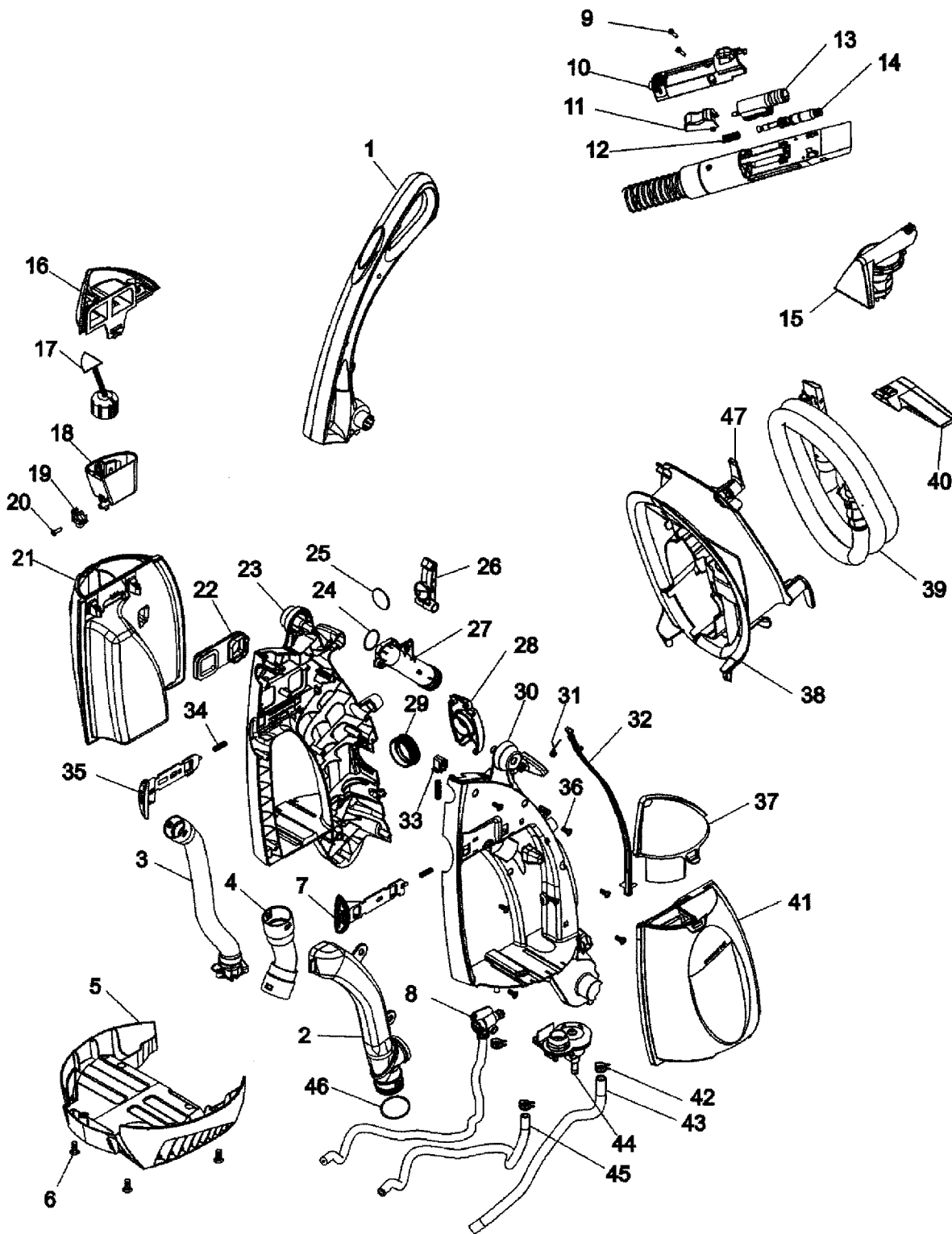
- \* PRICING, SPECIFICATION'S, AND PRODUCT AVAILABILITY ARE SUBJECT TO CHANGE WITHOUT NOTICE. PRICING IS FOB FACTORY, CANTON, OH
- \* ALL INFORMATION CONTAINED WITHIN THIS SERVICE MANUAL IS PROPRIETARY INFORMATION OF TTI FLOOR CARE NORTH AMERICA.
- \* **WARNING:** TO REDUCE THE RISK OF ELECTRICAL SHOCK OR INJURY, ALWAYS DISCONNECT THE APPLIANCE CORD FROM THE ELECTRICAL OUTLET OR REMOVE BATTERY PRIOR TO SERVICING THE UNIT.



# SteamVac™ agility™

15

## ASSEMBLY SCHEMATIC



### MODEL NO.

F6207-900  
F6212-900  
F6215-900



SteamVac™  
**agility™**

15

PART LISTING / PRICE LIST

MODEL No.

F6207-900  
 F6212-900  
 F6215-900

ITEM	PART NUMBER	MODELS TO FIT	PART DESCRIPTION	LIST COST
1	90001045	F6212-900, F6215-900	UPPER HANDLE ASSEMBY	21.54
	39466096	F6207-900	UPPER HANDLE ASSEMBY	19.74
2	90001110	ALL	SOLUTION DUCT	3.96
3	90001079	ALL	AIR HOSE COMPLETE	11.33
4	90001080	ALL	RECOVERY HOSE COMPLETE	11.33
5	90001069	ALL	LOWER HANDLE COVER	11.33
6	21447003	ALL	SCREW	.57
7	90001054	ALL	SOLUTION TANK RELEASE LATCH	2.59
8	90001095	ALL	QUICK DISCONNECT ASSEMBLY	5.84
9	21447239	ALL	SCREW	.57
10	92001002	F6212-900, F6215-900	WAND COVER	1.12
	37276006	F6207-900	WAND COVER	1.12
11	38433074	ALL	TRIGGER	1.12
12	38312019	ALL	SPRING	1.12
13	91001059	ALL	WAND VALVE ASSEMBLY - SMALL NIPPLE	1.69
14	43412007	ALL	NOZZLE / VALVE ASSEMBLY	4.53
15	91001003	ALL	TURBINE NOZZLE	34.01
	48434006	ALL	BRUSH ASSEMBLY - TURBINE	6.79
	38613038	ALL	NOZZLE BODY - TURBINE	15.70
16	90001282	F6212-900	RECOVERY LID COVER ASSEMBLY	15.87
	90001089	F6215-900	RECOVERY LID COVER ASSEMBLY - LAVENDAR MIST	15.87
	37274112	F6207-900	RECOVERY LID COVER ASSEMBLY - FROST TRANSLUCENT MEDIUM	15.87
17	90001041	ALL	FLOAT	2.26
18	90001040	ALL	SEPARATOR CHANNEL	4.53
19	90001042	ALL	FLOAT GLIDE	2.59
20		ALL	SCREW - SELF TAPPING	N.A.
21	90001038	F6212-900	RECOVERY TANK COMPLETE <b>ORDER 42272169</b>	N.L.A.
	42272169	F6215-900	RECOVERY TANK COMPLETE - LAVENDER	33.64
	42272175	F6207-900	RECOVERY TANK COMPLETE - FROST <b>ORDER 42272169</b>	N.L.A.
22	38783034	ALL	SEAL	1.05
23	90001049	ALL	LOWER HANDLE ASSEMBLY - RIGHT	28.34
24	90001103	ALL	O-RING HOSE ENDS	.74
25	51661020	ALL	MEDALLION	1.46



15

PART LISTING / PRICE LIST

ITEM	PART NUMBER	MODELS TO FIT	PART DESCRIPTION	LIST COST
26	90001352	ALL	LATCH UPPER HANDLE	2.26
27	90001077	ALL	AIR RETURN ELBOW	N.A.
28	90001071	ALL	DOOR - TOOL PORT	3.39
29	90001078	ALL	SEAL - TOOL PORT	3.39
30	39466085	ALL	LOWER HANDLE ASSEMBLY - LEFT	21.49
31	90001048	ALL	SPRING	1.12
32	90001053	ALL	CONTROL ROD - LOWER	1.81
33	90001072	ALL	TOLERANCE SPACER	N.L.A.
34	90001037	ALL	SPRING	1.12
35	90001051	ALL	RECOVERY TANK RELEASE HANDLE	2.59
36	21447003	ALL	SCREW	.57
37	90001283	F6212-900	LID COVER - SOLUTION TANK	11.33
	37274078	F6215-900	LID COVER - SOLUTION TANK	15.87
	37274111	F6207-900	LID COVER - SOLUTION TANK	8.93
38	36433193	ALL	TOOL CADDY	14.07
39	91001008	ALL	CLEANING TOOL HOSE	29.47
40	38613040	ALL	NOZZLE BODY WITH BRUSH	9.30
41	90001284	F6212-900	SOLUTION TANK ASSEMBLY	28.34
	90001091	F6215-900	SOLUTION TANK ASSEMBLY - LAVENDER	28.34
	38777104	F6207-900	SOLUTION TANK ASSEMBLY - FROST	28.34
	90001259	ALL	SPRING VALVE	.57
	90001260	ALL	VALVE SEAL	.74
	90001261	ALL	VALVE STEM	.85
42	25411015	ALL	HOSE CLAMP	1.12
43	90001075	ALL	TUBING	1.12
44	90001073	ALL	RESERVOIR - WELDED	11.33
45	90001076	ALL	TUBING	N.L.A.
46	90001103	ALL	O-RING HOSE END	.74
47	39442048	F6212-900, F6215-900	CORD WRAP - MAGNESIUM GRAY	1.14
	91001153	F6207-900	CORD WRAP	1.12

MODEL NO.

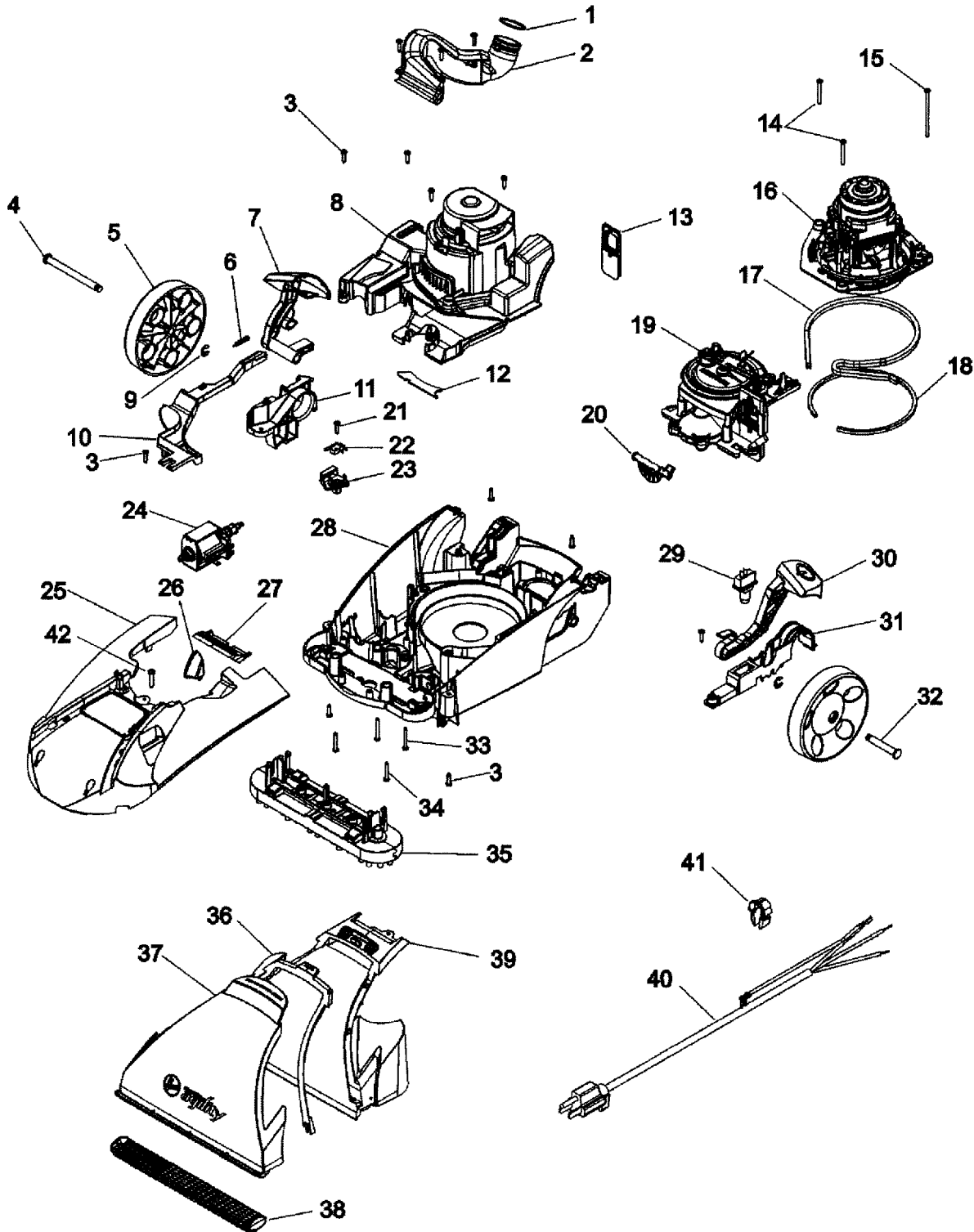
F6207-900  
F6212-900  
F6215-900



# SteamVac™ agility™

15

## ASSEMBLY SCHEMATIC



### MODEL NO.

F6207-900  
F6212-900  
F6215-900



**SteamVac™**  
**agility™**

15

PART LISTING / PRICE LIST

MODEL No.

F6207-900  
F6212-900  
F6215-900

ITEM	PART NUMBER	MODELS TO FIT	PART DESCRIPTION	LIST COST
1	90001103	ALL	O-RING HOSE ENDS	.74
2	90001104	ALL	RECOVERY DUCT	4.53
	21447242	ALL	SCREW - SELF TAPPING	1.12
3	21447003	ALL	SCREW	.57
4	90001107	ALL	REAR WHEEL AXLE - RIGHT	1.69
5	90001065	ALL	REAR WHEEL	2.26
6	38331006	ALL	SPRING - TURBINE	1.12
7	90001064	ALL	HANDLE RELEASE PEDAL	4.53
8	90001061	ALL	MOTOR COVER	12.23
9	160017--	ALL	LOCK RING	.58
10	90001060	ALL	ACTUATOR ARM - TURBINE	4.53
11	90001067	ALL	TRUNNION COVER - RIGHT	2.26
12	90001111	ALL	MOTOR COVER SEAL	.57
13	43613018	ALL	FILTER AND SCREEN ASSEMBLY	4.19
14	21447232	ALL	SCREW - SELF TAPPING	.57
15	21447246	ALL	SCREW - 3.125"	1.12
16	43576197	F6212-900, F6215-900	MOTOR ASSEMBLY	80.99
	27212074	F6207-900	MOTOR ASSEMBLY	56.39
17	38781048	ALL	MOTOR BASE SEAL	2.59
18	34113004	ALL	MOTOR SEAL	1.12
19	91001002	ALL	TURBINE AND GEAR ASSEMBLY	39.68
	91001075	ALL	BEARING - TURBINE	1.69
20	90001068	ALL	VALVE DOOR	2.26
21	21447003	ALL	SCREW	.57
22	90001112	ALL	SWITCH	3.96
23	90001062	ALL	SWITCH BRACKET	1.12
24	90001105	ALL	PUMP ASSEMBLY	26.64
25	90001035	F6212-900	HOOD ASSEMBLY - SURF BLUE	31.71
	90001085	F6215-900	HOOD ASSEMBLY - LAVENDER MIST	29.47
	37271144	F6207-900	HOOD ASSEMBLY - GRAY	14.73
26	38421114	ALL	INDICATOR KNOB	.53
27	90001059	ALL	SEAL RECOVERY DUCT	4.29
28	90001036	ALL	MAIN BODY ASSEMBLY	31.74
29	28218061	ALL	SWITCH	2.80
30	90001063	ALL	SWITCH ACTUATION PEDAL	4.53
31	90001066	ALL	TRUNNION COVER - LEFT	2.26



SteamVac™  
*agility*™

15

PART LISTING / PRICE LIST

MODEL No.

F6207-900  
F6212-900  
F6215-900

ITEM	PART NUMBER	MODELS TO FIT	PART DESCRIPTION	LIST COST
32	90001108	ALL	REAR WHEEL AXLE - LEFT	1.13
33	21479438	ALL	SCREW	1.12
34	21447236	ALL	SCREW	1.12
35	48437029	ALL	BRUSH BLOCK - 5 BRUSH	26.07
36	90001058	ALL	NOZZLE SEAL	6.79
37	37275069	F6212-900, F6215-900	FRONT PLATE - NOZZLE - CLEAR	20.02
	37275063	F6207-900	FRONT PLATE - NOZZLE - CLEAR	11.33
38	91001007	ALL	BARE FLOOR TOOL - FOAM	7.48
39	90001057	F6212-900, F6215-900	BACK PLATE - NOZZLE	20.40
	37275064	F6207-900	BACK PLATE - NOZZLE	14.16
40	90001109	ALL	POWER CORD	17.00
41	90001281	ALL	CORD RETAINER	.85
	27479307	ALL	CABLE TIE	.45